

Olang Valdaora

KRONPLATZ
PLAN DE CORONES



*Winter &
Weekly programme*



CONTENT

Ski paradise in the Dolomites	5	Winter Highlight	17
Hiking tours and sledding	6	SÜDTIROL GUEST PASS	20
The most beautiful winter hikes	9	Winterhighlights	22
Lakes	10	Events	24
Snowshoeing and ski touring	11	General information	26
Alpine guides	13	Information from A-Z	31
Cross country skiing	14	Christmas Marktes in South Tyrol	32
Ice skating & dolomites.light.zoo	15	Preview summer	34
Olang, village for families	16	Guestnet	35



Welcome!

DO YOU FEEL LIKE ...

... Winter holidays, exclusive **skiing fun, adventure** and **relax** for young and old? Then our **family-friendly village Olang**, the number one for active holiday in South Tyrol, is the right place for you!

Enjoy Kronplatz, **best ski area in the Alps**, with its **120 kilometres of slopes**, pleasant **snowshoe hikes** through the **magnificent landscape** of the **Dolomites (UNESCO World Heritage)**, rapid **toboggan rides**, the funny **Kids-Area-Panorama** or simply a good meal based on traditional or international dishes in front of an open fire of the cosy, typical huts...

Olang offers everything you could possibly desire for a perfect winter holiday!

Being active with your own, having a wonderful winter together: Olang is a **paradise for everybody who looks for adventure and relax** in the heart of the fantastic South Tyrolean mountain landscape.

OLANG,
number one for active holiday
in South Tyrol





SKI PARADISE IN THE DOLOMITES

The access to the **ski area Kronplatz** is very comfortable from Olang. In winter the **BEST SKI RESORT 2018**, the Kronplatz ski area, takes centre stage.

Ski guests of Olang can use the **ski bus** to reach every 20 minutes the ski lift facilities. The cable car goes directly up to the top of the Kronplatz on 2.275 m, where you can enjoy a **beautiful panorama**. Over **119 kilometers of slopes** promise an unforgettable ski holiday.

As part of the **Dolomiti Superski area** all lift facilities of the Kronplatz can be used with one ski pass. At the same time having the Dolomiti

Superski-pass the facilities of the surrounded areas are also included. For example the **ski area Three Peaks** or the round tour **Sellaronda**.

The **Kronplatz** and the **Erta slope** will again be dominated by the **Audi FIS Ski World Cup in 2023 (24.01.2023)**. After the very successful races in the last few years, the international ski federation decided to award another **women's world cup race** to the Kronplatz.

Find out more about the Kronplatz on the following Website:
www.kronplatz.com

Where Winter-Fairy-Tales come true ...



HIKING TOURS AND SLEDDING

HUT PATH

→ Fire station Geiselsberg

1) Niederegger hut

↔ 0,9 km - ⌚ 25 minutes - ⬆ 100 m

2) Niederegger hut – Oberegger hut

↔ 1 km - ⌚ 30 minutes - ⬆ 90 m

3) Oberegger hut – Lorenzi hut

↔ 1,1 km - ⌚ 30 minutes - ⬆ 110 m

GASTHOF BAD BERGFALL – MARCHNERHÜTTE – OBEREGER ALM

→ Parking area Kronplatz Gassl

⌚ 3½ h

⬆ 550 m

✗ Gasthof Bad Bergfall, Marchnerhütte,
Obereggeralm

You start from the parking area in direction Gasthof Bad Bergfall and follow the path nr. 4 until you cross the street (Furkelstraße). Then you go down the street until the lift Marchner and directly behind the lift starts the path 4a to the Oberegger Alm.

FROM THE ANGERERALM TO THE LANZWIESENALM

→ Parking area Lipper Saw, Oberolang


⌚ 2½ h

⬆ 700 m

✗ NO possibility of tavern


You follow the waymark 6a, first you arrive to the Angereralm and if you go on the path 6a you attain to the Lanzwiesenalm. Alternative possibility to return: forest road nr. 7.

SLEDGE RUN BRUNSTALM

- Parking area Lipper Saw, Oberolang
-  2½ h
- ↕ 700 m
- ✕ NO possibility of tavern


Frist you follow the waymark 20, then you go on right on the way 20b.

STEINZGER ALM

- Parking area Centre of Biathlon at the Lake of Antholz
-  50 minutes
- ↕ 250 m
- ✕ Steinzger Alm


Take the street till the end of the lake, and then follow the sledge run on your right and you will arrive at the alpine refuge.

STALLER SATTEL

- Parking area Centre of Biathlon at the Lake of Antholz
-  1½ h
- ↕ 400 m
- ✕ Berggasthof Obersee


Take the street till the end of the lake, and then follow the sledge run on your left.

HOFSTATT ALM

- Walderhöfe (farm) at Antholz Niedertal
-  30 minutes
- ↕ 250 m
- ✕ Hofstatt Alm


If you follow the beautiful winter path you will arrive in 30 minutes at the Hofstatt Alm.

LERCHERALM

- Oberwielenbach
-  1 h
- ↕ 300 m
- ✕ Lercheralm


Follow the sledge run till the hut on path nr. 1.

HAIDENBERG

- Stefansdorf, St. Lorenzen
-  1 h
- ↕ 250 m
- ✕ Gasthof Haidenberg


You start from the parking area and go on the asphalt street nr. 4 to the alpine restaurant Haidenberg.

PERTINGER ALM

- Parking area Pertingeralm at Terenten
-  1 h
- ↕ 280 m
- ✕ Pertinger Alm

Follow the sledge run through the forest nr. 5 and at 1.850 m a.s.l. you find the alpine refuge Pertinger Alm.

TAISTNER ALM

- Mudlerhof (Alpine refuge) at Taisten
-  1½ h
- ↕ 400 m
- ✕ Taistner Alm

The sledge run starts from the parking area with the number 38A. (on request possible to toboggan at night).

ASCHTALM

- Talschlusshütte St. Magdalena, Gsiesertal
-  1 h
- ↕ 400 m
- ✕ Aschtalm, Talschlusshütte Gsies

Follow the waymark 10 in direction Aschtalm. Going parallel to the ski lift you cross the street and follow the signs into the wood until you reach the alpine refuge.

KRADORFERALM

- Talschlusshütte St. Magdalena, Gsiesertal
-  1 h
- ↕ 450 m
- ✕ Kradorferalm

At the end of the Valley Gsiesertal you go straight ahead on into the Valley Pidig, follow

the signs of path nr. 49. After one hour you reach the Kradorferalm.

UWALDALM

→ Talschlusshütte St. Magdalena, Gsiesertal

🕒 1¾ h

⬆️ 600 m

✂️ Uwaldalm

Starting at the end of the Valley on the right sight you follow the signs of path nr. 12.

WINTER HIKE TO THE PLÄTZWIESE

→ Brücke/Pragsertal

🕒 2 h

⬆️ 500 m

✂️ Alpengasthof Plätzwiese, Dürrensteinhütte

Starting at Brücke you have to use the path nr. 37. Through the wood you sometimes have to cross the street but going on the waymark 37 you reach directly the Alpengasthof Plätzwiese.

WINTER HIKE TO THE NEMESALM

→ Kreuzbergpass/Passo Croci near Sexten

🕒 45 minutes

⬆️ 230 m

✂️ Nemesalm, Coltrondohütte

Use the path nr. 131 from the parking area at the Kreuzbergpass until you reach the Nemesalm. From there you use the path 156 until you come to the Coltrondohütte. Back to the starting point on the path nr. 149.

DREISCHUSTERHÜTTE

→ Parking area at the beginning of the Innerfeldtal/Val Campo di Dentro in direction Sexten

🕒 1½ h

⬆️ 280 m

✂️ Dreischusterhütte

From the parking area you see the signs in direction Dreischusterhütte. Follow the way about 5 beautiful kilometers and you reach the alpine refuge.

WINTER IN THE FANES DOLOMITES

→ Parking area at the Berggasthof Pederü/St. Vigil

🕒 3 h

⬆️ 700 m

✂️ Faneshütte, Lavarella Hütte, Berggasthof Pederü

Use the sledding run to climb up to the Faneshütte. If you want you can reach within 20 minutes the little lakes Limo.

SLEDDING RUN ROTWAND

→ parking area Rotwand in Sexten

✂️ Rotwandwiesenhütte

SLEDDING RUN HAUNOLD

→ Cable car Haunold/Baranci in Innichen

✂️ Haunold Hütte

TOBOGGAN AT WEISSENBACH IN THE TAUFRER VALLEY

→ Weißenbach in the Ahrntal

🕒 1½ h

⬆️ 433 m

✂️ Pircheralm, Marxeggeralm, Innerhoferalm

You start from the sports area at the end of the village. After 50 minutes by foot you arrive at the Innerhofer Alm (1.743 m), you go on and after 20 minutes you achieve to the Marxegger Alm (1.761 m) and last but not least you can visit the Pircher Alm (1.810 m).

KNUTTENALM

→ Parking area Rein in Taufers

🕒 1 h

✂️ Knuttenalm

Follow the path nr. 9 through the beautiful winter landscape.



THE MOST BEAUTIFUL WINTER HIKES

SEEFELDER

→ Cemetery Oberolang

🕒 ½ h - ↔ 1,7 km

OBEROLANG – WELSBERG

→ Cemetery Oberolang – Welsberg

🕒 1 ½ h - ↔ 5,6 km - ↑ 60 m - ↓ 80 m

SALLA

→ Oberolang

🕒 1 ¼ h - ↔ 3,8 km - ↑ 270 m - ↓ 100 m

LOOP OBEROLANG

→ Pavilion

🕒 ¾ h - ↔ 2,4 km - ↑ 70 m - ↓ 90 m

MILL PATH

→ Restaurant Panorama

🕒 25 minutes - ↔ 1,5 km - ↑ 30 m - ↓ 10 m

GASSL

→ Voppichl/Oberolang

🕒 25 minutes - ↔ 1 km - ↑ 40 m

PANORAMA PATH

→ Restaurant Panorama

🕒 1 h - ↔ 2,8 km - ↑ 20 m - ↓ 80 m

STONE TRAIL

→ Niederolang playground

🕒 25 minutes - ↔ 1 km - ↑ 40 m

HUT PATH

→ Fire station Geiselsberg

1) Niederegger hut

↔ 0,9 km - 🕒 25 minutes - ⬆️ 100 m

2) Niederegger hut – Oberegger hut

↔ 1 km - 🕒 30 minutes - ⬆️ 90 m

3) Oberegger hut – Lorenzi hut

↔ 1,1 km - 🕒 30 minutes - ⬆️ 110 m

PRACKENDORF

→ Hotel Hubertus

🕒 1 ¾ h - ↔ 4,5 km - ⬆️ 530 m

LAKES

WINTER HIKE AROUND THE LAKE ANTHOLZER SEE

→ Biathlon Centre in Antholz

🕒 1 h

✂ Huberalm, Restaurant Biathlon Inn,
Restaurant Platzl am See

Use the path around the lake.

WINTER HIKE AROUND THE LAKE TOBLACHER SEE

→ Parking area Toblacher See

🕒 1½ h

✂ Camping Toblacher See

Use the path around the lake.

WINTER HIKE AROUND THE LAKE PRAGSER WILDSEE

→ Gasthof Pragser Wildsee

🕒 1 h

✂ Gasthof Pragser Wildsee

Use the path around the lake.





SNOWSHOEING & SKI TOURING

BAD BERGFALL – KRONPLATZ

- 🕒 3 h
- ↔ 3,1 km
- ↑ 250 m
- ↓ 50 m
- 32, 3, 4A

ROUND PATH ANGERER HUT

- Restaurant Panorama
- 🕒 2¾ h
- ↔ 6 km
- ↑ 310 m
- ↓ 310 m

DEUTSCHWEG

- Voppichl/Oberolang
- 🕒 2½ h
- ↔ 5 km
- ↕ 650 m
- 7

BRUNST

- Restaurant Panorama
- 🕒 3½ h
- ↔ 6,7 km
- ↕ 770 m

SNOWSHOEING TO THE MOUNTAIN STRUDELKOPF (2307 M)

- Plätzwiese/Prags
- 🕒 2 h
- ↕ 315 m
- ✕ Alpine refuge Plätzwiese, Dürrensteinhütte

First you go to the alpine refuge Plätzwiese, and then you go to the Dürrensteinhütte. On the left side starts the path 34 which goes to the Strudelkopf.



SNOWSHOEING TO THE MOUNTAIN SAMBOCK (2396 M)

→ Gasthaus Kofler am Kofl in Pfalzen

 2 h

 909 m

✕ Gasthaus Kofler am Kofl

Follow the waymark 66 and you will arrive on the top.

FROM THE MOUNTAIN LUTTERKOPF (2145 M) TO THE MOUNTAIN DURRAKOPF (2275 M)

→ Gasthaus Mudler/Taisten

 4½ h


 730 m


✕ Taistner Vorderalm, Mudlerhof

First of all you follow the street in direction Lutterkopf. After 500 m you will see the path 31 which leads you to the Lutterkopf. From the top you will just see the top of the Durrakopf and you go straight ahead on the same path. You return to the mountain hut Taistner Vorderalm and from there you can sledge back to the parking area.

HOCHNALL (2217 M)

→ Parking area at Platten/Oberwielenbach, Percha

 2½–3 h

 880 m

✕ Pyramidencafé

You follow the path in direction of the Earth Pyramids. After 20 minutes you turn left on the path 16A, you will arrive at the Gönneralm and you follow the traces near the fence till the top.



Lawinen.report

The **AVALANCHE FORECAST** includes South Tyrol, Tyrol and Trentino.

<https://avalanche.report>





ALPINE GUIDES

Olang is located in the middle of the Dolomites and offers a huge possibility of different hiking tours. Together with our mountain guides you can explore hidden sides of the mountains and also in winter our guides show you the beautiful nature that surrounds Olang.



MANUEL BAUMGARTNER

Alpine Guide
P +39 347 931 96 78
info@dolotool.com
www.dolotool.com

"I had the pleasure to grow up in an area like ours within the nicest mountains all over the world. Doing a lot of hiking tours in South Tyrol and out of our borders I found my passion for the mountains.

I would be glad to accompany you as an alpine guide and show you the mountains from another perspective."



TONI OBOJES

Alpine Guide
P +39 348 826 62 10
toni@obojes.it
www.friends-of-dolomites.com

"Already at the age of 6 I climbed Mount Paterno in the Dolomites of Sesto. Once I've learned how to be Alpine Guide, nothing could stop me and together with friends I headed on adventures in the Dolomites, the entire Alpine arch and later on also in different mountains of our planet.

Throughout the years, I was able to gain a lot of experiences, which I am now happy to pass on to all of you."



CROSS COUNTRY SKIING

ANTHOLZER VALLEY BIATHLON CENTRE

You can find more than 42 kilometers of cross country tracks in the Antholzer Valley.

We recommend:

SLOPE "VALLEY" OBERRASEN / BAD SALOMONSBRUNN

- Parking area in the town centre of Oberrasen
- ↔ 5,4 km
- ⊙ Bad Salomonsbrunn/Antholz Niedertal (possibility of tavern)

CIRCUIT „BÄRENLOIPE“ IN THE BIATHLON CENTRE

- Biathlon Centre
- ↔ 4,7 km
- ✕ Alpine refuge Huberalm, BiathlonInn

Visit the Biathlon Centre of Antholz if you are looking for easy and hard slopes. You will find tracks for each level of difficulty. Use one of the rentals in the Biathlon Centre if you need the best equipment and start directly on the tracks. Who knows maybe you meet a famous athlete?

CROSS COUNTRY PARADISE IN THE GSIESERTAL VALLEY

On the sunny tracks of the Gsiesertal Valley you can enjoy about 42 kilometers of best prepared slopes. Starting at the end of the valley in the town S. Maddalena you can skate until the town Welsberg, where you can reach the continuing tracks to Dobbiaco.

“NORDIC ARENA” – CROSS COUNTRY CENTRE IN TOBLACH

As destination of different international races the cross country centre in Toblach is famous also outside the borders of South Tyrol. Over 120 km of tracks were daily prepared and offer the best conditions for cross country ski lovers. Enjoy the impressive tracks within the UNESCO World Heritage



ICE SKATING

At the **Kids Area Panorama** in Oberolang you will find a big ice rink with the possibility to play hockey or just skate on the ice.

Opening hours: 10 a.m. – 10 p.m.

Ice skate rent: directly on site

OTHER ICE RINKS:

- Gassl ice rink
- Ice rink Niederolang

ICE RINKS OUT OF OLANG WITH ARTIFICIAL ICE

- Artificial ice rink Parco Prenniger in Welsberg
- Intercable Arena Bruneck
(not always open for public)

DOLOMITES. LIGHT.ZOO

12 Corten steles, realized by local craftsmen, in the shape of the mountain peaks of our Dolomites create an **interactive course** and make the **wildlife of the Fanes-Sennes-Braies Nature Park** come alive in a very special way.

A foray through the animal world of the **Fanes-Sennes-Prags Nature Park** for young and old.

***Join in!** Find the solution word and receive a small gift at the Tourist Office Olang.*

Crossword puzzle available at the Tourist Office Olang.





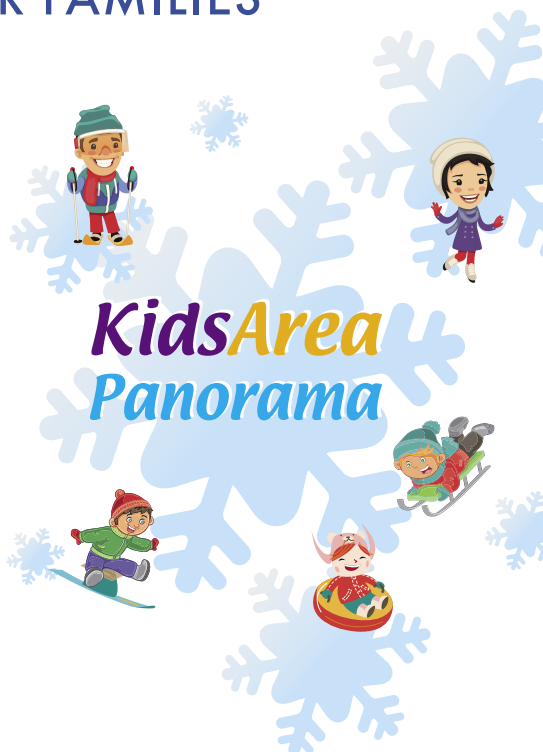
OLANG, VILLAGE FOR FAMILIES

In the wintertime fun in the snow is the order of the day. At the edge of the woods, between Mitterolang und Niederolang, are found three Magic Carpets: this is the **Kids Area Panorama** where a children's ski slope, a sledding slope, and an inner tubing fun course offer abundant possibilities for gliding, sliding, and whizzing down the hill.

In addition to the sport on the snow you can use one of our **ice rinks** in Oberolang und Niederolang. If you prefer doing something else than sport activities you could do an **easy family hike** through the **panoramic points** of Olang.

Take part also of our weekly winter program which is offered with the SÜDTIROL GUEST PASS. Do you prefer a horse drawn carriage ride or a torchlight hike?

Bookable online at www.olang.com or directly at the Tourist Info Olang.



WEEKLY WINTER PROGRAM



Family winter hike



Horse drawn carriage ride



Torchlight hike



Snow tubing by night



Cross-country ski trial course



WINTER HIGHLIGHTS

KIDS & FAMILY

BOULDER HALL

Bahnhofstraße 14, Mitterolang

Key:

Tourist Info P +39 0474 496 277

CRONIWORLD

Kids entertainment on the top of Kronplatz

P +39 0474 592 091

www.kronschool.com

RIDING FARM THARERWIRT

Brechelweg 6, Mitterolang

P +39 348 473 14 92

www.tharerwirt.com

RIDING FARM TOLDERHOF

Wiesenweg 15, Oberolang

P +39 0474 498 451

P +39 342 068 68 93

www.hotelpost-tolderhof.com

TUBING PARK - KIDS AREA PANORAMA

Rodelbahnweg 3, Oberolang

P +39 345 538 39 30

www.kronschool.com

WILD PARK GUSTAV MAHLER

Gustav Mahler Stube3 / Altschluderbach,
Toblach

P +39 0474 972 347

www.gustavmahlerstube.com

ACTION & ADVENTURE

BIATHLON

Shoot with a small bore rifle

Obertalerstraße 33, Rasen Antholz

P +39 0474 492 446

www.langlauf-antholz.it/biathlon

CABLE CAR OLANG

Kronplatz - Gassl 23, Geiselsberg

P +39 0474 592 035

CLIMBING CENTRE BRUNECK

Josef Ferrari Straße 36, Bruneck

P +39 0474 055 005

www.kletterzentrum-bruneck.it

CRON4

Indoor swimmingpool & sauna

Im Gelände 26, Reischach

P +39 0474 410 473

www.cron4.it

ISSINGER WEIHER (LAKE)

Ice rink

Weiherplatz 2, Issing

P +39 0474 565 684

www.issingerweiher.it

TANDEMFLIGHTS

Tandemflights Kronplatz

P +39 348 709 49 15

www.tandemflights-kronplatz.com

Kronfly Tandem Headquarter

P +39 340 006 93 99

www.kronfly.it

CULTURE & SIGHTSEEING

CASTLE TAUFERS

Burg-Taufers-Weg 4, Sand in Taufers

P +39 0474 678 053

www.burgeninstitut.com

CHEESE FACTORY DREI ZINNEN

Pustertaler Straße 3c, Toblach

P +39 0474 971 300

www.3zinnen.it

DOLOMYTHOS

Museum of Dolomites

Rainerstraße 11, Innichen

P +39 0474 913 462

www.dolomythos.com

HERBS FARM BERGILA

Weiher Platz 8, Issing

P +39 0474 565 373

www.bergila.com

HERBS FARM HAUSER

Wielenberg 20, Percha

P +39 0474 401 092

www.kraeuterhof.it

LUMEN

Museum of mountain photography

Top of Kronplatz

www.lumenmuseum.it

MARANATHA

Museum of popular art and crips

Weißbachstraße 17, Luttach

P +39 0474 671 682

www.krippenmuseum.com

MMM CORONES

*Museum dedicated to
traditional mountaineering*

Top of Kronplatz

P +39 0474 551 500

www.messner-mountain-museum.it

MMM RIPA BRUNECK

Mountain people

Schlossweg 2, Bruneck

P +39 0474 410 220

www.messner-mountain-museum.it

MUSEUM LADIN: ĆIASTEL DE TOR

Ladins museum

Strada Tor 65, St. Martin in Thurn

P +39 0474 524 020

www.museumladin.it

MUSEUM MANSIO SEBATUM

Museum of roman habitation

J. Renzler Straße 9, St. Lorenzen

P +39 0474 474 092

www.mansio-sebatum.it

MUSEUM OF MINERALS KIRCHLER

St. Johann 3, Ahrntal

P +39 0474 652 145

www.mineralienmuseum.com

www.museo-mineralogico.it

PLÄTZWIESE / PRATO PIAZZA

High Plateau

Until 10.00 a.m. possible going up by car –
then by shuttle

SALT CAVE BRIXEN

Plosestraße 10C, Brixen

P +39 0472 672 070

www.salzgrottebrixen.net

STONE TRAIL

Stones from Südtirol

Erlenweg, Niederolang

P +39 0474 496 277

www.olang.com

SULFUR BATH BAD BERGFALL

Bad Bergfallweg 5, Geiselsberg

P +39 0474 592 084

www.badbergfall.com





SÜDTIROL GUEST PASS

If you book your holiday in a member exercise of the Tourist Info Olang you will get the SÜDTIROL GUEST PASS. Ask your accommodation for the membership of the Tourist Info Olang and get the guest card with several benefits for free at arrival.

With the SÜDTIROL GUEST PASS **all the public transport in South Tyrol** is included (public buses, city buses, regional trains, as well as the following cablecars: Meransen, Jenesien, Ritten, Mendel and the Ritten train).

WITH THE SÜDTIROL GUEST PASS YOU HAVE THE FOLLOWING INCLUDED REDUCTIONS:

free

Free use of the ski busses and all the public transport in South Tyrol

Reduction on magic carpet
(Kids Area Panorama)

free Free WIFI at the Tourist Info Olang

free Ice rink in the Kids Area & ice skates rental

-20% reduction on the entry of the museum Mansio Sebaturm (St. Lorenzen)

-10% reduction on the entry of the minerals museum of Ahrntal Valley

-10% reduction for tandem flights with paraglider "Tandemflights" and "Kronfly" at Kronplatz

TERMS AND CONDITIONS SÜDTIROL GUEST PASS:

- Name and surname and the length of stay has to be written on the guest card.
- The guest card may not be transferred and is non-cumulative.
- The guest card is valid for 7 days after first validation. Guests who are staying longer than seven days will receive a second card.
- The guest card has to be validated on every bus ride or before entering any train.
- Exempt from the SÜDTIROL GUEST PASS is the use of long-distance trains (Intercity, Eurocity, Euronight, Eurostar)
- the transportation of bicycles, dogs and other pets (needs an appropriate ticket)
- Nightliner

Timetable information: www.sii.bz.it

WEEKLY PROGRAM WINTER 2022/2023



		TIME	WHITOUT	WITH
DAILY ON REQUEST	20.12.2022 - 19.03.2023 Ski lessons for children and beginners Meeting point: Kids Area Panorama, Oberolang	1.30 p.m. - 3 p.m.	€ 30,00	€ 30,00
MON	19.12.2022 - 20.03.2023 Torchlight hike* Meeting point: Tourist Info Olang	9 p.m. - 10.30 p.m.	€ 10,00 adults € 5,00 children	€ 0,00
TUE	20.12.2022 - 21.03.2023** Snowshoe hike included equipment* Meeting point: Skischool office Kron, Gassl	9.30 a.m. - 12 noon	€ 30,00	€ 0,00
TUE	Horse drawn carriage rides* Meeting point: Tourist Info Olang	06.12.2022 - 17.01.2023 2 p.m. - 4 p.m. 20 minutes each ride 24.01. - 21.03.2023 3 p.m. - 5 p.m. 20 minutes each ride	€ 10,00	€ 0,00
TUE	06.12.2022 - 21.03.2023** Trial lesson with the E-Fatbike* Meeting point: Tourist Info Olang	3 p.m. - 5 p.m.	€ 20,00	€ 10,00
WED	14.12.2022 - 15.03.2023** Guided ski-tour (alpine ski-touring)* Meeting point: Tourist Info Olang	8.30 a.m. - 4 p.m.	€ 100,00 without equipment	€ 80,00
WED	21.12.2022 - 15.03.2023** Snow Tubing by night Meeting point: Kids Area Panorama, Oberolang	5 p.m. - 7 p.m.	€ 0,00	€ 0,00
THU	08.12.2022 - 13.04.2023** Snowshoe hike in the Antholzertal and surrounding* Meeting point: Tourist Info Niederrasen	9 a.m. - 4 p.m.	€ 30,00	€ 15,00
HIGHLIGHT FRI	16.12.2022 - 10.03.2023** (cancelled on 30.12.2022 & 06.01.2023) Guided Ski-Safari Sellaronda* Meeting point: Tourist Info Olang	8 a.m. - 4 p.m.	€ 60,00 + costs of the sci pass	€ 40,00
SUN	08.01. - 19.03.2023 (cancelled on 22.01.2023) Cross-country ski trial course (classic) Meeting point: Biathlon Centre Antholz Obertal	2.30 p.m. - 3.30 p.m.	Exclusive with SÜDTIROL GUEST PASS	€ 0,00

* registration necessary in the Tourist Office Olang

** the period can vary according to snow situation

CANCELLATION: We kindly ask you to cancel at least 24 hours before the start of the event.

For cancellations after this time, € 5,00 will be charged as cancellation penalty.

WINTERHIGHLIGHTS



ADVENTURE DAY AT MISURINA - MONTE PIANA

With the mountain guide Manuel you drive into the Höhlensteintal until you arrive at the parking area before the Lake of Misurina.

By snowmobile you ride above to the Alpine hut Rifugio Bosi. From there you start with the snowshoes to the Monte Piana to reach the Open Air Museum of the First World War. After our historic circuit hike you return to the Rifugio Bosi.

It expect you the 5 km long sledging run slope among the UNESCO World Heritage with a stunning view to the most popular peaks of the

Dolomites, like the Drei Zinnen of Lavaredo, Monte Cristallo, the Tofana peaks and many others.

**A spectacular adventure
for the whole family!**

(for children aged 8 years and older)

*Individual tours bookable directly with Manuel:
P +39 347 931 96 78*

**Information under
www.olang.com/top-4**



GUIDED SKI SAFARI SELLARONDA

Our ski instructors will show you the probably most beautiful and impressive ski circuit in South Tyrol, the Sellaronda. We will take the shuttle to Corvara in Val Badia, the starting point of our eventful day.

On skis we will circle the whole Sella massif and explore the Dolomites UNESCO World Heritage in its full winter splendour.

We will immerse ourselves in the breathtaking winter landscape in the middle of pointed rocky peaks and on our way, we will cross 4 different valleys: Val Gardena, Alta Badia, Arabba and Fassa.

After numerous ascents with various lifts and 26 km of spectacular descents with a magnificent view to the most famous Dolomite peaks, we will return to Corvara.

Information under
www.olang.com/top-4

EVENTS

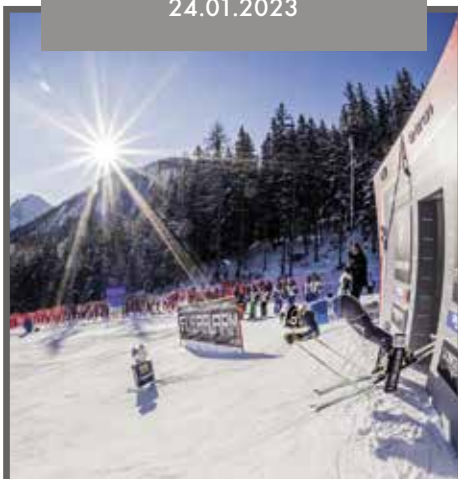
19.–22.01.2023



IBU BIATHLON WORLD CHAMPIONSHIPS 2022

www.biathlon-antholz.it

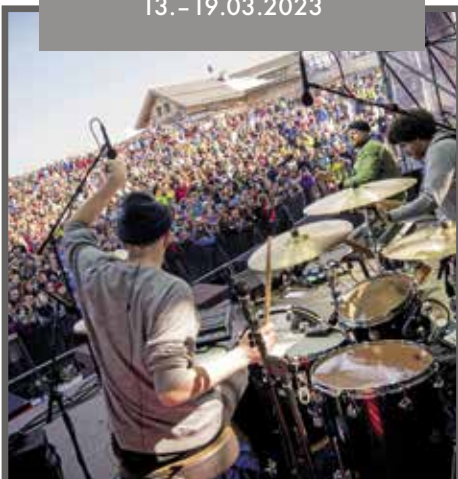
24.01.2023



AUDI FIS SKI WORLD CUP KRONPLATZ

www.skiworldcup-kronplatz.com

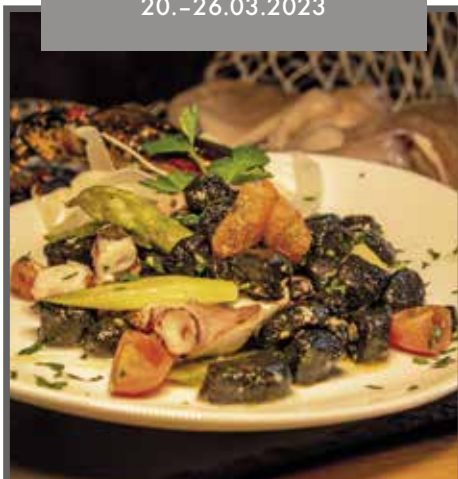
13.–19.03.2023



SKI & MUSIC

www.skimusic.org

20.–26.03.2023



SENSATION WEEK



NIGHT EVENTS

Tuesday

NIGHT SLEDDING

in the Ski Area Klausberg
in the Ahrntal Valley

from 7.30– 10.30 p.m.

Tuesday & Saturday

NIGHT SKIING

and MOONLIGHT SLEDDING

on the slope „Korer“ in Reischach

from 7.30– 10.00 p.m.

Tuesday & Thursday

NIGHT SKIING

and MOONLIGHT SLEDDING

on the slope “Cianross”, St. Vigil

from 8.00– 10.00 p.m.

Wednesday

SNOWTUBING BY NIGHT

in the Kids Area Panorama, Oberolang

from 5.00– 7.00 p.m.

Tuesday & Friday

NIGHT SKIING

on the slope “Haunold/Baranci”, Innichen

from 7.00– 10.00 p.m.

Friday

NIGHT SKIING

Skilift Guggenberg, Taisten

from 7.30– 10.00 p.m.



GENERAL INFORMATION

RESTAURANTS

OBEROLANG

Jausenstation Oberriedl

Riedl 2

P +39 0474 498 088

day off: Wednesday

Restaurant Picknick

Dorfstraße 10

P +39 0474 497 322

Hotel Rainegg

Aue 14

P +39 0474 496 084

day off: Wednesday

MITTEROLANG

Restaurant Pizzeria Christl

Kerla Straße 1a

P +39 0474 498 212

day off: Monday

Minigrill Floriani

Peter Sigmayr Platz 8

P +39 0474 498 207

day off: Sunday

Pizzeria Friedheim Restaurant

Hans von Perthaler Straße 10

P +39 0474 831 091

day off: Thursday

GEISELSBERG

Gasthof Bad Bergfall

Bad Bergfall Straße 5
P +39 0474 592 084
day off: Wednesday

Restaurant Gassl

Valley station Gassl
P +39 0474 592 087

Lorenzi hut

Egger Weg 22
P +39 349 750 55 76

Niederegger hut

Egger Weg 18
P +39 0474 592 029

Oberegger hut

Egger Weg 21
P +39 347 522 01 22
open for lunch

Hotel Olanderhof

Prackenweg 27
P +39 0474 496 193
open for lunch

Berggasthof Trattes

Furkelstraße 24
P +39 0474 592 010
*Evening on reservation
day off: Tuesday*

BAR & COFFEE

OBEROLANG

Cafe Pub Pfiff

P +39 349 753 78 78

MITTEROLANG

Café Bistro Bacher

P +39 0474 496 699
day off: day off

Colli Lounge

P +39 0474 592 091

Bar Krempe

P +39 349 449 40 96
day off: Sunday

Cocktailbar Tolderclub

P +39 348 228 32 27

SHOPPING

PHARMACY

Apotheke Engel

Floriani Platz 8
P +39 0474 496 566

GROCERY STORE

Agstner Market Despar Specialities

Hans von Perthaler Straße 7
P +39 0474 496 511

Store Engl

Peter Sigmayr Platz 18
P +39 0474 496 228

Butcher Meatery

Floriani Platz 1
P +39 0474 496 216

Fruit market Niederegger

Peter Sigmayr Platz 9
P +39 0474 496 628

Butcher Pörnbacher

Hans von Perthaler Straße 12

P +39 0474 496 435

Bakery Trenker

Peter Sigmayr Platz 1

P +39 0474 497 324

SPORT- & CLOTHING STORE

Sport Corones

Floriani Platz 6

P +39 0474 496 660

Shoe store Mutschlechner

Peter Sigmayr Platz 1b

P +39 0474 498 333

Rent a Sport

Floriani Platz 15

P +39 0474 498 038

Sport Sagmeister

Krempe 1A

P +39 0474 496 535

Sport Fashion Schönhuber

Gassl 21A

P +39 0474 555 141

HAIRDRESSER

Salon b.you

Geiselsbergerstraße 7

P +39 347 074 37 32

Barber Toni

Rodelbahnweg 1b

P +39 366 361 33 32

OTHERS

Interiors Appenbichler

Dorfstraße 7

P +39 0474 498 361

Wood carver Bachmann

Floriani Platz 17

P +39 0474 498 448

Lerchnhof

Kerla Straße 3

P +39 339 142 02 43

Goldsmith M & E

Floriani Platz 15

P +39 0474 496 760

Tree nursery Obojes

Bahnhofstraße 6

P +39 0474 496 184

Weaving mill & Souvenir Pedevilla

Floriani Platz 15/F

P +39 340 621 36 37

Bank Raiffeisenkasse

Bahnhofstraße 2

P +39 0474 496 485

Bank Sparkasse

Peter Sigmayr Platz 2

P +39 0474 496 590

Cheese Dairy Unterhölzlhof

Greit Weg 2

P +39 0474 496 322



CAR REPAIR SHOP | TAXI

Taxi Holzer Josef

Rasen

P +39 348 727 95 09

Taxi NON STOP

Mitterolang

P +39 340 238 34 50

Auto Garage Sepp

Bahnhofstraße 25c

P +39 0474 496 097

Gas station Q8

Bahnhofstraße 7

P +39 0474 496 259



CHARGING STATIONS ELECTRIC CAR

parking area valley station
cable car Olang & parking area
alimentary shop Conad Mitterolang

CHARGING STATION E-BIKE

park of Mitterolang



SKI RENTAL

Cima

Floriani Platz 17

P +39 0474 497 190

Sport Corones

Floriani Platz 6A

P +39 0474 496 660

Kronschool

Kron Restaurant - Kronplatz Summit

Peter Sigmayr 13, Mitterolang

P +39 0474 592 091

Rent a Sport

Gassl 21

P +39 0474 592 111

Floriani Platz 15

P +39 0474 498 038

Skidepot - Skisalon

Gassl 23

P +39 0474 592 106





INFORMATION FROM A-Z

Dentist

Dr. Geier Joachim

St. Ägidius Weg 1, Mitterolang

P +39 0474 498 360

Emergency

P 112

General Doctor

Dr. Großrubatscher Florian

Feldweg 2, Niederolang

P +39 0474 496 525

P +39 344 261 63 01

Mon, Tue, Fri: 9 a.m. - 11 a.m.

Thu: 4 - 6 p.m.

General Doctor

Dr. Vieider Martin

Kanonikus-Gamper-Weg 14, Mitterolang

P +39 0474 496 550

P +39 347 236 24 67

Mon: 7.30 a.m. - 12 noon & 5 p.m. - 6.30 p.m.

Tue, Thu, Fri: 7.30 a.m. - 12 noon

Wed: 10 a.m. - 12 noon & 4 p.m. - 6.30 p.m.

Hospital

P +39 0474 581 111

Internet

Tourist Info Olang: WiFi & Ipad

for free with SÜDTIROL GUEST PASS

Library

Kanonikus-Gamper-Weg 5, Mitterolang

P +39 0474 497 112

Mon: 5 p.m. - 8 p.m.

Tue: 10 a.m. - 12 noon

Wed & Fri: 10 a.m. - 12 noon & 2.30 p.m. - 5.30 p.m.

Thu: 2.30 p.m. - 5.30 p.m.

Sat: 2.30 p.m. - 4.30 p.m.

Pet boarding facility

Salla Straße 6

P +39 0474 496 370

P +39 348 605 68 33

info@tierpension.it

Pharmacy Engel

Floriani Platz 8, Mitterolang

P +39 0474 496 566

Mon - Fri: 8 a.m. - 12 noon & 3 p.m. - 7 p.m.

Sat: 8.30 a.m. - 12 noon

Police / Carabinieri

Ave 30, Oberolang

P +39 0474 496 145

Post office

Kerlastraße 2c, Mitterolang

P +39 0474 496 113

Mon - Fri: 8.05 a.m. - 1.35 p.m.

Sat: 8.05 a.m. - 12.15 a.m.

Taxi Holzer Josef

Rasen

P +39 348 727 95 09

Taxi NON STOP

Mitterolang

P +39 340 238 34 50



CHRISTMAS MARKETS IN SOUTH TYROL

Olang is a central starting point to reach the surrounding **Christmas markets**. The markets of **Bruneck, Brixen, Toblach, Innichen** or **in the Valley of Antholzertal** invite each visitor to be part of a romantic and magic Advent.

Even better, with the SÜDTIROL GUEST PASS it is possible to reach every market with the means of public transportation for free.

CHRISTMAS MARKETS: 25.11.2022–06.01.2023

Take a look at all Christmas markets: www.olang.com/christmas





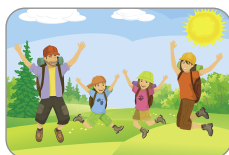
LIVE THE SUMMER IN OLANG

Relaxing activities or active once? Both are offered in **Olang in summer**. You can choose between an easy hike to the **alpine refuges of Olang** and more difficult hikes in the **mountains of the UNESCO World Heritage**.

Some activities you can do in summer:



Weekly program
(SÜDTIROL GUEST PASS)



Family hikes



Kids Area Panorama



Bike tours



Kids World Olang

HIGHLIGHT EVENTS



STREET FOOD FESTIVAL



WINELIFE



BEERLIFE



CULINARY TREATS

Olang Guestnet Valdaora



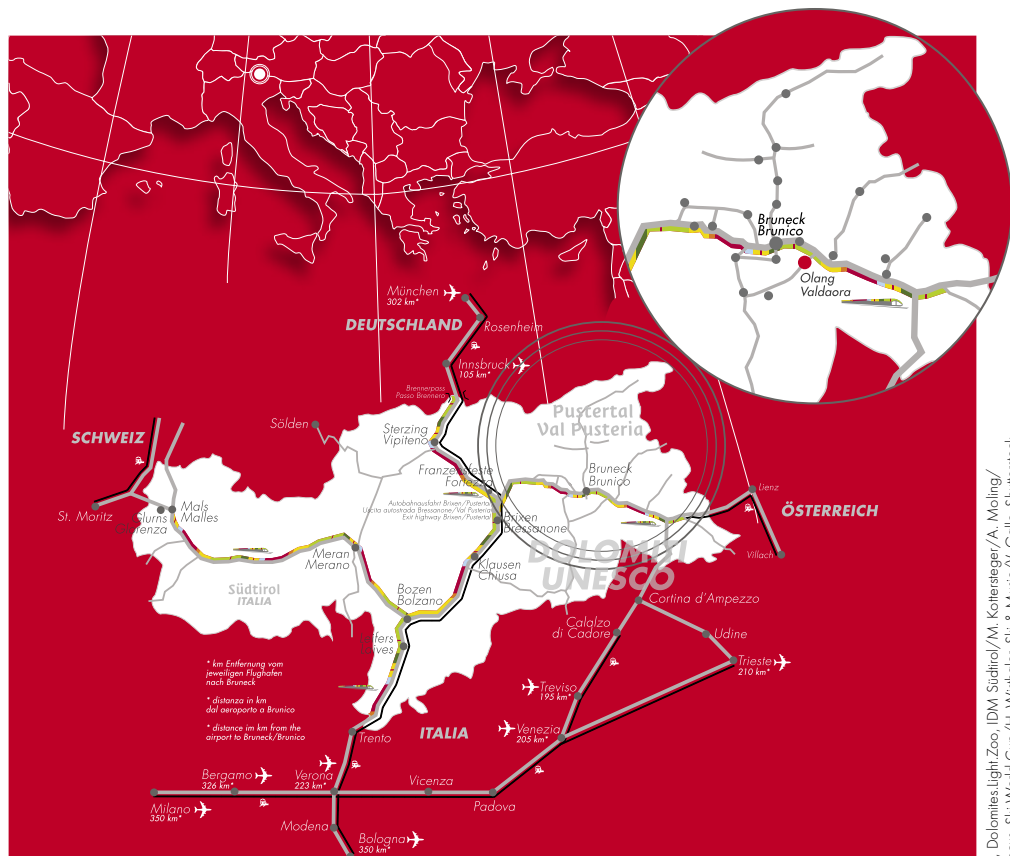
OLANG'S VIRTUAL TOURISM OFFICE

- › Events
- › Timetables
- › Activities
- › Weekly program
- › Weather
- › Webcams
- › Gastronomy ...

olang.guestnet.info

olang.
guestnet.
info





Kronplatz

PUSTERTAL PLAN DE CORONES

TOURIST INFO OLANG

Floriani Platz 19 | I-39030 Olang
P +39 0474 496 277 | info@olang.com

olang.com

kronplatz.com