

Olang Valdaora

KRONPLATZ
PLAN DE CORONES



*Hotels &
Accommodation*

Kronplatz

DOLOMITES PLAN DE CORONES



PREISE WINTER
PREZZI INVERNO
PRICES WINTER

2026/2027



WWW.KRONPLATZ.ORG





Urlaub am Fuße des Kronplatz!

Du musst bestimmt nicht lange suchen, bis die Natur dir ihre Schätze preisgibt. Kraft schöpfen aus dem imposanten Anblick der Dolomiten, Ruhe finden im satten Grün oder unbeschwert Wälder durchstreifen – ein Blick aus dem Fenster oder ein paar Schritte vor die Tür genügen, und schon wirst du tausendfach dafür belohnt. Jeder Moment ist einzigartig und doch eingebettet in ein großes Ganzes. Erlebe den Kreislauf befreit von den Problemen des Alltags.

Wer seinen Skiurlaub in Südtirol noch nie auf dem legendären Kronplatz verbracht hat, hat bisher einiges verpasst. Es muss aber nicht ausschließlich Skifahren sein. Olang mit seinen vielfältigen Unterkunftsmöglichkeiten bietet eine Reihe von attraktiven Aktivmöglichkeiten, die Ihren Urlaub zum unvergesslichen Erlebnis machen: Langlaufen, Sightseeing, Schneeschuh- und Winterwandern, Mondscheinrodeln, Eislaufen oder was immer im Winter das Herz begehrt. Oder wie wär's mit einem erholsamen Wellnessstag im Wohlfühlhotel Ihrer Wahl?

Vacanze ai piedi del Plan de Corones!

La natura ti invita a scoprire i suoi tesori più preziosi. Contemplare la vista sulle imponenti Dolomiti, ritrovare nuove forze in mezzo al verde o passeggiare in tutta tranquillità attraverso boschi ombreggiati - bastano pochi passi per raggiungere i luoghi più suggestivi del paesaggio alpino. Ogni attimo è unico, e al tempo stesso parte di un qualcosa di grande e di infinito. Lasciatevi alle spalle le tensioni e lo stress del quotidiano.

Chi non ha mai trascorso le vacanze invernali in Alto Adige sul leggendario Plan de Corones si è sicuramente perso qualcosa. E non stiamo parlando solo di sci. La Valdaora con le sue molteplici strutture alberghiere offre una serie infinita di allettanti proposte per una vacanza attiva, che si trasformerà in un'esperienza indimenticabile: sci da fondo, visite di attrazioni turistiche, passeggiate con le ciaspole, escursionismo invernale, discese in slittino al chiaro di luna, pattinaggio e qualsiasi altra attività vi possa piacere. Che ne direste ad esempio di una giornata dedicata al relax e al wellness in uno dei magnifici hotel con centro benessere?

Holidays at the foot of the Plan de Corones!

You definitely won't have to search for long before nature reveals herself to you in all her glory. Draw strength from the imposing sight of the Dolomites, find peace and quiet in the lush greenery or take an untroubled walk through the forests - a glance out of the window or a couple of steps from the door are enough - and you'll be repaid a thousand times if you do. Every moment is unique and yet part of a larger whole. Experience the circle of life away from the commonplace.

If you haven't experienced a ski vacation at the legendary Plan de Corones, you've missed a lot. But you can do much more than just ski here. Valdaora with its wide range of accommodations offers a number of attractive active vacationing options guaranteed to make your holidays an unforgettable experience. Cross-country skiing, sightseeing, snow-shoe-hiking and winter hiking, moonlight tobogganing, ice-skating, or whatever wintertime activity you like best. Or how about a relaxing wellness day in the luxury hotel of your choice?

Contact

Tourismusverein Olang
Associazione Turistica Valdaora
Tourist Info Valdaora / Olang

T +39 0474 496 277

info@olang.com | www.olang.com

Ein Urlaub in Olang lohnt sich!

Als Gast eines Mitgliedsbetriebs erhältst du den Kronplatz Guest Pass - digital oder bei Anreise. Diese Gästekarte bietet dir die freie Nutzung aller öffentlichen Verkehrsmittel in Südtirol sowie attraktive Vorteile und Ermäßigungen. So bist du umweltfreundlich unterwegs, entdeckst die Region flexibel und genießt ein abwechslungsreiches Freizeit- und Aktivitätenprogramm.

Highlight im Herbst: Die Golden Summit Weeks

Vom 1. Oktober bis Anfang November genießt du zusätzlich täglich eine kostenlose Berg- und Talfahrt auf den Kronplatz. Geführte Wanderungen, authentische Erlebnisse und kulinarische Highlights machen deinen Aufenthalt in dieser besonderen Jahreszeit noch abwechslungsreicher.



Golden Summit Weeks

Una vacanza a Valdaora conviene!

Come ospite di una struttura aderente ricevi il Guest Pass Plan de Corones al tuo arrivo o prima della tua partenza in forma digitale. Questa carta ospiti ti permette di utilizzare gratuitamente tutti i mezzi pubblici in Alto Adige e di approfittare di numerosi vantaggi e sconti. Così viaggi in modo sostenibile, scopri il territorio in libertà e vivi un ricco programma di attività ed esperienze.

Highlight autunnale: Golden Summit Weeks

Dal 1° ottobre ai primi di novembre usufruisci inoltre ogni giorno di una salita e discesa gratuita al Plan de Corones. Escursioni guidate, esperienze autentiche e momenti culinari rendono il tuo soggiorno ancora più vario in questo periodo speciale dell'anno.

A holiday in Olang is truly worthwhile!

As a guest of a participating accommodation, you receive the Kronplatz Guest Pass in digital form on arrival or in advance. This guest card allows you to use all public transport in South Tyrol free of charge and enjoy a range of attractive benefits and discounts. Travel sustainably, explore the region with ease and enjoy a varied programme of activities and experiences.

Autumn highlight: the Golden Summit Weeks

From 1 October to early November, you additionally enjoy one free ascent and descent on Kronplatz per day. Guided hikes, authentic experiences and culinary highlights make your stay even more diverse during this special time of year.



GUEST PASS

Alle Inklusivleistungen findest du unter:
Tutti i vantaggi sono disponibili sul sito web:
All included services are listed on the page:
www.olang.com/guestpass



Vorschau
Wochenprogramm
Anteprima del
programma settimanale
Weekly program



Flexibel unterwegs mit dem CallBus Olang

Der CallBus Olang bringt dich genau dann ans Ziel, wenn du ihn brauchst – flexibel, nachhaltig und ohne feste Fahrpläne. Der elektrische On-Demand-Bus verbindet über 90 Haltestellen im gesamten Gemeindegebiet und ergänzt den öffentlichen Nahverkehr ideal – auch dann, wenn kein Citybus, Skibus oder Linienbus fährt.

Alle Mitgliedsbetriebe sind direkt oder in unmittelbarer Nähe an eine CallBus-Haltestelle angebunden. So ist die Nutzung der öffentlichen Verkehrsmittel auch für Gäste in abgelegeneren Unterkünften bequem und zuverlässig möglich.

Die Buchung erfolgt ganz einfach per App – spontan oder bis zu 24 Stunden im Voraus. Einsteigen, zurücklehnen und entspannt ankommen: Mit dem Kronplatz Guest Pass ist der Service für dich kostenlos.

Der CallBus ist 100 % elektrisch und CO₂-neutral unterwegs und steht Gästen wie Einheimischen gleichermaßen zur Verfügung. Besonders wichtig: Auf Wunsch kann ein barrierefreies Fahrzeug bereitgestellt werden – für eine Mobilität, die wirklich für alle zugänglich ist.

App herunterladen und flexibel mobil bleiben!

Sempre in movimento con il CallBus Valdaora

Il CallBus Valdaora ti porta a destinazione esattamente quando ne hai bisogno – in modo flessibile, sostenibile e senza orari fissi. Questo bus elettrico on-demand collega oltre 90 fermate in tutto il territorio comunale e integra perfettamente il trasporto pubblico, anche quando non sono disponibili Citybus, Skibus o autobus di linea.

Tutte le strutture aderenti sono collegate direttamente o si trovano nelle immediate vicinanze di una fermata del CallBus. In questo modo, anche gli ospiti che soggiornano in strutture più decentrate possono usufruire dei mezzi pubblici in modo comodo e affidabile.

La prenotazione è semplice tramite app – spontaneamente o fino a 24 ore in anticipo. Sali a bordo, rilassati e arriva comodamente a destinazione: con il Guest Pass Plan de Coronas il servizio è gratuito.

Il CallBus è 100% elettrico e a zero emissioni di CO₂ ed è utilizzabile sia dagli ospiti che dai residenti. Su richiesta è disponibile anche un veicolo accessibile, per garantire una mobilità davvero per tutti.

Scarica l'app e viaggia in totale libertà!

Stay flexible with the CallBus Olang

The CallBus Olang takes you exactly where you need to go – whenever you need it. Flexible, sustainable and without fixed schedules, this electric on-demand bus connects over 90 stops across the entire area and perfectly complements public transport, even when no city bus, ski bus or regular bus is available.

All our accommodations are located directly at or very close to a CallBus stop. This ensures that even guests staying in more remote locations can use public transport easily and reliably.

Booking is quick and easy via the app – either spontaneously or up to 24 hours in advance. Hop on, sit back and enjoy the ride: with the Kronplatz Guest Pass, the service is free of charge.

The CallBus runs 100% electric and CO₂-neutral and is available to both guests and locals. A barrier-free vehicle can be provided on request, ensuring mobility that is accessible to everyone.

Download the app and stay mobile!





Hotel
Hubertus ★★★★★

Fam. Gasser
Furkelstraße / Via Furcia 5
39030 Geiselsberg / Sorafurcia
T +39 0474 592 104, F +39 0474 592 114
info@hotel-hubertus.com, www.hotel-hubertus.com
IT021106A1Z27AP6LF

1 55 8 10

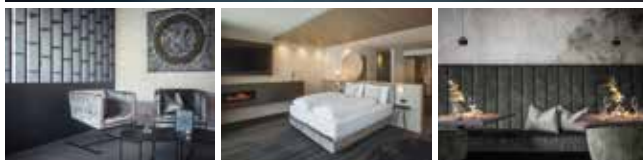


Mirabell Dolomites Hotel ★★★★★

Luxury. Ayurveda & Spa

Fam. Agstner
Via Hans von Perthalerstraße 11
39030 Mitterolang / Valdaora di Mezzo
T +39 0474 496 191, F +39 0474 498 227
hotel@mirabell.it, www.mirabell.it
IT021106A1WNCUOZ7A

3 10 33 9



Alpinhotel Keil ★★★★★^s

Lukas Brunner
Via Hans von Perthalerstraße 20
39030 Oberolang / Valdaora di Sopra
T +39 0474 496 716, F +39 0474 496 398
info@alpinhotel.it, www.alpinhotel.it
IT021106A1SHL9KC2Z

1 35 16

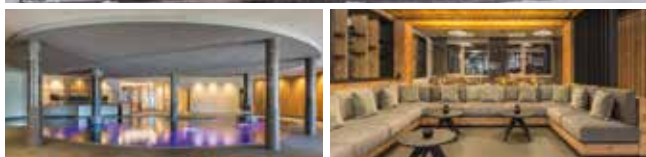


Berghotel Zirm ★★★★★^s

Fam. Schraffl
Via Egger Weg 16
39030 Geiselsberg / Sorafurcia
T +39 0474 592 054
info@berghotel-zirm.com, www.berghotel-zirm.com
IT021106A1KM8HTLBM

7 23 15

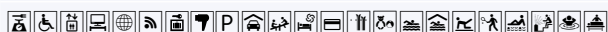




Hotel
Christoph ★★★★★

Fam. Lanz
Gassl 25
39030 Geiselsberg / Sorafurcia
T +39 0474 592 026, F +39 0474 592 121
info@hotelchristoph.it, www.hotelchristoph.it
IT021106A1M6N35YB9

🏠 6 🏠 15 🏠 16



Hotel
Fameli ★★★★★

Fam. Gasser
St. Ägidius-Weg / Via S. Egidio 13
39030 Mitterolang / Valdaora di Mezzo
T +39 0474 496 058
info@fameli.it, www.fameli.it
IT021106A1IUQAYNEF

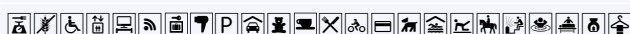
🏠 2 🏠 2 🏠 20 🏠 21 🏠 1



Hotel
Post ★★★★★

Fam. Prugger
Kirchgasse / Vicolo della Chiesa 6
39030 Oberolang / Valdaora di Sopra
T +39 0474 496 127, F +39 0474 498 019
info@hotelpost-tolderhof.com, www.hotelpost-tolderhof.com
IT021106A1AJXAAHAC

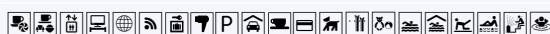
🏠 3 🏠 8 🏠 23 🏠 4



Hotel
Aichner ★★★★★

Fam. Aichner
Via Hans von Perthalerstraße 5
39030 Mitterolang / Valdaora di Mezzo
T +39 0474 496 286
info@hotel-aichner.com, www.hotel-aichner.com
IT021106A12EKHXW73

🏠 25





Historic Hotel
Alte Goste ****

Iris Radmüller
Via Goste 3
39030 Oberolang / Valdaora di Sopra
T +39 0474 496 171, F +39 0474 496 307
info@alte-goste.com, www.alte-goste.com
IT021106A1ME2YKPWVD

🏠 1 🛏️ 18 🚗 3



Hotel
Kristall ****

Fam. Erlacher
Via Egger Weg 3
39030 Geiselsberg / Sorafurcia
T +39 0474 592 077, F +39 0474 592 006
info@hotelkristall.it, www.hotelkristall.it
IT021106A1BYKFTHTR

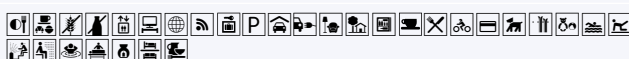
🏠 25 🛏️ 9 🚗 6



Olanderhof ****

Via Prackenweg 27
39030 Geiselsberg / Sorafurcia
T +39 0474 496 193
info@olangerhof.com, www.olangerhof.com
IT021106A1BLCMS4O9

🏠 2 🛏️ 17 🚗 9 🚗 2 🏠 2



Almhotel Lenz ****^s

Fam. Mutschlechner
Hinterbergstraße / Via Hinterberg 3
39030 Geiselsberg / Sorafurcia
T +39 0474 592 053, F +39 0474 592 173
info@almhotel-lenz.com, www.almhotel-lenz.com
IT021106A17B3O6HLQ

🏠 2 🛏️ 22 🚗 4

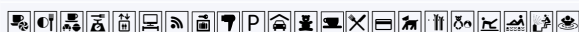




Boutique Hotel Am Park ******s**

Fam. Hochgruber
 Piazza Peter Sigmayr Platz 12
 39030 Mitterlang / Valdaora di Mezzo
 T +39 0474 496 146
 hotel@ampark.com www.ampark.com
 IT021106A1ZR8JDQ2H

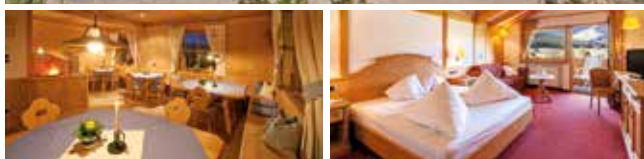
🏠 2 🏠 6 🏠 6 🏠 4



Hotel Der Tharerwirt ******s**

Fam. Steuer
 Piazza Floriani Platz 2
 39030 Mitterlang / Valdaora di Mezzo
 T +39 0474 496 150, F +39 0474 498 298
 info@tharerwirt.com, www.landhotel.it
 IT021106A1JAH2C2X8A

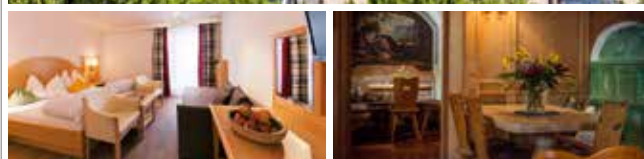
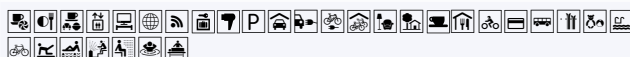
🏠 6 🏠 18 🏠 5 🏠 2



Hotel Markushof ******s**

Fam. Reden
 Wiesenweg / Via dei Prati 9
 39030 Oberlang / Valdaora di Sopra
 T +39 0474 496 250
 info@markushof.it, www.markushof.it
 IT021106A1B6OSKQUT

🏠 2 🏠 24 🏠 2



Geniesserhotel Messnerwirt ******s**

Fam. Oberhammer
 Kirchgasse / Vicolo della Chiesa 7
 39030 Oberlang / Valdaora di Sopra
 T +39 0474 496 178
 info@messnerwirt.com, www.messnerwirt.com
 IT021106A18PHL7KWF

🏠 18 🏠 3





Moar's Hotel ★★★^s

Fam. Pörnbacher
 Bahnhofstraße / Via Stazione 3
 39030 Mitterolang / Valdaora di Mezzo
 T +39 0474 496 241
 info@moars.it, www.moars.it
 IT021106A1K47PRNL6

1 12 6 1



Hotel Olaga ★★★^s

Fam. Töchterle
 Piazza Peter Sigmayr Platz 16
 39030 Mitterolang / Valdaora di Mezzo
 T +39 0474 496 141, F +39 0474 498 286
 hotel@olaga.it, www.olaga.it
 IT021106A1JLATANCS

3 17 3



auf Anfrage / su richiesta / on request



Gasthof & Schwefelbad · Albergo & bagni sulfurei · Inn & sulphur baths Bad Bergfall ★★★

Fam. Pörnbacher
 Bad Bergfall Straße / Via Bagni di Pervalle 5
 39030 Geiselsberg / Sorafurcia
 T +39 0474 592 084, F +39 0474 592 150
 info@badbergfall.com, www.badbergfall.com
 IT021106A1XK14ZTDN

1 12



Pension · Pensione · Guesthouse Pfarrewirt ★★★

Fam. Jud
 Rienzstraße / Via Rienza 2
 39030 Niederolang / Valdaora di Sotto
 T / F +39 0474 496 170
 info@pfarrewirt.bz, www.pfarrewirt.bz
 IT021106A1QW1443BY

10





Hotel
Pörnbacher ***

Fam. Grüner & Pörnbacher
Bahnhofstraße / Via Stazione 13
39030 Mitterlang / Valdaora di Mezzo
T +39 0474 496 112
info@hotel-poernbacher.it, www.hotel-poernbacher.it
IT021106A19DUYKAKS

🏠 4 🛏 16 🚿 4



Hotel
Rainegg ***

Julia Verena Agstner
Via Aue 14
39030 Oberlang / Valdaora di Sopra
T +39 0474 496 084, F +39 0474 498 390
info@hotelrainegg.it, www.hotelrainegg.it
IT021106A1A4QC3RFG

🏠 1 🛏 5 🚿 3 🚿 2



Hotel
Scherer ***

Fam. Scherer
Bahnhofstraße / Via Stazione 27
39030 Niederlang / Valdaora di Sotto
T +39 0474 496 174
info@hotelscherer.com, www.hotelscherer.com
IT021106A11XUGNIAS

🏠 2 🛏 10 🚿 6 🚿 4



Dependance
Hotelino **

Fam. Lanz
Gassl 15
39030 Geiselsberg / Sorafurcia
T +39 0474 592 026, F +39 0474 592 121
info@hotelchristoph.it, www.hotelchristoph.it
IT021106A1BZWAMXBX

🏠 4 🛏 2

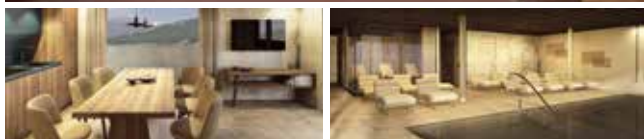




**Berggasthof
Trattes ****

Fam. Oberhauser
Furkelstraße / Via Furcia 24
39030 Geiselsberg / Sorafurcia
M +39 344 124 50 04
info@trattes.it, www.trattes.it
IT021106A1VW32TBUY

6 4



Kronplatz Luxury House Aparthotel **s**

Fam. Steuer
Pfarrstraße / Via Parrocchia 4
39030 Niederolang / Valdaora di Sotto
T +39 0474 496 173
info@hotel-kronplatz.com, www.hotel-kronplatz.com

| | | | | | |
|-------------------------------------------------------|-----|-----|-----|-----|-----|
| Apartments | 8 | 13 | 3 | 5 | 3 |
| Wohnfläche / Superficie / Living space m ² | 32 | 44 | 49 | 68 | 90 |
| Personen / Persone / Persons | 2-4 | 2-4 | 2-4 | 4-6 | 6-8 |
| Schlafraum / Camera da letto / Bedroom | | 1 | 1 | 2 | 3 |
| Badezimmer / Bagno / Bathroom | 1 | 1 | 1 | 1 | 2 |



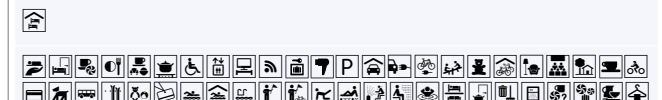
Aparthotel Familiaris ****

Family Apartments - Pools & Spa in Dolomites

Via Aue 33
39030 Oberolang / Valdaora di Sopra
T +39 0474 495 400, F +39 0474 495 499
info@winklweise.com, www.winklweise.com

IT021106B49JJFSFCM

| | | | | | |
|-------------------------------------------------------|-----|-----|-----|-----|-----|
| Apartments | 6 | 3 | 3 | 1 | 1 |
| Wohnfläche / Superficie / Living space m ² | 37 | 42 | 51 | 59 | 62 |
| Personen / Persone / Persons | 2-4 | 2-4 | 4-6 | 4-7 | 6-7 |
| Schlafraum / Camera da letto / Bedroom | | 1 | 2 | 2 | 2 |
| Badezimmer / Bagno / Bathroom | 1 | 2 | 2 | 2 | 2 |





Residence · Serviced apartments
Rouda ★★★★★

Via Hans von Perthalerstraße 23
39030 Oberolang / Valdaora di Sopra
T 0474 646 601, M +39 348 592 02 07
info@rouda.it, www.rouda.it
IT021106B4JJ2L7TD8

| | | | | |
|-------------------------------------------------------|----|-----|-----|--|
| Apartments | 1 | 10 | 3 | |
| Wohnfläche / Superficie / Living space m ² | 30 | 45 | 65 | |
| Personen / Persone / Persons | 2 | 2-4 | 4-6 | |
| Schlafrum / Camera da letto / Bedroom | 1 | 1 | 2 | |
| Badezimmer / Bagno / Bathroom | 1 | 1 | 2 | |



gegen Aufpreis / a pagamento / surcharge:



Astor Apartments ★★★

Fam. Mayr
Bahnhofstraße / Via Stazione 30
39030 Niederolang / Valdaora di Sotto
T +39 0474 496 466
info@hotel-astor.it, www.astor-apartments.com
IT021106A1QK9GMZ3M

13



Residence
Bacher ★★★

Fam. Agstner
Piazza Peter Sigmayr Platz 5
39030 Mitterolang / Valdaora di Mezzo
T +39 0474 496 191, F +39 0474 498 227
hotel@mirabell.it, www.mirabell.it/residence-bacher/
IT021106B4FK6Y4V7N

| | | | | |
|-------------------------------------------------------|-----|-----|-----|--|
| Apartments | 4 | 2 | 2 | |
| Wohnfläche / Superficie / Living space m ² | 40 | 52 | 56 | |
| Personen / Persone / Persons | 2-3 | 2-4 | 3-5 | |
| Schlafrum / Camera da letto / Bedroom | 1 | 2 | 2 | |
| Badezimmer / Bagno / Bathroom | 1 | 1 | 1 | |



Residence · Serviced apartments
Iris ★★★

Iris Radmüller
Via Goste 2
39030 Oberolang / Valdaora di Sopra
T +39 0474 496 171, F +39 0474 496 307
info@alte-goste.com, www.alte-goste.com
IT021106B4XFT4RAPX

| | | | | |
|-------------------------------------------------------|----|-----|----|--|
| Apartments | 2 | 3 | 1 | |
| Wohnfläche / Superficie / Living space m ² | 40 | 50 | 85 | |
| Personen / Persone / Persons | 2 | 2-4 | 4 | |
| Schlafrum / Camera da letto / Bedroom | 1 | 1 | 2 | |
| Badezimmer / Bagno / Bathroom | 1 | 2 | 1 | |

auf Anfrage: Frühstück oder Halbpension
su richiesta: colazione o mezza pensione / on request: breakfast or half pension





Residence · Serviced apartments
Apparthotel Jägerhof ★★★

Fam. Agstner
Via Hans von Perthalerstraße 7
39030 Mitterlang / Valdaora di Mezzo
T +39 0474 496 118

info@apparthotel-jaegerhof.it, www.apparthotel-jaegerhof.it
IT021106B4I7US7NHH

| | | | | |
|-------------------------------------------------------|-----|-----|--|--|
| Apartments | 12 | 1 | | |
| Wohnfläche / Superficie / Living space m ² | 36 | 90 | | |
| Personen / Persone / Persons | 2-4 | 4-6 | | |
| Schlafrum / Camera da letto / Bedroom | 1 | 2 | | |
| Badezimmer / Bagno / Bathroom | 1 | 2 | | |

auch Zimmer mit Frühstück
anche camere con colazione / also rooms with breakfast



gegen Aufpreis / a pagamento / surcharge:



Residence · Serviced apartments
Maximilian ★★★

Via Kerla Straße 4
39030 Mitterlang / Valdaora di Mezzo
T +39 0474 496 227

info@residence-maximilian.com, www.residence-maximilian.com
IT021106B4QVLHWT6Z

| | | | | |
|-------------------------------------------------------|----|----|----|--|
| Apartments | 1 | 1 | 7 | |
| Wohnfläche / Superficie / Living space m ² | 30 | 44 | 46 | |
| Personen / Persone / Persons | 2 | 2 | 3 | |
| Schlafrum / Camera da letto / Bedroom | | 1 | 1 | |
| Badezimmer / Bagno / Bathroom | 1 | 1 | 1 | |



Apartment 44 m²:



Residence · Serviced apartments
Sonnwies ★★★

Fam. Hans Reden
Via Seefeld 42
39030 Oberolang / Valdaora di Sopra
T +39 0474 496 250, F +39 0474 498 241

info@markushof.it, www.markushof.it
IT021106B4E2Q96TZZ

| | | | | |
|-------------------------------------------------------|----|-----|-----|--|
| Apartments | 2 | 4 | 2 | |
| Wohnfläche / Superficie / Living space m ² | 36 | 42 | 46 | |
| Personen / Persone / Persons | 2 | 2+2 | 2+2 | |
| Schlafrum / Camera da letto / Bedroom | 1 | 1 | 1 | |
| Badezimmer / Bagno / Bathroom | 1 | 1 | 1 | |

im Hotel / nell'hotel / at the hotel - gegen Aufpreis / a pagamento / surcharge:



im Hotel / nell'hotel / at the hotel - gratis:



Residence · Serviced apartments
Tharerwirt ★★★

Fam. Steuer
Piazza Floriani Platz 9
39030 Mitterlang / Valdaora di Mezzo
T +39 0474 496 150, F +39 0474 498 298

info@tharerwirt.com, www.tharerwirt.com
IT021106B4KCBTV34D

| | | | | | |
|-------------------------------------------------------|-----|-----|-----|-----|-----|
| Apartments | 4 | 2 | 1 | 1 | 1 |
| Wohnfläche / Superficie / Living space m ² | 40 | 55 | 55 | 60 | 65 |
| Personen / Persone / Persons | 2-4 | 4-5 | 2-5 | 4-5 | 4-5 |
| Schlafrum / Camera da letto / Bedroom | 1 | 2 | 2 | 2 | 2 |
| Badezimmer / Bagno / Bathroom | 1 | 1 | 1 | 1 | 1 |

im Hotel / nell'hotel / at the hotel:





Residence · Serviced apartments
Tolderhof ★★★

Fam. Martin Prugger
Wiesenweg / Via dei Prati 14
39030 Oberolang / Valdaora di Sopra
T +39 0474 496 127, F +39 0474 498 019
info@hotelpost-tolderhof.com, www.hotelpost-tolderhof.com
IT021106B4AFZV6XMF

| | | | | | |
|-------------------------------------------------------|-----|-----|-----|-----|--|
| Apartments | 2 | 2 | 4 | 4 | |
| Wohnfläche / Superficie / Living space m ² | 35 | 45 | 55 | 70 | |
| Personen / Persone / Persons | 2-4 | 2-4 | 2-4 | 2-6 | |
| Schlafrum / Camera da letto / Bedroom | | 1 | 1 | 2 | |
| Badezimmer / Bagno / Bathroom | 1 | 1 | 1 | 2 | |



auf Anfrage / su richiesta / on request:



Residence · Serviced apartments
Aichner ★★

Fam. Aichner
Via Mitterfeldweg 8-10
39030 Mitterolang / Valdaora di Mezzo
T +39 0474 496 286
info@hotel-aichner.com, www.hotel-aichner.com
IT021106A1GZJMILU9

| | | | | | |
|-------------------------------------------------------|----|----|----|----|-----|
| Apartments | 1 | 1 | 1 | 2 | 1 |
| Wohnfläche / Superficie / Living space m ² | 20 | 30 | 30 | 70 | 120 |
| Personen / Persone / Persons | 2 | 2 | 3 | 5 | 8 |
| Schlafrum / Camera da letto / Bedroom | 1 | 1 | 1 | 1 | 1 |
| Badezimmer / Bagno / Bathroom | 1 | 1 | 1 | 1 | 2 |



Residence · Serviced apartments
Bad Bergfall ★★

Fam. Pörnbacher
Bad Bergfall Straße / Via Bagni di Pervalle 6
39030 Geiselsberg / Sorafurcia
T +39 0474 592 084, F +39 0474 592 150
info@badbergfall.com, www.badbergfall.com
IT021106A192C6VQOO

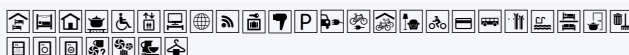
| | | | | | |
|-------------------------------------------------------|-----|-----|-----|--|--|
| Apartments | 3 | 1 | 2 | | |
| Wohnfläche / Superficie / Living space m ² | 46 | 46 | 50 | | |
| Personen / Persone / Persons | 2-4 | 2-4 | 2-4 | | |
| Schlafrum / Camera da letto / Bedroom | 1 | 2 | 2 | | |
| Badezimmer / Bagno / Bathroom | 1 | 1 | 1 | | |



Coronas Suites – Dolomites Residence ★★

Fam. Pörnbacher/Oberhuber
Piazza Floriani Platz 6
39030 Mitterolang / Valdaora di Mezzo
M +39 334 703 96 46, M +39 347 275 43 92
reception@coronessuites.com, www.coronessuites.com
IT021106A1ZBNIKRZA

| | | | | | |
|-------------------------------------------------------|-------|-------|--|--|--|
| Apartments | 7 | 5 | | | |
| Wohnfläche / Superficie / Living space m ² | 35-45 | 51-57 | | | |
| Personen / Persone / Persons | 2-4 | 3-6 | | | |
| Schlafrum / Camera da letto / Bedroom | 1 | 2 | | | |
| Badezimmer / Bagno / Bathroom | 1 | 2 | | | |





**Apartments
Gandler** ★★

Hanspeter Felder
Via Kerla Straße 1
39030 Mitterlang / Valdaora di Mezzo
M +39 348 903 03 08
info@gandler.it, www.gandler.it
IT021106A1SS63HA4C

| | | | | | |
|-------------------------------------------------------|-----|-----|-----|-----|--|
| Apartments | 2 | 10 | 3 | 1 | |
| Wohnfläche / Superficie / Living space m ² | 35 | 55 | 60 | 63 | |
| Personen / Persone / Persons | 2-3 | 2-4 | 4-5 | 4-6 | |
| Schlafrum / Camera da letto / Bedroom | 1 | 2 | 2 | 3 | |
| Badezimmer / Bagno / Bathroom | 1 | 1 | 2 | 2 | |



**Apartments
Heidi** ★★

Heidi Felder
Via Herman-von-Gilm-Weg 13
39030 Mitterlang / Valdaora di Mezzo
M +39 335 630 55 40
heidfelder66@gmail.com, www.felderheidi.it
IT021106A1L4O33ARQ

| | | | | | |
|-------------------------------------------------------|----|----|----|----|----|
| Apartments | 1 | 1 | 1 | 1 | 1 |
| Wohnfläche / Superficie / Living space m ² | 40 | 40 | 40 | 56 | 60 |
| Personen / Persone / Persons | 4 | 4 | 4 | 5 | 6 |
| Schlafrum / Camera da letto / Bedroom | 1 | 2 | 2 | 2 | 3 |
| Badezimmer / Bagno / Bathroom | 1 | 1 | 2 | 2 | 2 |



gegen Aufpreis / a pagamento / surcharge:



**Apartments & Residence · Serviced apartments
Hofer** ★★

Hubert Hofer
Rienzstraße / Via Rienza 3
39030 Niederolang / Valdaora di Sotto
T / F +39 0474 496 052
hubert.hofer@rolmail.net, www.appartements-hofer.com
IT021106A1WSVKXB7J

| | | | | | |
|-------------------------------------------------------|-----|-----|-----|-----|-----|
| Apartments | 2 | 1 | 1 | 1 | 1 |
| Wohnfläche / Superficie / Living space m ² | 50 | 54 | 56 | 70 | 70 |
| Personen / Persone / Persons | 3-5 | 3-5 | 3-5 | 4-6 | 4-6 |
| Schlafrum / Camera da letto / Bedroom | 1 | 2 | 2 | 2 | 2 |
| Badezimmer / Bagno / Bathroom | 1 | 1 | 1 | 1 | 1 |



**Residence · Serviced apartments
Klaus** ★★

Fam. Thomas Bachlechner
Via Aue 7
39030 Oberolang / Valdaora di Sopra
T +39 0474 554 098, M +39 329 748 34 75
info@residenceklaus.com, www.residenceklaus.com
IT021106A1DTQTDQ47

| | | | | | |
|-------------------------------------------------------|-----|-----|-----|--|--|
| Apartments | 1 | 3 | 2 | | |
| Wohnfläche / Superficie / Living space m ² | 60 | 60 | 75 | | |
| Personen / Persone / Persons | 4-5 | 4-5 | 6-7 | | |
| Schlafrum / Camera da letto / Bedroom | 2 | 2 | 3 | | |
| Badezimmer / Bagno / Bathroom | 1 | 2 | 2 | | |





Apartments Moser **

Fam. Herbert Moser
Piazza Peter Sigmayr Platz 1
39030 Mitterolang / Valdaora di Mezzo
M +39 348 523 36 74
info@moser.bz, www.moser.bz
IT021106A1BQ6M8AT6

| | | | | | |
|-------------------------------------------------------|-----|----|-----|-----|--|
| Apartments | 4 | 2 | 1 | 2 | |
| Wohnfläche / Superficie / Living space m ² | 28 | 35 | 45 | 50 | |
| Personen / Persone / Persons | 2-3 | 4 | 4-5 | 4-5 | |
| Schlafrum / Camera da letto / Bedroom | 1 | 1 | 2 | 1 | |
| Badezimmer / Bagno / Bathroom | 1 | 1 | 1 | 1 | |



Apartments Mutschlechner **

Katharina Auer
Via Baumgartenweg 1
39030 Mitterolang / Valdaora di Mezzo
M +39 348 705 87 70
info@app-mutschlechner.it, www.app-mutschlechner.it
IT021106A1JOJ326OE

| | | | | |
|-------------------------------------------------------|-----|-------|-------|--|
| Apartments | 1 | 3 | 2 | |
| Wohnfläche / Superficie / Living space m ² | 28 | 31-35 | 34-40 | |
| Personen / Persone / Persons | 2-3 | 2-4 | 2-5 | |
| Schlafrum / Camera da letto / Bedroom | | 1 | 1 | |
| Badezimmer / Bagno / Bathroom | 1 | 1 | 1 | |



Residence · Serviced apartments Oberhauser **

Gottfried Steiner
Via Aue 26
39030 Oberolang / Valdaora di Sopra
T +39 0474 497 031, F +39 0474 498 373, M +39 348 301 54 10
info@residence-oberhauser.com
IT021106A1QAKZGQEU

| | | | | |
|-------------------------------------------------------|-----|-----|-----|--|
| Apartments | 1 | 3 | 1 | |
| Wohnfläche / Superficie / Living space m ² | 33 | 42 | 70 | |
| Personen / Persone / Persons | 2-3 | 3-4 | 4-6 | |
| Schlafrum / Camera da letto / Bedroom | 1 | 1 | 2 | |
| Badezimmer / Bagno / Bathroom | 1 | 1 | 2 | |



Ferienwohnungen · Apartments Schnarf **

Ursula Schnarf
Pfarrstraße / Via Parrocchia 18
39030 Niederolang / Valdaora di Sotto
T +39 0474 496 175, M +39 349 834 07 08
info@schnarf.net, www.schnarf.net
IT021106A1ERRPKPY - IT021106A1FVZR5NEJ

| | | | | |
|-------------------------------------------------------|-----|-----|-----|-----|
| Apartments | 4 | 1 | 1 | 1 |
| Wohnfläche / Superficie / Living space m ² | 30 | 48 | 64 | 90 |
| Personen / Persone / Persons | 2-3 | 2-4 | 4-6 | 6-9 |
| Schlafrum / Camera da letto / Bedroom | 1 | 1 | 2 | 3 |
| Badezimmer / Bagno / Bathroom | 1 | 1 | 1 | 3 |



auf Anfrage / su richiesta / on request:

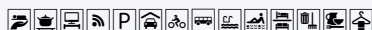


Apartments
Schnarf Martin **

Schnarf Martin KG
Oberrain 10
39030 Niederolang / Valdaora di Sotto
T +39 0474 498 491

info@appartements-schnarf.com, www.appartements-schnarf.com
IT021106A15P67PKY2

| | | | | | |
|-------------------------------------------------------|-----|-----|-----|--|--|
| Apartments | 3 | 1 | 2 | | |
| Wohnfläche / Superficie / Living space m ² | 34 | 50 | 50 | | |
| Personen / Persone / Persons | 2-4 | 2-4 | 2-4 | | |
| Schlafrum / Camera da letto / Bedroom | 1 | 1 | 2 | | |
| Badezimmer / Bagno / Bathroom | 1 | 1 | 1 | | |



auf Anfrage / su richiesta / on request



Apartments
Sigmair **

Piazza Peter Sigmayr Platz 4
39030 Mitterolang / Valdaora di Mezzo
M +39 340 371 90 75

info@sigmair.it, www.olang.com/sigmair
IT021106A1BHKR9HVL

| | | | | | |
|-------------------------------------------------------|-----|-----|-----|-----|-----|
| Apartments | 1 | 1 | 1 | 1 | 1 |
| Wohnfläche / Superficie / Living space m ² | 35 | 40 | 45 | 50 | 55 |
| Personen / Persone / Persons | 2-3 | 2-4 | 2-5 | 3-5 | 4-6 |
| Schlafrum / Camera da letto / Bedroom | 1 | 1 | 1 | 2 | 2 |
| Badezimmer / Bagno / Bathroom | 1 | 1 | 1 | 2 | 2 |



Garni · Apartments
Moser **

Fam. Herbert Moser
Via Herman-von-Gilm-Weg 2
39030 Mitterolang / Valdaora di Mezzo
M +39 348 523 36 74

info@moser.bz, www.moser.bz
IT021106A1Q647592P

| | | | | | |
|-------------------------------------------------------|----|-----|----|--|--|
| Apartments | 3 | 1 | 2 | | |
| Wohnfläche / Superficie / Living space m ² | 30 | 33 | 40 | | |
| Personen / Persone / Persons | 2 | 2-3 | 4 | | |
| Schlafrum / Camera da letto / Bedroom | 1 | 1 | 1 | | |
| Badezimmer / Bagno / Bathroom | 1 | 1 | 1 | | |

6



Apartments with breakfast · Rooms with breakfast
Kruma *

Kirchgasse / Vicolo della Chiesa 14
39030 Oberolang / Valdaora di Sopra
M +39 346 133 32 98

info@kruma.it, www.kruma.it
IT021106A1MKEZF2JB

| | | | | | |
|-------------------------------------------------------|-----|-----|-----|--|--|
| Apartments | 2 | 3 | 2 | | |
| Wohnfläche / Superficie / Living space m ² | 25 | 40 | 60 | | |
| Personen / Persone / Persons | 2-3 | 2-5 | 4-8 | | |
| Schlafrum / Camera da letto / Bedroom | 1 | 1 | 2 | | |
| Badezimmer / Bagno / Bathroom | 1 | 2 | 2 | | |

6 7





Haus · Casa · House **Grüner** ***

Marion Grüner
 Via Greitweg 1
 39030 Oberolang / Valdaora di Sopra
 T +39 0474 496 016, M +39 347 642 25 21
 info@hausgruener.com, www.hausgruener.com
 IT021106B49FMVRZES



Haus · Casa · House **Auer Irene** **

Pfarrstraße / Via Parrocchia 6
 39030 Niederolang / Valdaora di Sotto
 T +39 0474 496 194
 haus.auer@cmail.it
 IT021106B4MRFF7CGM



Haus · Casa · House **Plaikner** **

Hannes Plaikner
 Via Greitweg 5
 39030 Oberolang / Valdaora di Sopra
 T +39 0474 496 055, M +39 349 505 75 83
 bedandbreakfast@plaikner-bz.it
 IT021106B462KRCMEN



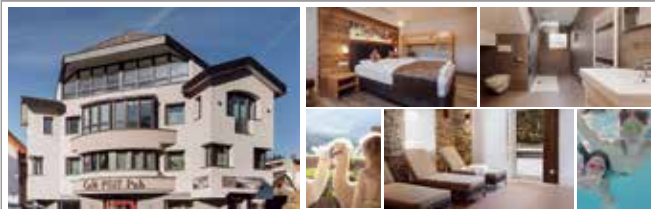


Chalet Piz da Peres *****

Klaus Wolfsgruber
 Furkelstraße / Via Furcia 4
 39030 Geiselsberg / Sorafurcia
 M +39 335 222 976
 info@chaletpizdaperes.com, www.chaletpizdaperes.com

IT021106B4E6L6FEKO

| | | | | |
|-------------------------------------------------------|-----|-----|-----|-----|
| Chalets | 1 | 1 | 1 | 1 |
| Wohnfläche / Superficie / Living space m ² | 35 | 40 | 54 | 66 |
| Personen / Persone / Persons | 2-3 | 2-4 | 2-6 | 2-7 |
| Schlafraum / Camera da letto / Bedroom | 1 | 1 | 2 | 3 |
| Badezimmer / Bagno / Bathroom | 1 | 1 | 1 | 1 |



Alpenvilla Large Family Apartment *****

Pools - 500 meters - by Familiaris

Dorfstraße / Via del Borgo 7
 39030 Oberolang / Valdaora di Sopra
 T +39 0474 495 400, F +39 0474 495 499
 info@winklweise.com, www.winklweise.com

IT021106B4M6J7BKH5

| | | | | |
|-------------------------------------------------------|-----|--|--|--|
| Apartments | 1 | | | |
| Wohnfläche / Superficie / Living space m ² | 110 | | | |
| Personen / Persone / Persons | 9 | | | |
| Schlafraum / Camera da letto / Bedroom | 3 | | | |
| Badezimmer / Bagno / Bathroom | 2 | | | |



ca. 400 m entfernt / distante / away: Wiwi-Land & Alpaka-Farm

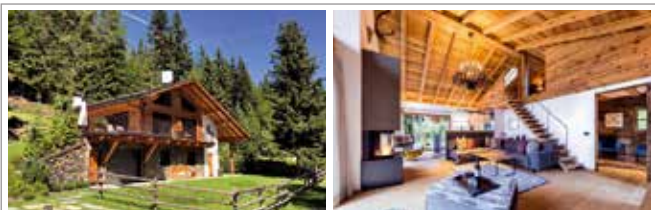


Apartments Birkenheim *****

Fam. Gottfried & Irmgard Mair
 Rienzstraße / Via Rienza 27
 39030 Niederolang / Valdaora di Sotto
 M +39 349 307 87 03
 info@birkenheim.net, www.birkenheim.net

IT021106B4W83S3KNW

| | | | | |
|-------------------------------------------------------|-----|-----|--|--|
| Apartments | 1 | 1 | | |
| Wohnfläche / Superficie / Living space m ² | 60 | 90 | | |
| Personen / Persone / Persons | 4-5 | 6-8 | | |
| Schlafraum / Camera da letto / Bedroom | 2 | 3 | | |
| Badezimmer / Bagno / Bathroom | 2 | 3 | | |



Chalet K-Lodge „Mountain“ *****

Fam. Holzer
 Via Prackenweg 23
 39030 Geiselsberg / Sorafurcia
 M +39 348 228 32 27
 info@k-lodge.it, www.k-lodge.it

IT021106B4TGM2XWL4

| | | | | |
|-------------------------------------------------------|-----|--|--|--|
| Chalet | 1 | | | |
| Wohnfläche / Superficie / Living space m ² | 200 | | | |
| Personen / Persone / Persons | 8 | | | |
| Schlafraum / Camera da letto / Bedroom | 4 | | | |
| Badezimmer / Bagno / Bathroom | 4 | | | |



Chalet K-Lodge „The View“

Fam. Holzer
 Via Furkelstraße 2
 39030 Geiselsberg / Sorafurcia
 M +39 348 228 32 27
 info@k-lodge.it, [view.k-lodge.it](http://www.k-lodge.it)

IT021106B4DMMYMK899

| | | | | |
|-------------------------------------------------------|------|--|--|--|
| Chalet | 1 | | | |
| Wohnfläche / Superficie / Living space m ² | 500 | | | |
| Personen / Persone / Persons | 2-12 | | | |
| Schlafraum / Camera da letto / Bedroom | 6 | | | |
| Badezimmer / Bagno / Bathroom | 7 | | | |



Chalet Tyrolian Apartments *****

Private Spa - Pools - 500 meters - by Familiaris

Via Hans von Perthalerstraße 22
 39030 Oberolang / Valdaora di Sopra
 T +39 0474 495 400, F +39 0474 495 499
 info@winklweise.com, www.winklweise.com

IT021106B4FD448JFH

| | | | | |
|-------------------------------------------------------|-------------|-------------|-----|--------|
| Apartments | Double room | Double room | 1 | Chalet |
| Wohnfläche / Superficie / Living space m ² | 14 | 39 | 50 | 117 |
| Personen / Persone / Persons | 2 | 2-4 | 4-6 | 14 |
| Schlafraum / Camera da letto / Bedroom | 1 | 2 | 2 | 5 |
| Badezimmer / Bagno / Bathroom | 1 | 1 | 2 | 7 |



ca. 400 m entfernt / distante / away: Wiwi-Land & Alpaka-Farm



Fameli Dolce Vita Apartment ****

Fam. Gasser
 St. Ägidius-Weg / Via S. Egidio 13
 39030 Mitterolang / Valdaora di Mezzo
 T +39 0474 496 058
 info@fameli.it, www.fameli.it/dolce-vita-apartment
 IT021106B4EUWWWY52

| | | | | |
|-------------------------------------------------------|------|--|--|--|
| Apartments | 1 | | | |
| Wohnfläche / Superficie / Living space m ² | 140 | | | |
| Personen / Persone / Persons | 4-10 | | | |
| Schlafraum / Camera da letto / Bedroom | 4 | | | |
| Badezimmer / Bagno / Bathroom | 2 | | | |



Apartments Frieda ****

Frieda Aichner
 Rienzstraße / Via Rienza 18
 39030 Niederolang / Valdaora di Sotto
 M +39 347 015 18 21
 frieda.aichner@gmail.com, www.apartmentsfrieda.com
 IT021106B4BQA3384E

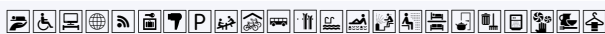
| | | | | |
|-------------------------------------------------------|-----|--|--|--|
| Apartments | 2 | | | |
| Wohnfläche / Superficie / Living space m ² | 65 | | | |
| Personen / Persone / Persons | 2-4 | | | |
| Schlafraum / Camera da letto / Bedroom | 2 | | | |
| Badezimmer / Bagno / Bathroom | 2 | | | |



Apartments Garden ****

Norbert Steiner
 Via Hans von Perthalerstraße 18
 39030 Oberolang / Valdaora di Sopra
 T +39 0474 496 056
 info@app-steiner-garden.com, www.app-steiner-garden.com
 IT021106B4DKKPGNLS

| | | | | |
|-------------------------------------------------------|-----|-----|-----|--|
| Apartments | 2 | 1 | 1 | |
| Wohnfläche / Superficie / Living space m ² | 60 | 70 | 75 | |
| Personen / Persone / Persons | 2-4 | 4-6 | 4-6 | |
| Schlafraum / Camera da letto / Bedroom | 2 | 3 | 2 | |
| Badezimmer / Bagno / Bathroom | 1 | 2 | 1 | |



auf Anfrage / su richiesta / on request



Apartments Hossler ****

Fam. Mutschlechner
 Furkelstraße / Via Furcia 1
 39030 Geiselsberg / Sorafurcia
 M +39 389 271 18 85
 info@hossler.it, www.hossler.it
 IT021106B4BEZELC79

| | | | | |
|-------------------------------------------------------|-----|--|--|--|
| Apartments | 1 | | | |
| Wohnfläche / Superficie / Living space m ² | 45 | | | |
| Personen / Persone / Persons | 2-4 | | | |
| Schlafraum / Camera da letto / Bedroom | 1 | | | |
| Badezimmer / Bagno / Bathroom | 1 | | | |



Apartments Sapelza ****

Johann Sapelza
 Via Ave 36, 39030 Oberolang / Valdaora di Sopra
 M +39 348 709 48 98
 info@sapelza.com, www.sapelza.com
 IT021106B4CA3QGGAZR

| | | | | |
|-------------------------------------------------------|-----|-----|-----|-----|
| Apartments | 1 | 1 | 1 | 1 |
| Wohnfläche / Superficie / Living space m ² | 32 | 34 | 37 | 49 |
| Personen / Persone / Persons | 2-3 | 2-3 | 2-4 | 4-5 |
| Schlafraum / Camera da letto / Bedroom | 1 | 1 | 1 | 2 |
| Badezimmer / Bagno / Bathroom | 1 | 1 | 1 | 1 |



auf Anfrage / su richiesta / on request



Apartments Steiner ****

Fam. Gertrud Steiner
 Via Hans von Perthalerstraße 19
 39030 Oberolang / Valdaora di Sopra
 T +39 0474 496 056
 info@app-steiner-garden.com, www.app-steiner-garden.com
 IT021106B424VZYMG

| | | | | |
|-------------------------------------------------------|-----|-----|-----|-----|
| Apartments | 1 | 2 | 1 | 1 |
| Wohnfläche / Superficie / Living space m ² | 50 | 70 | 75 | 80 |
| Personen / Persone / Persons | 2-3 | 4-6 | 2-5 | 4-7 |
| Schlafraum / Camera da letto / Bedroom | 1 | 2 | 3 | 3 |
| Badezimmer / Bagno / Bathroom | 1 | 2 | 1 | 2 |



auf Anfrage / su richiesta / on request:



Apartments **Anna** ***

Fam. Verdorfer
Oberrain 15
39030 Niederolang / Valdaora di Sotto
M +39 340 956 95 57
info@app-anna.it, www.app-anna.it
IT021106B4RCP4PYM6

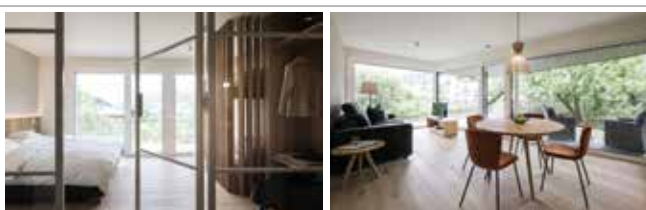
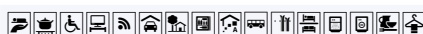
| | | | | |
|-------------------------------------------------------|-----|-----|--|--|
| Apartments | 1 | 1 | | |
| Wohnfläche / Superficie / Living space m ² | 45 | 90 | | |
| Personen / Persone / Persons | 2-4 | 5-8 | | |
| Schlafraum / Camera da letto / Bedroom | 2 | 3 | | |
| Badezimmer / Bagno / Bathroom | 1 | 2 | | |



Deluxe Appartement **Arve** ***

Fam. Schraffl
Piazza Peter Sigmayr Platz 10
39030 Mitterolang / Valdaora di Mezzo
M +39 348 334 72 10
info@arve.bz, www.arve.bz
IT021106B4MNX33WLD

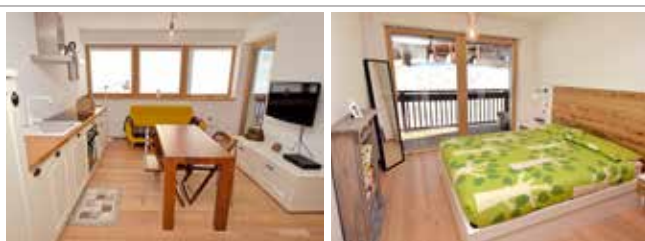
| | | | | |
|-------------------------------------------------------|----|--|--|--|
| Apartments | 1 | | | |
| Wohnfläche / Superficie / Living space m ² | 50 | | | |
| Personen / Persone / Persons | 3 | | | |
| Schlafraum / Camera da letto / Bedroom | 2 | | | |
| Badezimmer / Bagno / Bathroom | 1 | | | |



Astor Living ***

Fam. Mayr
Bahnhofstraße / Via Stazione 30
39030 Niederolang / Valdaora di Sotto
T +39 0474 496 466
info@hotel-astor.it, www.astor-apartments.com
IT021106B4SDAHHYLL

| | | | | |
|-------------------------------------------------------|-----|-----|-----|--|
| Apartments | 1 | 3 | 1 | |
| Wohnfläche / Superficie / Living space m ² | 60 | 80 | 110 | |
| Personen / Persone / Persons | 2-3 | 2-4 | 4-6 | |
| Schlafraum / Camera da letto / Bedroom | 1 | 2 | 2 | |
| Badezimmer / Bagno / Bathroom | 1 | 1-2 | 2 | |



Aurturist Appartement 114 ***

Gasl 5
39030 Geiselsberg / Sorafurcia
T +39 0474 916 118
info@aurturist.com, www.aurturist.com
IT021106B49G436LE9

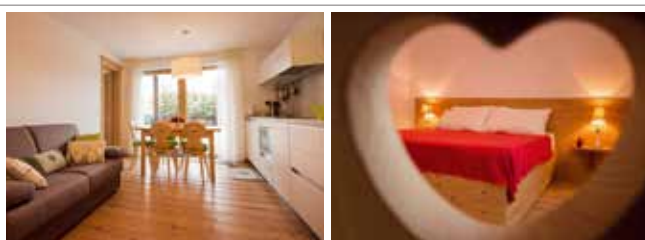
| | | | | |
|-------------------------------------------------------|----|--|--|--|
| Apartments | 1 | | | |
| Wohnfläche / Superficie / Living space m ² | 73 | | | |
| Personen / Persone / Persons | 4 | | | |
| Schlafraum / Camera da letto / Bedroom | 2 | | | |
| Badezimmer / Bagno / Bathroom | 1 | | | |



Aurturist Appartement 121 ***

Via Kerla Straße 7
39030 Mitterolang / Valdaora di Mezzo
T +39 0474 916 118
info@aurturist.com, www.aurturist.com
IT021106B478H9B7JM

| | | | | |
|-------------------------------------------------------|-----|--|--|--|
| Apartments | 1 | | | |
| Wohnfläche / Superficie / Living space m ² | 59 | | | |
| Personen / Persone / Persons | 2-4 | | | |
| Schlafraum / Camera da letto / Bedroom | 1 | | | |
| Badezimmer / Bagno / Bathroom | 1 | | | |



Aurturist Appartement 159 ***

Gasl 5
39030 Geiselsberg / Sorafurcia
T +39 0474 916 118
info@aurturist.com, www.aurturist.com
IT021106B49G436LE9

| | | | | |
|-------------------------------------------------------|-----|--|--|--|
| Apartments | 1 | | | |
| Wohnfläche / Superficie / Living space m ² | 60 | | | |
| Personen / Persone / Persons | 4-6 | | | |
| Schlafraum / Camera da letto / Bedroom | 2 | | | |
| Badezimmer / Bagno / Bathroom | 1 | | | |





Aurturist Appartement 183 ***

Wiesenweg / Via dei Prati 5A
39030 Oberolang / Valdaora di Sopra
T +39 0474 916 118

info@aurturist.com, www.aurturist.com

IT021106B4OC797KV3

| | | | | |
|-------------------------------------------------------|-----|--|--|--|
| Apartments | 1 | | | |
| Wohnfläche / Superficie / Living space m ² | 40 | | | |
| Personen / Persone / Persons | 2-3 | | | |
| Schlafrum / Camera da letto / Bedroom | 1 | | | |
| Badezimmer / Bagno / Bathroom | 1 | | | |



Apartments Beikircher ***

Via Aue 31
39030 Oberolang / Valdaora di Sopra
M +39 346 133 32 98

info@beikircher.info, aue.beikircher.info

IT021106B42OVA89SI

| | | | | |
|-------------------------------------------------------|-----|-----|-----|-----|
| Apartments | 1 | 1 | 1 | 1 |
| Wohnfläche / Superficie / Living space m ² | 40 | 40 | 63 | 100 |
| Personen / Persone / Persons | 2-3 | 2-4 | 4-6 | 6-9 |
| Schlafrum / Camera da letto / Bedroom | 1 | 1 | 2 | 3 |
| Badezimmer / Bagno / Bathroom | 1 | 1 | 2 | 3 |



Chalet Bergfreund ***

Fam. Schuster

Via Prackenweg 21
39030 Geiselsberg / Sorafurcia
M +39 348 709 48 23

info@chalet-bergfreund.com, www.chalet-bergfreund.com

IT021106B4YQ8KY6UH

| | | | | |
|-------------------------------------------------------|-----|--|--|--|
| Chalet | 1 | | | |
| Wohnfläche / Superficie / Living space m ² | 230 | | | |
| Personen / Persone / Persons | 2-8 | | | |
| Schlafrum / Camera da letto / Bedroom | 4 | | | |
| Badezimmer / Bagno / Bathroom | 2 | | | |



Apartments Chalet Martin ***

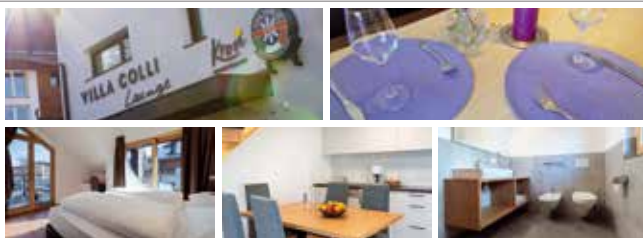
Hildegard Casanova

Gasl 5
39030 Geiselsberg / Sorafurcia
M +39 348 736 07 54

info@chalet-martin.it, www.chalet-martin.it

IT021106B453AULA66

| | | | | |
|-------------------------------------------------------|-----|--|--|--|
| Apartments | 1 | | | |
| Wohnfläche / Superficie / Living space m ² | 47 | | | |
| Personen / Persone / Persons | 2-5 | | | |
| Schlafrum / Camera da letto / Bedroom | 2 | | | |
| Badezimmer / Bagno / Bathroom | 1 | | | |



Apartments Colli ***

Piazza Peter Sigmayr Platz 13
39030 Mitterolang / Valdaora di Mezzo
M +39 345 975 57 99

info@appartements-colli.com, www.appartements-colli.com

IT021106B4SDTSJL2B

| | | | | |
|-------------------------------------------------------|-----|--|--|--|
| Apartments | 2 | | | |
| Wohnfläche / Superficie / Living space m ² | 50 | | | |
| Personen / Persone / Persons | 4-6 | | | |
| Schlafrum / Camera da letto / Bedroom | 2 | | | |
| Badezimmer / Bagno / Bathroom | 1 | | | |



Apartments Durnbrunn ***

Durnbrunnweg / Via Durnbrunn 16
39030 Mitterolang / Valdaora di Mezzo
M +39 348 260 96 59

durnbrunn@gmail.com

IT021106B4KFH35VLL

| | | | | |
|-------------------------------------------------------|-----|-----|--|--|
| Apartments | 2 | 2 | | |
| Wohnfläche / Superficie / Living space m ² | 40 | 70 | | |
| Personen / Persone / Persons | 2-4 | 4-8 | | |
| Schlafrum / Camera da letto / Bedroom | 1 | 2 | | |
| Badezimmer / Bagno / Bathroom | 1 | 2 | | |





Apartments **Felder Erika** ***

Fam. Felder
Geiselsberger Straße / Via Sorafurcia 13
39030 Mitterlang / Valdaora di Mezzo
T / F +39 0474 944 382, M +39 349 634 81 82
info@felder.it, www.felder.it
IT021106B4COS75CS3

| | | | | | |
|-------------------------------------------------------|-----|-----|----|--|--|
| Apartments | 1 | 1 | 1 | | |
| Wohnfläche / Superficie / Living space m ² | 30 | 65 | 95 | | |
| Personen / Persone / Persons | 2-3 | 4-5 | 8 | | |
| Schlafrum / Camera da letto / Bedroom | 1 | 2 | 4 | | |
| Badezimmer / Bagno / Bathroom | 1 | 2 | 3 | | |



Haus · Casa · House **Hainz** ***

Fam. Hainz
Gasl 18, 39030 Geiselsberg / Sorafurcia
M +39 347 500 54 14
info@haus-hainz.bz, www.haus-hainz.bz
IT021106B4A5VERI89

| | | | | | |
|-------------------------------------------------------|-----|-----|-----|--|--|
| Apartments | 1 | 1 | 1 | | |
| Wohnfläche / Superficie / Living space m ² | 47 | 50 | 55 | | |
| Personen / Persone / Persons | 2-4 | 2-4 | 2-4 | | |
| Schlafrum / Camera da letto / Bedroom | 1 | 1 | 1 | | |
| Badezimmer / Bagno / Bathroom | 1 | 1 | 1 | | |

auch Zimmer /
anche camere /
also rooms



Apartments **Hus** ***

Fam. Mair
Via Hermann-von-Gilm-Weg 16
39030 Mitterlang / Valdaora di Mezzo
M +39 380 596 35 59
info@appartements-hus.com, www.appartements-hus.com
IT021106B4WYOIBQ4D

| | | | | | |
|-------------------------------------------------------|-----|-----|-----|-----|-----|
| Apartments | 1 | 1 | 1 | 1 | 1 |
| Wohnfläche / Superficie / Living space m ² | 30 | 36 | 37 | 45 | 60 |
| Personen / Persone / Persons | 2-3 | 2-4 | 2-5 | 2-4 | 4-6 |
| Schlafrum / Camera da letto / Bedroom | 1 | 1 | 1 | 1 | 2 |
| Badezimmer / Bagno / Bathroom | 1 | 1 | 1 | 1 | 2 |



Apartments **Kreuzerhof** ***

Thomas Mutschlechner & Co.
Via Egger Weg 1, 39030 Geiselsberg / Sorafurcia
M +39 320 391 11 00
urlaub@kreuzerhof.it, www.kreuzerhof.it
IT021106B4RCB2AIGV

| | | | | | |
|-------------------------------------------------------|----|----|--|--|--|
| Apartments | 1 | 4 | | | |
| Wohnfläche / Superficie / Living space m ² | 33 | 38 | | | |
| Personen / Persone / Persons | 4 | 4 | | | |
| Schlafrum / Camera da letto / Bedroom | 2 | 2 | | | |
| Badezimmer / Bagno / Bathroom | 1 | 1 | | | |



auf Anfrage / su richiesta / on request:



Apartments **Kriendl** ***

Hannes Denicolò
Piazza Floriani Platz 15
39030 Mitterlang / Valdaora di Mezzo
M +39 347 658 01 49
info@kriendl.it, www.kriendl.it
IT021106B43BND39O5

| | | | | | |
|-------------------------------------------------------|-----|-----|--|--|--|
| Apartments | 3 | 1 | | | |
| Wohnfläche / Superficie / Living space m ² | 37 | 50 | | | |
| Personen / Persone / Persons | 2-4 | 2-4 | | | |
| Schlafrum / Camera da letto / Bedroom | 1 | 1 | | | |
| Badezimmer / Bagno / Bathroom | 1 | 1 | | | |



Chalet **Kronplatz Ski Lodge** ***

Fam. Holzer
Via Prackenberg 29
39030 Geiselsberg / Sorafurcia
M +39 335 686 87 90
edeltraudstifter@gmx.net, www.kronplatz-ski-lodge.it
IT021106B442YPAZ4C

| | | | | | |
|-------------------------------------------------------|-----|--|--|--|--|
| Apartments | 1 | | | | |
| Wohnfläche / Superficie / Living space m ² | 160 | | | | |
| Personen / Persone / Persons | 2-8 | | | | |
| Schlafrum / Camera da letto / Bedroom | 4 | | | | |
| Badezimmer / Bagno / Bathroom | 3 | | | | |





Small Luxury Apartments **Lausa** ***

Sandra Thaler
 St. Ägidius-Weg / Via S. Egidio 8A
 39030 Mitterolang / Valdaora di Mezzo
 M +39 349 226 43 73
 info@lausea.bz, www.lausea.bz
 IT021106B4564Z65KQ

| | | | | |
|-------------------------------------------------------|-----|-----|--|--|
| Apartments | 1 | 1 | | |
| Wohnfläche / Superficie / Living space m ² | 32 | 53 | | |
| Personen / Persone / Persons | 2-4 | 2-5 | | |
| Schlafrum / Camera da letto / Bedroom | 1 | 1 | | |
| Badezimmer / Bagno / Bathroom | 1 | 2 | | |



Apartments **Lunzer Garten** ***

Fam. Ladstätter
 Dorfstraße / Via del Borgo 15
 39030 Oberolang / Valdaora di Sopra
 T +39 0474 496 045, M +39 347 755 42 93
 info@lunzer-garten.com, www.olang.com/lunzer-garten-de
 IT021106B4CJV6LVSO

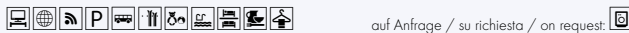
| | | | | |
|-------------------------------------------------------|-----|----|-----|-----|
| Apartments | 3 | 1 | 1 | 1 |
| Wohnfläche / Superficie / Living space m ² | 30 | 38 | 48 | 62 |
| Personen / Persone / Persons | 2-3 | 3 | 2-4 | 4-6 |
| Schlafrum / Camera da letto / Bedroom | 1 | 1 | 1 | 2 |
| Badezimmer / Bagno / Bathroom | 1 | 1 | 1 | 1 |



Apartments **Mair Christof** ***

Christof Mair
 Via Pichl Weg 1
 39030 Mitterolang / Valdaora di Mezzo
 T / F +39 0474 497 017
 ferien.eiland@rolmail.net, www.apartment-eilandhof.it
 IT021106B48DDDBOLXW

| | | | | |
|-------------------------------------------------------|-----|--|--|--|
| Apartments | 1 | | | |
| Wohnfläche / Superficie / Living space m ² | 80 | | | |
| Personen / Persone / Persons | 2-5 | | | |
| Schlafrum / Camera da letto / Bedroom | 2 | | | |
| Badezimmer / Bagno / Bathroom | 1 | | | |



auf Anfrage / su richiesta / on request:



Apartments **Marianne** ***

Fam. Pircher
 Hauptstraße / Strada principale 1
 39030 Mitterolang / Valdaora di Mezzo
 T +39 0474 646 320, M +39 335 101 74 71
 frei@pircherpartner.com
 IT021106B4EZQHWGUL

| | | | | |
|-------------------------------------------------------|-----|--|--|--|
| Apartments | 1 | | | |
| Wohnfläche / Superficie / Living space m ² | 67 | | | |
| Personen / Persone / Persons | 2-5 | | | |
| Schlafrum / Camera da letto / Bedroom | 3 | | | |
| Badezimmer / Bagno / Bathroom | 2 | | | |



Apartments **Mayr Christine** ***

Rienzstraße / Via Rienza 10
 39030 Niederolang / Valdaora die Sotto
 T / F +39 0474 410 527, M +39 339 584 51 12
 mayrchristine25@gmail.com, www.christineapartments.it
 IT021106B4Y2QI7HGW

| | | | | |
|-------------------------------------------------------|----|----|----|--|
| Apartments | 1 | 1 | 1 | |
| Wohnfläche / Superficie / Living space m ² | 46 | 74 | 80 | |
| Personen / Persone / Persons | 2 | 5 | 6 | |
| Schlafrum / Camera da letto / Bedroom | 1 | 3 | 3 | |
| Badezimmer / Bagno / Bathroom | 1 | 2 | 2 | |



auf Anfrage / su richiesta / on request:



Residence **Mühlegg** ***

Fam. Lanz
 Gassl 28
 39030 Geiselsberg / Sorafurcia
 T +39 0474 592 026, F +39 0474 592 121
 info@hotelchristoph.it, www.hotelchristoph.it
 IT021106B4E25QLZF

| | | | | |
|-------------------------------------------------------|-----|-----|-----|--|
| Apartments | 1 | 1 | 1 | |
| Wohnfläche / Superficie / Living space m ² | 72 | 82 | 98 | |
| Personen / Persone / Persons | 4-8 | 4-7 | 6-9 | |
| Schlafrum / Camera da letto / Bedroom | 2 | 2 | 3 | |
| Badezimmer / Bagno / Bathroom | 3 | 3 | 4 | |





Apartments **Oberegger Emil** ***

Fam. Oberegger
Via Seefeld 21
39030 Oberolang / Valdaora di Sopra
M +39 340 698 66 28
emil.oberegger@rolmail.net, www.oberegger.bz.it
IT021106B4Y6AFAX5M

| | | | | |
|-------------------------------------------------------|-----|--|--|--|
| Apartments | 2 | | | |
| Wohnfläche / Superficie / Living space m ² | 50 | | | |
| Personen / Persone / Persons | 2-4 | | | |
| Schlafraum / Camera da letto / Bedroom | 2 | | | |
| Badezimmer / Bagno / Bathroom | 1 | | | |



Apartments **Oberleiter Stefan** ***

Pfarrstraße / Via Parrocchia 20
39030 Niederolang / Valdaora di Sotto
T / F +39 0474 496 294
info@oberleiter.net, albina@oberleiter.net, www.oberleiter.net
IT021106B4NPQD4J68

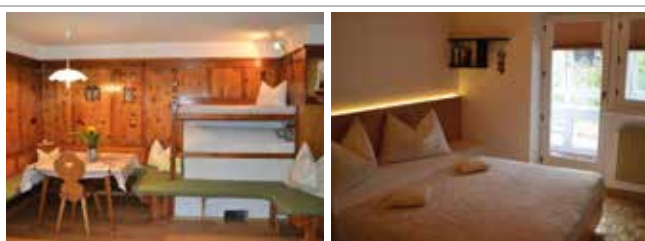
| | | | | |
|-------------------------------------------------------|-----|-----|--|--|
| Apartments | 1 | 1 | | |
| Wohnfläche / Superficie / Living space m ² | 34 | 80 | | |
| Personen / Persone / Persons | 2-3 | 4-7 | | |
| Schlafraum / Camera da letto / Bedroom | 1 | 3 | | |
| Badezimmer / Bagno / Bathroom | 1 | 2 | | |



Apartments **Elisabeth Neunhäuserer** ***

Fam. Steiner
Via Mitterfeldweg 1
39030 Mitterolang / Valdaora di Mezzo
T / F +39 0474 496 693, M +39 342 362 44 71
olang.home@gmail.com, www.olang.com/elisabeth-neunhaeuserer
IT021106B4DGATRONK

| | | | | |
|-------------------------------------------------------|-----|--|--|--|
| Apartments | 1 | | | |
| Wohnfläche / Superficie / Living space m ² | 65 | | | |
| Personen / Persone / Persons | 3-6 | | | |
| Schlafraum / Camera da letto / Bedroom | 2 | | | |
| Badezimmer / Bagno / Bathroom | 3 | | | |



Apartments **Pramstaller** ***

Via Rindlweg 2
39030 Niederolang / Valdaora di Sotto
M +39 340 264 52 79
gertrudwi@yahoo.de, www.ferienwohnung-pramstaller.com
IT021106B4UPQYIBSK

| | | | | |
|-------------------------------------------------------|-----|--------|--|--|
| Apartments | 1 | 1 room | | |
| Wohnfläche / Superficie / Living space m ² | 50 | 13 | | |
| Personen / Persone / Persons | 4-5 | 1-2 | | |
| Schlafraum / Camera da letto / Bedroom | 1 | 1 | | |
| Badezimmer / Bagno / Bathroom | 1 | 1 | | |

Zimmer auch zusammen
mit Apartment möglich /
possibile usare la camera
insieme all'appartamento /
room also usable together
with the apartment



Apartments **Sabine** ***

Fam. Josef Egger
Via Kanonikus Gamper Weg 6
39030 Mitterolang / Valdaora di Mezzo
M +39 348 724 89 47
info@appartements-sabine.com, www.appartements-sabine.com
IT021106B4TCLWDMPC

| | | | | |
|-------------------------------------------------------|----|-----|-----|--|
| Apartments | 1 | 2 | 1 | |
| Wohnfläche / Superficie / Living space m ² | 28 | 30 | 56 | |
| Personen / Persone / Persons | 2 | 2-3 | 4-5 | |
| Schlafraum / Camera da letto / Bedroom | | 1 | 1 | |
| Badezimmer / Bagno / Bathroom | 1 | 1 | 1 | |



Apartments **Schatzer** ***

Carmen Schatzer
Via Brechelweg 1
39030 Mitterolang / Valdaora di Mezzo
M +39 349 321 81 59
info@appartements-schatzer.com, www.olang.com/appartements-schatzer
IT021106B46FEVNOZB

| | | | | |
|-------------------------------------------------------|-----|--|--|--|
| Apartments | 2 | | | |
| Wohnfläche / Superficie / Living space m ² | 60 | | | |
| Personen / Persone / Persons | 2-7 | | | |
| Schlafraum / Camera da letto / Bedroom | 2 | | | |
| Badezimmer / Bagno / Bathroom | 2 | | | |





Apartments **Sextnerhof** ***

Fam. Urthaler
Via Brechelweg 7
39030 Mitterolang / Valdaora di Mezzo
T / F +39 0474 496 037, M +39 349 545 84 15
info@sextnerhof.it, www.sextnerhof.it

IT021106B4WIHRZHHS

| | | | | |
|-------------------------------------------------------|----|----|--|--|
| Apartments | 2 | 2 | | |
| Wohnfläche / Superficie / Living space m ² | 55 | 60 | | |
| Personen / Persone / Persons | 4 | 4 | | |
| Schlafrum / Camera da letto / Bedroom | 2 | 2 | | |
| Badezimmer / Bagno / Bathroom | 2 | 2 | | |



Apartments **Sonnblick** ***

Elisabeth Neunhäuserer
Via Kerla Straße 7
39030 Mitterolang / Valdaora di Mezzo
T +39 0474 496 693, M +39 342 362 44 71
olang.home@gmail.com, www.appartment-olang.it

IT021106B4K2B25EO2

| | | | | |
|-------------------------------------------------------|-----|--|--|--|
| Apartments | 1 | | | |
| Wohnfläche / Superficie / Living space m ² | 59 | | | |
| Personen / Persone / Persons | 2-4 | | | |
| Schlafrum / Camera da letto / Bedroom | 1 | | | |
| Badezimmer / Bagno / Bathroom | 1 | | | |



Apartments **Steger** ***

Magdalena Steger
Via St.-Wolfgang-Weg 13
39030 Geiselsberg / Sorafurcia
T / F +39 0474 592 040
info@steger-appartements.it, www.steger-appartements.it

IT021106B48UEFSV17

| | | | | |
|-------------------------------------------------------|----|--|--|--|
| Apartments | 2 | | | |
| Wohnfläche / Superficie / Living space m ² | 60 | | | |
| Personen / Persone / Persons | 4 | | | |
| Schlafrum / Camera da letto / Bedroom | 2 | | | |
| Badezimmer / Bagno / Bathroom | 1 | | | |



Apartments **Steger Magdalena** ***

Via St.-Wolfgang-Weg 2
39030 Geiselsberg / Sorafurcia
T / F +39 0474 592 040
info@steger-appartements.it, www.steger-appartements.it

IT021106B4HAUTOHHM

| | | | | |
|-------------------------------------------------------|----|----|----|--|
| Apartments | 2 | 1 | 1 | |
| Wohnfläche / Superficie / Living space m ² | 45 | 50 | 70 | |
| Personen / Persone / Persons | 4 | 4 | 6 | |
| Schlafrum / Camera da letto / Bedroom | 2 | 2 | 3 | |
| Badezimmer / Bagno / Bathroom | 1 | 1 | 2 | |



Haus · Casa · House **Unterwassmair** ***

Via Aue 22
39030 Oberolang / Valdaora di Sopra
T +39 0474 496 004, M +39 348 451 01 72
flora.unterwassmair@rolmail.net

IT021106B47FI4UMFI

| | | | | |
|-------------------------------------------------------|----|----|----|--|
| Apartments | 1 | 2 | 1 | |
| Wohnfläche / Superficie / Living space m ² | 57 | 57 | 57 | |
| Personen / Persone / Persons | 3 | 4 | 5 | |
| Schlafrum / Camera da letto / Bedroom | 1 | 1 | 1 | |
| Badezimmer / Bagno / Bathroom | 1 | 1 | 1 | |



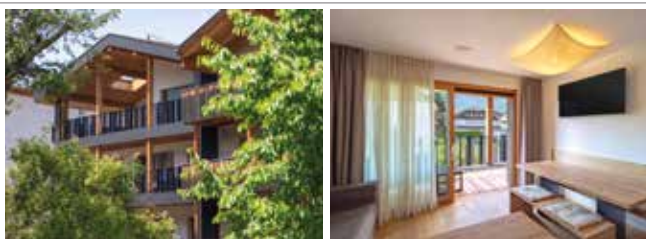
Apartments **Urthaler** ***

Werner Urthaler
St. Ägidius-Weg / Via S. Egidio 12
39030 Mitterolang / Valdaora di Mezzo
M +39 349 194 56 28
info@urthaler.org, www.urthaler.org

IT021106B4DL7Q649F

| | | | | |
|-------------------------------------------------------|-----|-----|-----|-----|
| Apartments | 2 | 1 | 1 | 1 |
| Wohnfläche / Superficie / Living space m ² | 43 | 52 | 73 | 90 |
| Personen / Persone / Persons | 2-4 | 2-4 | 4-7 | 6-9 |
| Schlafrum / Camera da letto / Bedroom | 1 | 1 | 2 | 3 |
| Badezimmer / Bagno / Bathroom | 1 | 2 | 2 | 3 |





Apartments **Villa Kriendl** ***

Hannes Denicolò
Piazza Floriani Platz 15a
39030 Mitterolang / Valdaora di Mezzo
M +39 347 658 01 49
villa@kriendl.it, www.kriendl.it
IT021106B4W682NNV2

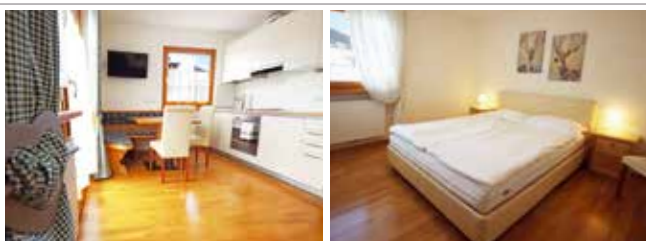
| | | | | |
|-------------------------------------------------------|-----|-----|--|--|
| Apartments | 2 | 2 | | |
| Wohnfläche / Superficie / Living space m ² | 50 | 60 | | |
| Personen / Persone / Persons | 2-6 | 2-6 | | |
| Schlafrum / Camera da letto / Bedroom | 2 | 2 | | |
| Badezimmer / Bagno / Bathroom | 1 | 1 | | |



Apartment **Alpenblick** **

Hubert Steiner
Rienzstraße / Via Rienza 13
39030 Niederolang / Valdaora di Sotto
M +39 379 141 64 28
info@residencealpenblick.com
IT021106B4Z512M7SR

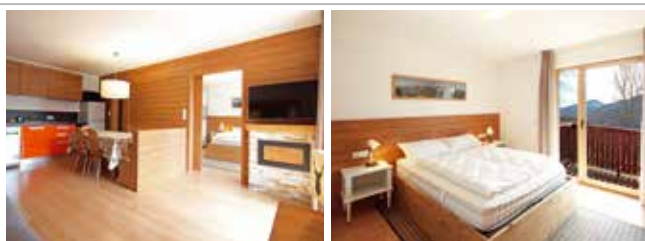
| | | | | |
|-------------------------------------------------------|-----|-----|--|--|
| Apartments | 1 | 3 | | |
| Wohnfläche / Superficie / Living space m ² | 23 | 45 | | |
| Personen / Persone / Persons | 1-2 | 2-5 | | |
| Schlafrum / Camera da letto / Bedroom | 1 | 2 | | |
| Badezimmer / Bagno / Bathroom | 1 | 1 | | |



Aurturist Appartement 137 **

Treyenweg / Via Treyen 3
39030 Mitterolang / Valdaora di Mezzo
T +39 0474 916 118
info@aurturist.com, www.aurturist.com
IT021106B469R43MWX

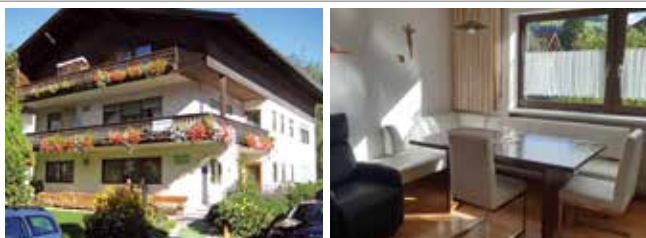
| | | | | |
|-------------------------------------------------------|-----|--|--|--|
| Apartments | 1 | | | |
| Wohnfläche / Superficie / Living space m ² | 46 | | | |
| Personen / Persone / Persons | 2-4 | | | |
| Schlafrum / Camera da letto / Bedroom | 1 | | | |
| Badezimmer / Bagno / Bathroom | 1 | | | |



Aurturist Appartement 197 **

Furkelstraße / Via Furcia 8
39030 Geiselsberg / Sorafurcia
T +39 0474 916 118
info@aurturist.com, www.aurturist.com
IT021106B4KM2WHI2D

| | | | | |
|-------------------------------------------------------|-----|--|--|--|
| Apartments | 1 | | | |
| Wohnfläche / Superficie / Living space m ² | 40 | | | |
| Personen / Persone / Persons | 1-3 | | | |
| Schlafrum / Camera da letto / Bedroom | 1 | | | |
| Badezimmer / Bagno / Bathroom | 1 | | | |



Apartments **Brunner** **

Marlene Maier
Piazza Peter Sigmayr Platz 19
39030 Mitterolang / Valdaora di Mezzo
M +39 348 371 24 43
app.brunner@gmail.com, www.olang.com/appbrunner
IT021106B4MRIE6EX6

| | | | | |
|-------------------------------------------------------|-----|--|--|--|
| Apartments | 1 | | | |
| Wohnfläche / Superficie / Living space m ² | 45 | | | |
| Personen / Persone / Persons | 2-5 | | | |
| Schlafrum / Camera da letto / Bedroom | 1 | | | |
| Badezimmer / Bagno / Bathroom | 1 | | | |



Apartment **Casa dei Sogni** **

Andrea Paoluzzi
Via Gezelgenweg 2
39030 Mitterolang / Valdaora di Mezzo
M +39 338 588 80 17
andreaester@icloud.com
IT021106B4OGTT8QG6

| | | | | |
|-------------------------------------------------------|----|--|--|--|
| Apartments | 1 | | | |
| Wohnfläche / Superficie / Living space m ² | 43 | | | |
| Personen / Persone / Persons | 4 | | | |
| Schlafrum / Camera da letto / Bedroom | 1 | | | |
| Badezimmer / Bagno / Bathroom | 1 | | | |





Apartments **Dagmar** **

Dagmar Erlacher
Via St.-Wolfgang-Weg 14
39030 Geiselsberg / Sorafurcia
M +39 348 440 05 35
dagmar@hotelkristall.it
IT021106B454LDIML4

| | | | | |
|-------------------------------------------------------|-----|--|--|--|
| Apartments | 2 | | | |
| Wohnfläche / Superficie / Living space m ² | 30 | | | |
| Personen / Persone / Persons | 2-4 | | | |
| Schlafraum / Camera da letto / Bedroom | 1 | | | |
| Badezimmer / Bagno / Bathroom | 1 | | | |



Apartment **Egger 5** **

Thomas Jungbluth
Via Eggerweg 5
39030 Geiselsberg / Sorafurcia
T +49 172 966 66 39
thomas@dr-jungbluth.de, www.egger5.com
IT021106B442H2ITYG

| | | | | |
|-------------------------------------------------------|-----|--|--|--|
| Apartments | 1 | | | |
| Wohnfläche / Superficie / Living space m ² | 190 | | | |
| Personen / Persone / Persons | 1-8 | | | |
| Schlafraum / Camera da letto / Bedroom | 4 | | | |
| Badezimmer / Bagno / Bathroom | 3 | | | |



Apartments **Govoni Mattia** **

Furkelstraße / Via Furcia 8
39030 Geiselsberg / Sorafurcia
M +39 348 641 63 29
mattiagovoni.studio@gmail.com
IT021106B4BZFXKNMB

| | | | | |
|-------------------------------------------------------|-----|--|--|--|
| Apartments | 1 | | | |
| Wohnfläche / Superficie / Living space m ² | 50 | | | |
| Personen / Persone / Persons | 1-4 | | | |
| Schlafraum / Camera da letto / Bedroom | 1 | | | |
| Badezimmer / Bagno / Bathroom | 1 | | | |



Apartments **Kofler** **

Fam. Kofler
Via Kerla Straße 7
39030 Mitterlang / Valdaora di Mezzo
M +39 349 066 21 84
geggo.kofler@rolmail.net, www.appartements-kofler.info
IT021106B4B2QATO5K

| | | | | |
|-------------------------------------------------------|-----|--|--|--|
| Apartments | 1 | | | |
| Wohnfläche / Superficie / Living space m ² | 59 | | | |
| Personen / Persone / Persons | 2-4 | | | |
| Schlafraum / Camera da letto / Bedroom | 1 | | | |
| Badezimmer / Bagno / Bathroom | 1 | | | |



Apartment **Kofler 2** **

Fam. Kofler
Via Mitterfeldweg 3
39030 Mitterlang / Valdaora di Mezzo
M +39 349 066 21 84
geggo.kofler@rolmail.net, www.appartements-kofler.info
IT021106B49JMAOBXS

| | | | | |
|-------------------------------------------------------|-----|--|--|--|
| Apartments | 1 | | | |
| Wohnfläche / Superficie / Living space m ² | 43 | | | |
| Personen / Persone / Persons | 2-4 | | | |
| Schlafraum / Camera da letto / Bedroom | 1 | | | |
| Badezimmer / Bagno / Bathroom | 1 | | | |



Apartments **Lanz Maria** **

Gassl 17
39030 Geiselsberg / Sorafurcia
M +39 392 340 67 04
app.lanzmaria@gmail.com
IT021106B47IDGR9Z4

| | | | | |
|-------------------------------------------------------|-----|-----|--|--|
| Apartments | 1 | 1 | | |
| Wohnfläche / Superficie / Living space m ² | 70 | 70 | | |
| Personen / Persone / Persons | 3-5 | 4-6 | | |
| Schlafraum / Camera da letto / Bedroom | 2 | 2 | | |
| Badezimmer / Bagno / Bathroom | 1 | 1 | | |





Apartments Lasta Schuster Frieda **

Via Aue 29
39030 Oberolang / Valdaora di Sopra
T +39 0474 496 198, M +39 340 377 36 82
friedalasta@hotmail.com, www.olang.com/lasta_frieda
IT021106B4KD678WQ6

| | | | | |
|-------------------------------------------------------|-----|--|--|--|
| Apartments | 1 | | | |
| Wohnfläche / Superficie / Living space m ² | 80 | | | |
| Personen / Persone / Persons | 4-8 | | | |
| Schlafrum / Camera da letto / Bedroom | 2-3 | | | |
| Badezimmer / Bagno / Bathroom | 2 | | | |



Apartments Mair **

Philipp Mair
Via Pichl Weg 3
39030 Mitterolang / Valdaora di Mezzo
M +39 348 349 77 99
apartments.an.mair@gmail.com, www.apartkronplatz.com
IT021106B445XJ58V5

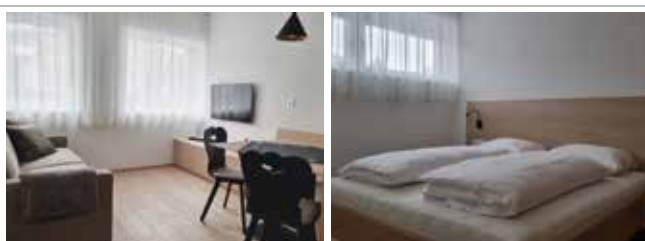
| | | | | |
|-------------------------------------------------------|-----|-----|--|--|
| Apartments | 1 | 1 | | |
| Wohnfläche / Superficie / Living space m ² | 43 | 61 | | |
| Personen / Persone / Persons | 2-4 | 4-6 | | |
| Schlafrum / Camera da letto / Bedroom | 1 | 2 | | |
| Badezimmer / Bagno / Bathroom | 1 | 1 | | |



Apartments Moretti Daniela **

Daniela Moretti
Piazza Floriani Platz 17
39030 Mitterolang / Valdaora di Mezzo
M +39 333 230 06 05
dmoretti@firenze.cna.it
IT021106B4YLZVKUJ3

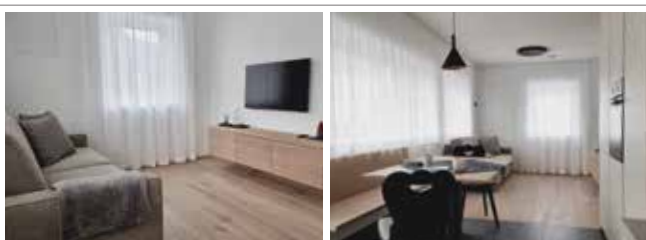
| | | | | |
|-------------------------------------------------------|----|--|--|--|
| Apartments | 1 | | | |
| Wohnfläche / Superficie / Living space m ² | 60 | | | |
| Personen / Persone / Persons | 4 | | | |
| Schlafrum / Camera da letto / Bedroom | 1 | | | |
| Badezimmer / Bagno / Bathroom | 1 | | | |



Apartments Mountain Meadows R **

Robert Messner
Piazza Peter Sigmayr Platz 6A
39030 Mitterolang / Valdaora di Mezzo
M +39 340 424 15 53
ve.mess@yahoo.de
IT021106C237N2TK46

| | | | | |
|-------------------------------------------------------|-----|-----|--|--|
| Apartments | 1 | 1 | | |
| Wohnfläche / Superficie / Living space m ² | 45 | 55 | | |
| Personen / Persone / Persons | 2-4 | 2-5 | | |
| Schlafrum / Camera da letto / Bedroom | 2 | 3 | | |
| Badezimmer / Bagno / Bathroom | 1 | 1 | | |



Apartments Mountain Meadows V **

Veronika Messner
Piazza Peter Sigmayr Platz 6A
39030 Mitterolang / Valdaora di Mezzo
M +39 340 424 15 53
ve.mess@yahoo.de
IT021106C2UNDUH6L3 / IT021106C2G3B4UJAS

| | | | | |
|-------------------------------------------------------|----|-----|--|--|
| Apartments | 1 | 1 | | |
| Wohnfläche / Superficie / Living space m ² | 43 | 53 | | |
| Personen / Persone / Persons | 2 | 2-5 | | |
| Schlafrum / Camera da letto / Bedroom | 2 | 3 | | |
| Badezimmer / Bagno / Bathroom | 1 | 1 | | |



Apartments Mutschlechner **

Edith Astner Mutschlechner
Erlenweg / Via Ontani 3
39030 Niederolang / Valdaora di Sotto
M +39 346 222 24 05
pension.peintner@gmail.com
IT021106B47YV3RJVA

| | | | | |
|-------------------------------------------------------|----|----|--|--|
| Apartments | 2 | 1 | | |
| Wohnfläche / Superficie / Living space m ² | 40 | 50 | | |
| Personen / Persone / Persons | 2 | 4 | | |
| Schlafrum / Camera da letto / Bedroom | 1 | 1 | | |
| Badezimmer / Bagno / Bathroom | 1 | 1 | | |





Apartments **Nomis** **

Widumweg / Via della Canonica 2
39030 Oberolant / Valdaora di Sopra
M +39 340 338 27 96
info@nomis.bz, www.nomis.bz
IT021106B4QQ3PKJTH

| | | | | | |
|-------------------------------------------------------|-----|-----|-----|--|--|
| Apartments | 1 | 1 | 2 | | |
| Wohnfläche / Superficie / Living space m ² | 48 | 52 | 54 | | |
| Personen / Persone / Persons | 2-4 | 2-5 | 2-6 | | |
| Schlafraum / Camera da letto / Bedroom | 1 | 2 | 2 | | |
| Badezimmer / Bagno / Bathroom | 1 | 1 | 1 | | |



Apartments **Nomis Nature** **

Kirchgasse / Vicolo della Chiesa 17
39030 Oberolant / Valdaora di Sopra
M +39 340 338 27 96
info@nomis.bz, www.nomis.bz
IT021106B4S2HCWIV

| | | | | | |
|-------------------------------------------------------|-----|--|--|--|--|
| Apartments | 2 | | | | |
| Wohnfläche / Superficie / Living space m ² | 47 | | | | |
| Personen / Persone / Persons | 2-3 | | | | |
| Schlafraum / Camera da letto / Bedroom | 2 | | | | |
| Badezimmer / Bagno / Bathroom | 1 | | | | |



Apartments **Obojes** **

Markus Obojes
Bahnhofstraße / Via Stazione 6
39030 Mitterolant / Valdaora di Mezzo
M +39 340 189 55 92
info@obojes.it
IT021106B4EVS15A40

| | | | | | |
|-------------------------------------------------------|----|-----|--|--|--|
| Apartments | 2 | 2 | | | |
| Wohnfläche / Superficie / Living space m ² | 42 | 60 | | | |
| Personen / Persone / Persons | 2 | 2-4 | | | |
| Schlafraum / Camera da letto / Bedroom | 1 | 1 | | | |
| Badezimmer / Bagno / Bathroom | 1 | 1 | | | |



Apartments **Schuster Emma** **

Oberrain 8
39030 Niederolant / Valdaora di Sotto
T +39 0474 496 152
appschuster@yahoo.de
IT021106B4K7QJ3U6P

| | | | | | |
|-------------------------------------------------------|-----|-----|--|--|--|
| Apartments | 1 | 1 | | | |
| Wohnfläche / Superficie / Living space m ² | 39 | 52 | | | |
| Personen / Persone / Persons | 2-3 | 2-5 | | | |
| Schlafraum / Camera da letto / Bedroom | 1 | 2 | | | |
| Badezimmer / Bagno / Bathroom | 1 | 1 | | | |



Haus · Casa · House **Simona** **

Angelo Ramagini
Furkelstraße / Via Furcia 8
39030 Geiselsberg / Sorafurcia
M +39 338 446 78 69
angelo.ramagini@gmail.com
IT021106B4CIS200I3

| | | | | | |
|-------------------------------------------------------|-----|--|--|--|--|
| Apartments | 1 | | | | |
| Wohnfläche / Superficie / Living space m ² | 62 | | | | |
| Personen / Persone / Persons | 4-5 | | | | |
| Schlafraum / Camera da letto / Bedroom | 1 | | | | |
| Badezimmer / Bagno / Bathroom | 1 | | | | |



Apartments **House Tirol** *

Romolo Starita
Via Mayerhofenweg 4
39030 Niederolant / Valdaora di Sotto
M +39 333 566 92 13
studio.starita@yahoo.com
IT021106B48EINBREU

| | | | | | |
|-------------------------------------------------------|-----|--|--|--|--|
| Apartments | 1 | | | | |
| Wohnfläche / Superficie / Living space m ² | 48 | | | | |
| Personen / Persone / Persons | 2-4 | | | | |
| Schlafraum / Camera da letto / Bedroom | 1 | | | | |
| Badezimmer / Bagno / Bathroom | 1 | | | | |





Apartments **Bulandhof** ⭐⭐⭐⭐

Fam. Matthias Monthaler
 Sallastraße / Via Salla 3
 39030 Oberolanz / Valdaora di Sopra
 M +39 329 750 65 88
 info@bulandhof.it, www.bulandhof.it
 IT021106B5FAS9KTXD

| | | | | | |
|-------------------------------------------------------|-----|----|----|----|-----|
| Apartments | 1 | 1 | 1 | 1 | 1 |
| Wohnfläche / Superficie / Living space m ² | 48 | 55 | 58 | 58 | 98 |
| Personen / Persone / Persons | 2-4 | 4 | 4 | 4 | 6-8 |
| Schlafraum / Camera da letto / Bedroom | 1 | 2 | 2 | 2 | 3 |
| Badezimmer / Bagno / Bathroom | 1 | 1 | 2 | 2 | 2 |



Apartments **Färberhof** ⭐⭐⭐⭐

Fam. Pallhuber Hofer
 Via Mitterfeldweg 18, 39030 Mitterolanz / Valdaora di Mezzo
 T / F +39 0474 496 407, M +39 349 477 60 11
 info@faerberhof.it, www.faerberhof.it
 IT021106B5VU8FCTOZ

| | | | | |
|-------------------------------------------------------|-----|-----|--|--|
| Apartments | 4 | 1 | | |
| Wohnfläche / Superficie / Living space m ² | 35 | 56 | | |
| Personen / Persone / Persons | 2-3 | 4-5 | | |
| Schlafraum / Camera da letto / Bedroom | | 1 | | |
| Badezimmer / Bagno / Bathroom | 1 | 1 | | |



auf Anfrage / su richiesta / on request:



Apartments **Lerchnhof** ⭐⭐⭐⭐

Fam. Oberparleiter
 Geiselsberger Straße / Via Sorafurcia 12
 39030 Mitterolanz / Valdaora di Mezzo
 M +39 339 142 02 43
 info@lerchnhof.com, www.lerchnhof.com
 IT021106B5DH5FN8E9

| | | | | |
|-------------------------------------------------------|----|-----|----|-----|
| Apartments | 1 | 1 | 1 | 2 |
| Wohnfläche / Superficie / Living space m ² | 52 | 53 | 58 | 73 |
| Personen / Persone / Persons | 4 | 2-3 | 4 | 4-5 |
| Schlafraum / Camera da letto / Bedroom | 2 | 1 | 2 | 2 |
| Badezimmer / Bagno / Bathroom | 2 | 2 | 2 | 2 |



Apartments **Liebhartherhof** ⭐⭐⭐⭐

Fam. Steinmair
 Via Mitterfeldweg 21
 39030 Mitterolanz / Valdaora di Mezzo
 M +39 340 775 00 48
 info@liebhartherhof.it, www.liebhartherhof.it
 IT021106B54CANL5YX

| | | | | |
|-------------------------------------------------------|-----|-----|-----|--|
| Apartments | 2 | 2 | 1 | |
| Wohnfläche / Superficie / Living space m ² | 30 | 50 | 60 | |
| Personen / Persone / Persons | 2-4 | 4-6 | 4-5 | |
| Schlafraum / Camera da letto / Bedroom | 1 | 2 | 2 | |
| Badezimmer / Bagno / Bathroom | 1 | 2 | 1 | |



Apartments **Sannerhof** ⭐⭐⭐⭐

Fam. Markus Agstner
 Via Stöckl Weg 2
 39030 Mitterolanz / Valdaora di Mezzo
 T +39 0474 496 468, +39 0474 495 766
 app.sannerhof@rolmail.net, www.sannerhof.it
 IT021106B5K1XHC8PL

| | | | | | |
|-------------------------------------------------------|----|----|----|-----|-----|
| Apartments | 1 | 1 | 1 | 1 | 1 |
| Wohnfläche / Superficie / Living space m ² | 33 | 41 | 42 | 57 | 61 |
| Personen / Persone / Persons | 2 | 2 | 2 | 4-6 | 3-6 |
| Schlafraum / Camera da letto / Bedroom | 1 | 1 | 1 | 2 | 3 |
| Badezimmer / Bagno / Bathroom | 1 | 1 | 1 | 1 | 2 |



auf Anfrage / su richiesta / on request:



Apartments **Unterhölzlhof** ⭐⭐⭐⭐

Fam. Arnold
 Via Greitweg 2, 39030 Oberolanz / Valdaora di Sopra
 M +39 346 606 07 60
 info@unterhoelzlhof.it, info@chalet-anima.it
www.unterhoelzlhof.it, www.chalet-anima.it
 IT021106B58E2N60RC

| | | | | | |
|-------------------------------------------------------|-----|-----|-----|-----|--------|
| Apartments | 1 | 1 | 1 | 1 | Chalet |
| Wohnfläche / Superficie / Living space m ² | 43 | 47 | 57 | 57 | 70 |
| Personen / Persone / Persons | 2-4 | 3-5 | 4-6 | 4-6 | 2-6 |
| Schlafraum / Camera da letto / Bedroom | 1 | 1 | 2 | 2 | 2 |
| Badezimmer / Bagno / Bathroom | 1 | 1 | 1 | 1 | 2 |



Schwimtteich / laghetto balneabile / swimming pond



Chalet Rueperhof

Fam. Hainz
Via Prackenberg 2
39030 Geiselsberg / Sorafurcia
M +39 348 734 37 79
info@chalet-rueper.com, www.chalet-rueper.com

IT021106B5MTTFHDZL

| | | | | |
|-------------------------------------------------------|-----|--|--|--|
| Chalets | 2 | | | |
| Wohnfläche / Superficie / Living space m ² | 100 | | | |
| Personen / Persone / Persons | 2-8 | | | |
| Schlafrum / Camera da letto / Bedroom | 2 | | | |
| Badezimmer / Bagno / Bathroom | 2 | | | |



auf Anfrage / su richiesta / on request:



Apartments Gandlerhof

Fam. Felder
Via Herman-von-Gilm-Weg 19
39030 Mitterolang / Valdaora di Mezzo
M +39 345 048 71 16
info@gandlerhof.it, www.gandlerhof.it

IT021106B5766CJJD

| | | | | | |
|-------------------------------------------------------|-----|-----|-----|-----|-----|
| Apartments | 1 | 1 | 1 | 1 | 1 |
| Wohnfläche / Superficie / Living space m ² | 38 | 46 | 54 | 58 | 61 |
| Personen / Persone / Persons | 2-4 | 2-4 | 2-4 | 4-6 | 4-6 |
| Schlafrum / Camera da letto / Bedroom | 1 | 1 | 1 | 2 | 2 |
| Badezimmer / Bagno / Bathroom | 1 | 1 | 1 | 2 | 2 |



Apartments Häuslerhof

Marion Niederkofler
Via Prackenberg 1
39030 Geiselsberg / Sorafurcia
M +39 379 354 94 81
office@haeuslerhof.it, www.haeuslerhof.it

| | | | | |
|-------------------------------------------------------|----|-----|-----|--|
| Apartments | 1 | 1 | 2 | |
| Wohnfläche / Superficie / Living space m ² | 38 | 53 | 63 | |
| Personen / Persone / Persons | 2 | 2-4 | 4-6 | |
| Schlafrum / Camera da letto / Bedroom | 1 | 2 | 2 | |
| Badezimmer / Bagno / Bathroom | 1 | 1 | 1 | |

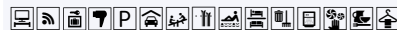


Apartments Henglerhof

Eduard Monthaler
Dorfstraße / Via del Borgo 17
39030 Oberolang / Valdaora di Sopra
T +39 0474 496 016, M +39 347 642 25 21
info@henglerhof.com, www.henglerhof.com

IT021106B5ZFVRW57B

| | | | | |
|-------------------------------------------------------|-----|----|----|--|
| Apartments | 1 | 1 | 1 | |
| Wohnfläche / Superficie / Living space m ² | 45 | 65 | 65 | |
| Personen / Persone / Persons | 2-3 | 4 | 4 | |
| Schlafrum / Camera da letto / Bedroom | 1 | 2 | 2 | |
| Badezimmer / Bagno / Bathroom | 1 | 1 | 2 | |



Apartments Holzerhof

Fam. Hofer
Via Waldhöfe 1
39030 Niederolang / Valdaora di Sotto
M +39 348 395 36 75
info@app-holzer.com, www.app-holzer.com

IT021106B5CQDF5HVK

| | | | | |
|-------------------------------------------------------|-----|-----|--|--|
| Apartments | 1 | 2 | | |
| Wohnfläche / Superficie / Living space m ² | 40 | 63 | | |
| Personen / Persone / Persons | 2-4 | 2-6 | | |
| Schlafrum / Camera da letto / Bedroom | 1 | 2 | | |
| Badezimmer / Bagno / Bathroom | 1 | 1 | | |



1 Wohnraum mit Küche pro Apartment / 1 soggiorno con cucina per appartamento / 1 living room with kitchen per flat



Kerschbama

Fam. Wieser
Römerweg / Via dei Romani 7
39030 Niederolang / Valdaora di Sotto
M +39 347 597 24 95
info@kerschbama.com, www.kerschbama.com

CIN: IT021106B56H8C7BIR

| | | | | |
|-------------------------------------------------------|-----|-----|--|--|
| Apartments | 1 | 1 | | |
| Wohnfläche / Superficie / Living space m ² | 44 | 73 | | |
| Personen / Persone / Persons | 1-4 | 2-7 | | |
| Schlafrum / Camera da letto / Bedroom | 1 | 3 | | |
| Badezimmer / Bagno / Bathroom | 1 | 2 | | |





Apartments **Kranebitterhof**

Fam. Karl-Heinz Pineider
 Furlkelstraße / Via Furcia 3
 39030 Geiselsberg / Sorafurcia
 T / F +39 0474 592 027, M +39 339 623 40 75
 info@kranebitterhof.it, www.kranebitterhof.it
 IT021106B5QOMMD7RS

| | | | | |
|-------------------------------------------------------|-----|-----|--|--|
| Apartments | 1 | 2 | | |
| Wohnfläche / Superficie / Living space m ² | 50 | 53 | | |
| Personen / Persone / Persons | 2-4 | 4-6 | | |
| Schlafrum / Camera da letto / Bedroom | 1 | 2 | | |
| Badezimmer / Bagno / Bathroom | 1 | 1 | | |



Apartments **Kühbachhof**

Stefan Hainz
 Via Kohlscherm Weg 4
 39030 Niederolang / Valdaora di Sotto
 M +39 347 926 62 06
 info@kuehbachhof.com, www.kuehbachhof.com
 IT021106B52PTA6WO

| | | | | |
|-------------------------------------------------------|-----|-----|-----|--|
| Apartments | 1 | 1 | 1 | |
| Wohnfläche / Superficie / Living space m ² | 45 | 48 | 68 | |
| Personen / Persone / Persons | 2-4 | 2-4 | 4-6 | |
| Schlafrum / Camera da letto / Bedroom | 1 | 1 | 2 | |
| Badezimmer / Bagno / Bathroom | 1 | 1 | 1 | |



Apartments **Mittermühlbacherhof**

Klaus Jud
 Gassl 2a
 39030 Geiselsberg / Sorafurcia
 T +39 0474 498 510, M +39 348 246 69 33
 info@mittermuehlbacherhof.com, www.mittermuehlbacherhof.com
 IT021106B56KHVEKDM

| | | | | |
|-------------------------------------------------------|-----|-----|-----|--|
| Apartments | 1 | 1 | 1 | |
| Wohnfläche / Superficie / Living space m ² | 40 | 45 | 45 | |
| Personen / Persone / Persons | 2-4 | 2-4 | 2-5 | |
| Schlafrum / Camera da letto / Bedroom | 1 | 2 | 2 | |
| Badezimmer / Bagno / Bathroom | 1 | 1 | 1 | |



Apartments **Niedereggerhof**

Martin Auer
 Via Egger Weg 18
 39030 Geiselsberg / Sorafurcia
 T +39 0474 592 029
 info@niedereggerhof.it, www.niedereggerhof.it
 IT021106B53J5UEMDS

| | | | | |
|-------------------------------------------------------|-----|-----|--|--|
| Apartments | 3 | 1 | | |
| Wohnfläche / Superficie / Living space m ² | 30 | 40 | | |
| Personen / Persone / Persons | 2-4 | 2-4 | | |
| Schlafrum / Camera da letto / Bedroom | 1 | 1 | | |
| Badezimmer / Bagno / Bathroom | 1 | 1 | | |



im Winter / in inverno / in winter: auf Anfrage / su richiesta / on request:



Apartments **Oberhölzlhof**

Dietmar Pönbacher
 Via Böden-Strasse 5
 39030 Oberolang / Valdaora di Sopra
 M +39 347 257 48 65
 info@oberhoelzlhof.info, www.oberhoelzlhof.info
 IT021106B5QIOLR3PD

| | | | | |
|-------------------------------------------------------|-----|-----|--|--|
| Apartments | 2 | 2 | | |
| Wohnfläche / Superficie / Living space m ² | 38 | 56 | | |
| Personen / Persone / Persons | 2-4 | 2-6 | | |
| Schlafrum / Camera da letto / Bedroom | 1 | 1 | | |
| Badezimmer / Bagno / Bathroom | 1 | 1 | | |



auf Anfrage / su richiesta / on request:



Apartments **Oberpichlhof**

Jud Alfred
 Furlkelstraße / Via Furcia 18
 39030 Geiselsberg / Sorafurcia
 T +39 0474 832 061, F +39 0474 832 062
 info@oberpichl.com, www.oberpichl.com
 IT021106B5SS59V5A4

| | | | | |
|-------------------------------------------------------|-----|-----|-----|------|
| Apartments | 1 | 1 | 2 | 1 |
| Wohnfläche / Superficie / Living space m ² | 38 | 44 | 65 | 77 |
| Personen / Persone / Persons | 4-5 | 4-6 | 4-6 | 6-10 |
| Schlafrum / Camera da letto / Bedroom | 2 | 2 | 2 | 3 |
| Badezimmer / Bagno / Bathroom | 2 | 2 | 2 | 3 |





Apartments **Scharmashof** ****

Fam. Jud Salcher
Sallastraße / Via Salla 2
39030 Oberolang / Valdaora di Sopra
T +39 0474 496 371
info@scharmashof.com, www.scharmashof.it
IT021106B5HV2MFPCW

| | | | | | |
|-------------------------------------------------------|-----|-----|--|--|--|
| Apartments | 1 | 1 | | | |
| Wohnfläche / Superficie / Living space m ² | 74 | 100 | | | |
| Personen / Persone / Persons | 2-4 | 4-7 | | | |
| Schlafrum / Camera da letto / Bedroom | 2 | 3 | | | |
| Badezimmer / Bagno / Bathroom | 2 | 2 | | | |



Sorafurcia Lodge ****

Fam. Brunner
Via Prackenweg 4
39030 Geiselsberg / Sorafurcia
M +39 349 325 19 95
info@sorafurcia-lodge.it, www.sorafurcia-lodge.it
CIN: IT021106B53BW4ENOS

| | | | | | |
|-------------------------------------------------------|------|--|--|--|--|
| Chalet | 1 | | | | |
| Wohnfläche / Superficie / Living space m ² | 435 | | | | |
| Personen / Persone / Persons | 2-12 | | | | |
| Schlafrum / Camera da letto / Bedroom | 5 | | | | |
| Badezimmer / Bagno / Bathroom | 5 | | | | |



Apartments **Sottla** ****

Rodelbahnweg / Via dello Slittino 13
39030 Oberolang / Valdaora di Sopra
M +39 351 403 90 30
info@sottla.com, www.sottla.com
IT021106B5GLEFJHO2

| | | | | | |
|-------------------------------------------------------|-----|-----|--|--|--|
| Apartments | 2 | 2 | | | |
| Wohnfläche / Superficie / Living space m ² | 50 | 55 | | | |
| Personen / Persone / Persons | 2-4 | 5-6 | | | |
| Schlafrum / Camera da letto / Bedroom | 2 | 2 | | | |
| Badezimmer / Bagno / Bathroom | 1 | 1 | | | |



Apartments **Vordermoar** ****

Fam. Thomas Pörnbacher
Bahnhofstraße / Via Stazione 6a
39030 Mitterolang / Valdaora di Mezzo
M +39 348 354 77 48
info@vordermoar.it, www.vordermoar.it
IT021106B59DVQXLSB

| | | | | | |
|-------------------------------------------------------|-----|-----|-----|-----|-----|
| Apartments | 1 | 1 | 1 | 1 | 1 |
| Wohnfläche / Superficie / Living space m ² | 45 | 50 | 40 | 42 | 30 |
| Personen / Persone / Persons | 2-5 | 2-5 | 1-4 | 1-4 | 1-4 |
| Schlafrum / Camera da letto / Bedroom | 2 | 2 | 1 | 1 | 1 |
| Badezimmer / Bagno / Bathroom | 1 | 1 | 1 | 1 | 1 |



auf Anfrage / su richiesta / on request:



Apartments **Bad Bergfallerhof** ****

Fabian Plankensteiner
Hinterbergstraße / Via Hinterberg 10
39030 Geiselsberg / Sorafurcia
M +39 348 362 60 02
info@badbergfallerhof.com, www.badbergfallerhof.com
IT021106B5WJJCOWAP6

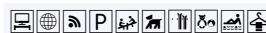
| | | | | | |
|-------------------------------------------------------|----|-----|--|--|--|
| Apartments | 2 | 2 | | | |
| Wohnfläche / Superficie / Living space m ² | 40 | 50 | | | |
| Personen / Persone / Persons | 2 | 2-4 | | | |
| Schlafrum / Camera da letto / Bedroom | 1 | 1 | | | |
| Badezimmer / Bagno / Bathroom | 1 | 1 | | | |



Apartments **Bigraberhof** ****

Hubert Oberegger
Hinterbergstraße / Via Hinterberg 2
39030 Geiselsberg / Sorafurcia
T +39 0474 592 062
info@bigraberhof.com, www.bigraberhof.com
IT021106B54V53VLMB

| | | | | | |
|-------------------------------------------------------|-----|-----|-----|--|--|
| Apartments | 2 | 1 | 1 | | |
| Wohnfläche / Superficie / Living space m ² | 29 | 30 | 39 | | |
| Personen / Persone / Persons | 1-3 | 2-4 | 2-5 | | |
| Schlafrum / Camera da letto / Bedroom | 1 | 1 | 1 | | |
| Badezimmer / Bagno / Bathroom | 1 | 1 | 1 | | |





Apartments **Chalet Oberegger** ☼☼

Steurer Sabine
 Via Egger Weg 21
 39030 Geiselsberg / Sorafurcia
 M +39 347 522 01 22
 info@obereggeralm.com, www.obereggeralm.com

IT021106B5W48UENIG

| | | | | |
|-------------------------------------------------------|-----|--|--|--|
| Apartments | 1 | | | |
| Wohnfläche / Superficie / Living space m ² | 120 | | | |
| Personen / Persone / Persons | 5-7 | | | |
| Schlafrum / Camera da letto / Bedroom | 3 | | | |
| Badezimmer / Bagno / Bathroom | 2 | | | |



Residenz **Erschbaum** ☼☼

Günther Schatzer
 Bad Bergfall Weg / Via Bagni di Pervalle 2
 39030 Geiselsberg / Sorafurcia
 M +39 339 807 28 00
 info@erschbaum.com, www.erschbaum.com

IT021106B5MVNMLLM9

| | | | | |
|-------------------------------------------------------|----|----|--|--|
| Apartments | 2 | 3 | | |
| Wohnfläche / Superficie / Living space m ² | 40 | 70 | | |
| Personen / Persone / Persons | 3 | 6 | | |
| Schlafrum / Camera da letto / Bedroom | 1 | 2 | | |
| Badezimmer / Bagno / Bathroom | 1 | 1 | | |



Apartments **Huberhof** ☼☼

Peter Pörnbacher
 Piazza Peter Sigmayr Platz 11
 39030 Mitterolang / Valdaora di Mezzo
 T +39 0474 496 418, M + 349 096 09 60
 peterpoernbacher@yahoo.de
 IT021106B5ML4K6U5C

| | | | | |
|-------------------------------------------------------|-----|--|--|--|
| Apartments | 1 | | | |
| Wohnfläche / Superficie / Living space m ² | 50 | | | |
| Personen / Persone / Persons | 3-5 | | | |
| Schlafrum / Camera da letto / Bedroom | 2 | | | |
| Badezimmer / Bagno / Bathroom | 1 | | | |



Apartments **Jud Harald** ☼☼

Fam. Jud
 Via Kohlscherm Weg 3a
 39030 Niederolang / Valdaora di Sotto
 T / F +39 0474 496 170
 info@judharald.eu, www.pfarrwirt.bz/apartments
 IT021106B5F2S2F9ZS

| | | | | |
|-------------------------------------------------------|-----|-----|--|--|
| Apartments | 2 | 2 | | |
| Wohnfläche / Superficie / Living space m ² | 38 | 47 | | |
| Personen / Persone / Persons | 2-3 | 2-3 | | |
| Schlafrum / Camera da letto / Bedroom | 1 | 1 | | |
| Badezimmer / Bagno / Bathroom | 1 | 1 | | |



Apartments **Köfelehof** ☼☼

Ulrich Ladstätter
 Via Sallerstraße 9
 39030 Oberolng / Valdaora di Sopra
 M +39 349 713 94 07
 info@koefelehof.it, www.koefelehof.it
 IT021106B57TBBLWEW

| | | | | |
|-------------------------------------------------------|----|----|--|--|
| Apartments | 1 | 1 | | |
| Wohnfläche / Superficie / Living space m ² | 38 | 42 | | |
| Personen / Persone / Persons | 3 | 4 | | |
| Schlafrum / Camera da letto / Bedroom | 1 | 1 | | |
| Badezimmer / Bagno / Bathroom | 1 | 1 | | |



Apartments **Nassenwegerhof** ☼☼

Fam. Unterberger
 Rienzstraße / Via Rienza 11
 39030 Niederolng / Valdaora di Sotto
 T / F +39 0474 498 471
 info@nassenwegerhof.com, www.nassenwegerhof.com
 IT021106B5RIYNOTMA

| | | | | |
|-------------------------------------------------------|----|----|-----|--|
| Apartments | 1 | 1 | 2 | |
| Wohnfläche / Superficie / Living space m ² | 55 | 70 | 75 | |
| Personen / Persone / Persons | 4 | 6 | 4-6 | |
| Schlafrum / Camera da letto / Bedroom | 2 | 3 | 2 | |
| Badezimmer / Bagno / Bathroom | 1 | 1 | 1 | |





Apartments Obermairhof ☼☼

Fam. Wieland
In der Länge 2
39030 Niederolang / Valdaora di Sotto
M +39 348 067 39 10
info.obermairhof@gmail.com, www.obermairhof.bz
IT021106B5XHLYKEL5

| | | | | |
|-------------------------------------------------------|----|----|-----|-----|
| Apartments | 1 | 1 | 1 | 1 |
| Wohnfläche / Superficie / Living space m ² | 35 | 36 | 55 | 70 |
| Personen / Persone / Persons | 2 | 2 | 2-4 | 4-8 |
| Schlafrum / Camera da letto / Bedroom | 1 | 1 | 2 | 3 |
| Badezimmer / Bagno / Bathroom | 1 | 1 | 1 | 2 |



Apartments Perfila ☼☼

Georg Töchterle
Gassl 27
39030 Geiselsberg / Sorafurcia
T +39 0474 592 124, M +39 348 709 72 16
info@perfila.com, www.perfila.com
IT021106B5MZQYKRZ

| | | | | |
|-------------------------------------------------------|-----|-----|--|--|
| Apartments | 2 | 2 | | |
| Wohnfläche / Superficie / Living space m ² | 45 | 70 | | |
| Personen / Persone / Persons | 2-5 | 2-6 | | |
| Schlafrum / Camera da letto / Bedroom | 1 | 2 | | |
| Badezimmer / Bagno / Bathroom | 1 | 2 | | |



Apartments Schöneggerhof ☼☼

Fam. Marlene Zwischenbrugger
Via Brechelweg 8
39030 Mitterolang / Valdaora di Mezzo
T +39 0474 498 410, M +39 340 147 14 43
olang@hofurlaub.info, www.hofurlaub.info
IT021106B58GRKNXW8

| | | | | |
|-------------------------------------------------------|-----|-----|--|--|
| Apartments | 2 | 2 | | |
| Wohnfläche / Superficie / Living space m ² | 55 | 60 | | |
| Personen / Persone / Persons | 2-5 | 2-6 | | |
| Schlafrum / Camera da letto / Bedroom | 2 | 2 | | |
| Badezimmer / Bagno / Bathroom | 2 | 2 | | |



Apartments Unterhauserhof ☼☼

Armin Steurer
Via Hauser Weg 1
39030 Mitterolang / Valdaora di Mezzo
T +39 0474 496 204, F +39 0474 496 204
info@unterhauserhof.it, www.unterhauserhof.it
IT021106B58UNAU7YC

| | | | | |
|-------------------------------------------------------|-----|----|-----|--|
| Apartments | 1 | 1 | 1 | |
| Wohnfläche / Superficie / Living space m ² | 46 | 47 | 50 | |
| Personen / Persone / Persons | 2-4 | 4 | 4-5 | |
| Schlafrum / Camera da letto / Bedroom | 1 | 2 | 2 | |
| Badezimmer / Bagno / Bathroom | 2 | 2 | 2 | |



Almresidenz Unterrain zum Hartl ☼☼

Fam. Schatzer
Hinterbergstraße / Via Hinterberg 9
39030 Geiselsberg / Sorafurcia
T +39 0474 592 154, M +39 340 710 68 95
info@almresidenz-unterrain.com, www.almresidenz-unterrain.com
IT021106B5JFKJNRDX

| | | | | |
|-------------------------------------------------------|-----|-----|-----|-----|
| Apartments | 1 | 1 | 1 | 1 |
| Wohnfläche / Superficie / Living space m ² | 60 | 60 | 75 | 75 |
| Personen / Persone / Persons | 2-4 | 2-6 | 2-5 | 2-6 |
| Schlafrum / Camera da letto / Bedroom | 2 | 2 | 2 | 2 |
| Badezimmer / Bagno / Bathroom | 1 | 1 | 1 | 1 |



Apartments Kriendlhof ☼

Hanspeter Wieland
Via Mitterfeldweg 19
39030 Mitterolang / Valdaora di Mezzo
M +39 348 210 02 62
info@kriendlhof.com, www.kriendlhof.com
IT021106B5YLQJRVDR9

| | | | | |
|-------------------------------------------------------|-----|-----|-----|--|
| Apartments | 1 | 1 | 1 | |
| Wohnfläche / Superficie / Living space m ² | 42 | 48 | 50 | |
| Personen / Persone / Persons | 2-4 | 2-5 | 2-5 | |
| Schlafrum / Camera da letto / Bedroom | 1 | 1 | 1 | |
| Badezimmer / Bagno / Bathroom | 1 | 1 | 1 | |





Appartamenti **Oberriedlhof** ☼

Fam. Reden
 Via Riedl 2
 39030 Oberolang / Valdaora di Sopra
 T & F +39 0474 498 088
 info@oberriedlhof.it, www.oberriedlhof.it
 IT021106B5ASWU3STL

| | | | | |
|-------------------------------------------------------|----|-----|-----|--|
| Appartamenti | 1 | 1 | 3 | |
| Wohnfläche / Superficie / Living space m ² | 25 | 40 | 47 | |
| Personen / Persone / Persons | 2 | 2-4 | 2-4 | |
| Schlafrum / Camera da letto / Bedroom | 1 | 1 | 2 | |
| Badezimmer / Bagno / Bathroom | 1 | 1 | 1 | |



Appartamenti **Panzenbachhof** ☼

Fam. Felder
 Via Feldweg 21
 39030 Niederolang / Valdaora di Sotto
 M +39 345 048 71 16
 info@gandlerhof.it, www.gandlerhof.it
 IT021106B562E9LGES

| | | | | |
|-------------------------------------------------------|-------|-------|--|--|
| Appartamenti | 2 | 2 | | |
| Wohnfläche / Superficie / Living space m ² | 41-48 | 60-67 | | |
| Personen / Persone / Persons | 2-4 | 5-6 | | |
| Schlafrum / Camera da letto / Bedroom | 1 | 2 | | |
| Badezimmer / Bagno / Bathroom | 1 | 1 | | |



Appartamenti **Pfarrbäckhof** ☼

Fam. Aichner
 Via Ried 3
 39030 Niederolang / Valdaora di Sotto
 M +39 346 231 75 15
 pfarrbaeckhof@gmail.com, www.olang.com/pfarrbaeckhof
 IT021106B59HWGMVKG

| | | | | |
|-------------------------------------------------------|-----|--|--|--|
| Appartamenti | 4 | | | |
| Wohnfläche / Superficie / Living space m ² | 65 | | | |
| Personen / Persone / Persons | 2-5 | | | |
| Schlafrum / Camera da letto / Bedroom | 2 | | | |
| Badezimmer / Bagno / Bathroom | 1 | | | |



Appartamenti **Posterhof** ☼

Paul Brunner
 Römerweg / Via Romana 9
 39030 Niederolang / Valdaora di Sotto
 T +39 0474 496 543
 paulbrunner1984@gmail.com
 IT021106B51GT2Q54H

| | | | | |
|-------------------------------------------------------|----|-----|--|--|
| Appartamenti | 1 | 1 | | |
| Wohnfläche / Superficie / Living space m ² | 40 | 50 | | |
| Personen / Persone / Persons | 2 | 2-3 | | |
| Schlafrum / Camera da letto / Bedroom | 1 | 1 | | |
| Badezimmer / Bagno / Bathroom | 1 | 1 | | |



Appartamenti **Urthalerhof** ☼

Fam. Willeit / Klapfer
 Via Kohlscherm Weg 11
 39030 Niederolang / Valdaora di Sotto
 M +39 348 542 61 83
 willeit.theresia@gmail.com
 IT021106B5IVSCLJY4

| | | | | |
|-------------------------------------------------------|-----|-----|--|--|
| Appartamenti | 1 | 1 | | |
| Wohnfläche / Superficie / Living space m ² | 29 | 48 | | |
| Personen / Persone / Persons | 2-3 | 4-5 | | |
| Schlafrum / Camera da letto / Bedroom | 1 | 3 | | |
| Badezimmer / Bagno / Bathroom | 1 | 2 | | |





Reservierung

Richte deine Reservierungswünsche direkt an das Haus deiner Wahl. Es ist üblich bei der Zimmerreservierung eine Anzahlung zu entrichten, die vom Betrieb festgesetzt wird und ungefähr dem Preis von drei Tagen Aufenthalt entspricht. Die Anzahlung garantiert die Einhaltung der Reservierung und wird im Falle einer einseitigen Absage durch den Gast nicht rückerstattet.

Prenotazioni

Indirizza la tua prenotazione direttamente all'esercizio prescelto. È uso che per la prenotazione della camera venga richiesta una caparra dall'esercizio (equivalente a ca. tre giorni di soggiorno) per garantire il contratto di locazione e non verrà rimborsata in caso di disdetta unilaterale da parte dell'ospite.

Reservation

Room reservations have to be effected directly with the accommodation of your choice. In order to complete the reservation it is customary to pay a deposit, which amount is determined by the accommodation and corresponds approx. to three days of stay. The deposit will guarantee the reservation and will not be refunded in case of unilateral cancellation by the guest.

Saisonzeiten · Stagioni · Seasons

| | WINTER · INVERNO · WINTER | SOMMER · ESTATE · SUMMER |
|--------------------------------------------------|---------------------------|--------------------------|
| Vorsaison · Bassa stagione · Preseason | 28.11. - 19.12.2026 | |
| Hochsaison · Alta stagione · High season | 19.12. - 09.01.2027 | |
| Nebensaison · Bassa stagione · Low season | | 12.04. - 19.06.2027 |
| Saison · Stagione · Season | 09.01. - 30.01.2027 | 19.06. - 23.07.2027 |
| Hochsaison · Alta stagione · High season | 30.01. - 13.02.2027 | 23.07. - 21.08.2027 |
| Saison · Stagione · Season | 13.02. - 06.03.2027 | 21.08. - 18.09.2027 |
| Nebensaison · Bassa stagione · Low season | 06.03. - 11.04.2027 | 18.09. - 27.11.2027 |

Die Einstufung

von ★ bis ★★★★★ entspricht dem internationalen Standard. Die Einstufung der privaten Gästezimmer / Ferienwohnungen erfolgt von ★ bis ★★★★★ (Sonne) bzw. der Zimmer in Betrieben mit Urlaub auf dem Bauernhof von ☼ bis ☼☼☼☼☼ (Blumen).

★★★★ und ★★★★★ - für jene Betriebe innerhalb der einzelnen Kategorien, die sich auch dadurch auszeichnen, dass sie ein besonders hohes Maß an Dienstleistungen bieten, wurde der Begriff „Superior“ eingeführt.

- ★ eine „Sonne“ kennzeichnet einfache, jedoch gepflegte Unterkünfte für preisgünstigere Aufenthalte.
- ★★ zwei „Sonne“ kennzeichnen angenehme Unterkünfte im mittleren, gutbürgerlichen Preisniveau.
- ★★★ drei „Sonne“ kennzeichnen Komfortunterkünfte; das Haus verfügt über zusätzliche Einrichtungen, die Ihren Aufenthalt noch angenehmer gestalten.
- ★★★★ & ★★★★★ in der Kategorie vier / fünf „Sonne“ wird außerdem vorausgesetzt, dass im Gästezimmer, bzw. in der Ferienwohnung ein räumlich getrennter, beheizbarer Sanitärbereich mit Dusche oder Bad und WC vorhanden ist.
- ☼ eine Blume - gastfreundliche Höfe mit genügend Sanitäreinrichtungen und Zentralheizung für alle Räume.
- ☼☼ zwei Blumen - Zimmer mit Dusche und WC - angenehme Unterkünfte.
- ☼☼☼ drei Blumen - der Hof verfügt über zusätzliche Einrichtungen, besondere Erlebbarkeit am Hof.
- ☼☼☼☼ & ☼☼☼☼☼ vier / fünf Blumen - der Hof verfügt über hervorragende Einrichtungen, außerordentliche Erlebbarkeit am Hof.

Ortstaxe

Mit 1. Jänner 2014 wurde in Südtirol die Ortstaxe eingeführt.

Die Einnahmen aus der Ortstaxe werden für den Ausbau und die Erhaltung von Infrastrukturen und Dienstleistungen, sowie für die Organisation von kulturellen und sportlichen Veranstaltungen eingesetzt.

Die Ortstaxe wird pro Gast und Nächtigung von den Beherbergungsbetrieben eingehoben. Die Höhe dieser kommunalen Abgabe richtet sich nach der Kategorie des Betriebes. Kinder und Jugendliche unter 14 Jahren sind von der Abgabe befreit.

Die Ortstaxe wird bei Abreise fällig und ist in der Rechnung gesondert ausgewiesen.

La classificazione

da ★ a ★★★★★ come definito dagli standard internazionali. Per gli affittacamere privati / appartamenti la classificazione prevede invece una scala da ★ a ★★★★★ (soli) mentre alle aziende agrituristiche vengono assegnate da ☼ a ☼☼☼☼☼ (fiori).

★★★★ e ★★★★★ - la qualifica "Superior" è stata coniata per gli esercizi, appartamenti alle varie categorie, che si distinguono per il fatto di offrire una gamma di servizi particolarmente ricca.

- ★ un "sole" indica una sistemazione semplice ma ben curata per una vacanza più economica.
- ★★ due "soli" indicano una sistemazione piacevole in una fascia di prezzo media.
- ★★★ tre "soli" indicano una sistemazione confortevole con strutture aggiuntive che rendono ancora più piacevole il soggiorno.
- ★★★★ & ★★★★★ nella categoria quattro / cinque "soli" è previsto che la stanza o l'appartamento siano dotati di una spaziosa zona sanitaria separata e riscaldata con doccia o bagno e WC con acqua calda sempre disponibile.
- ☼ un fiore: sistemazione gradevole in agriturismo con servizi sanitari e riscaldamento centralizzato in tutti i locali.
- ☼☼ due fiori: camere con doccia e wc, alloggi confortevoli.
- ☼☼☼ tre fiori: l'agriturismo dispone di strutture aggiuntive e offre servizi particolari.
- ☼☼☼☼ & ☼☼☼☼☼ quattro / cinque fiori: il maso dispone di ottimi comfort, esperienze straordinarie al maso.

Tassa di soggiorno

A partire dal 1° gennaio 2014 è stata introdotta in Alto Adige, la tassa di soggiorno.

Le entrate generate dalla tassa di soggiorno verranno impiegate sia per la costruzione ed il mantenimento di infrastrutture e servizi, sia per l'organizzazione di manifestazioni sportive e culturali.

La tassa di soggiorno, determinata per persona e per pernottamento, viene riscossa dalle strutture ricettive. L'ammontare della suddetta tassa viene determinato in base alla categoria di struttura ricettiva. Sono esenti dalla tassa bambini ed adolescenti sotto i 14 anni.

La tassa di soggiorno viene pagata al momento della partenza ed è riportata sulla fattura del soggiorno in struttura, con una voce a sé stante.

The classification

goes from ★ to ★★★★★ stars, as defined by international standards. Private room boarders / apartments instead are classified using a scale from ★ to ★★★★★ (suns), while country inns are assigned ☼ to ☼☼☼☼☼ (daisies).

★★★★ and ★★★★★ - the term "Superior" has been coined to distinguish those establishments, of various categories, that offer an especially rich range of amenities.

- ★ one "sun" indicate simple but well services lodgings for very convenient holidays.
- ★★ two "suns" indicate comfortable lodgings in a middle price range.
- ★★★ three "suns" indicate comfortable lodgings with additional structures that make the holiday even more gratifying.
- ★★★★ & ★★★★★ in category four / five "suns", provision is made for the room or apartment to be equipped with a spacious separate and heated bathroom with shower or bath and WC, with hot water always available.
- ☼ one daisy - pleasant lodging in a country inn with bathroom and central heating in each room.
- ☼☼ two daisies - room with WC and shower, comfortable lodgings.
- ☼☼☼ three daisies - the country inn offers additional structures and special services.
- ☼☼☼☼ & ☼☼☼☼☼ four / five daisies - the maso (mountain farmhouse) is equipped with all modern amenities, live wonderful experiences at the mountain farmhouse.

Tourist tax

Beginning on 1st January 2014, a local tax had been introduced in South Tyrol.

The revenue from this local tax will be used for the expansion and maintenance of infrastructure and services, as well as for the organization of cultural and sports events.

The local tax will be levied at all lodging establishments, on a per-guest and per-overnight-stay basis. The amount is contingent upon the category of the establishment. Children and adolescents under 14 years of age are exempt from levy.

The local tax is payable upon departure and is listed separately on the invoice.

Piktogramme Infrastruktur/Ausstattung
Pittogrammi per infrastrutture e dotazioni
Pictograms for Infrastructure/Facilities

| | |
|--|-------------------------------------------------------------------------------------------------------------------------|
| | Einzelzimmer Camere singole Single rooms |
| | Doppelzimmer Camere doppie Double rooms |
| | Mehrbettzimmer Camere con più letti Shared rooms |
| | Appartements Appartamenti Apartments |
| | Suiten Suite Suites |
| | Allergiker Zimmer Camere per allergici Allergy-rooms |
| | Ferienhaus Casa vacanze Holiday house |
| | Zimmer oder Suite mit Verbindungstür Camere o suite con porta comunicante Rooms or suites with connecting door |
| | Übernachtung mit Frühstück Pernottamento con colazione Rate with breakfast |
| | Übernachtung mit Halbpension Pernottamento con mezza pensione Rate with half board |
| | Übernachtung mit ¾ Pension Pernottamento con pensione ¾ Rate with ¾ board |
| | Übernachtung mit Vollpension Pernottamento con pensione completa Rate with full board |
| | Frühstücksbuffet Colazione a buffet Breakfast buffet |
| | Diätküche / Vollwertküche Cucina dietetica/integrale Diet/whole-food cuisine |
| | Glutenfreie Küche Cucina senza glutine Gluten-free cuisine |
| | Laktosefreie Küche auf Anfrage Cucina senza lattosio su richiesta Lactose-free cuisine upon request |
| | Kochnische und/oder Küchenbenutzung Angolo cottura e/o uso cucina Kitchenette or use of kitchen |
| | Barrierefrei Senza barriere architettoniche Fully accessible |
| | Fahrstuhl Ascensore Elevator |
| | TV im Zimmer / Appartement TV in camera / appartamento TV in room / apartment |
| | Internetzugang Accesso a internet Internet access available |
| | WIFI |
| | Safe Cassetta di sicurezza Safe |
| | Föhn Fon Hairdryer |
| | Etagenbad/-dusche Bagno/doccia al piano Shared bath/shower |
| | Parkplatz Parcheggio Parking area |
| | Garage und/oder überdachter Parkplatz Garage e/o parcheggio coperto Garage or covered parking |
| | Ladestation E-Autos Stazione di ricarica auto elettriche Charging station for e-cars |
| | E-Ladestation für Fahrrad Stazione di ricarica per bici elettriche Charging station for e-bikes |
| | Kinderspielplatz Parco giochi Playground |
| | Kinderspielzimmer Stanza giochi per bambini Playroom for children |
| | Geschlossener Radabstellplatz Deposito bici / struttura chiusa Covered bike storage area |
| | Aufenthaltsraum Soggiorno Recreation room |
| | Konferenz-/ Seminarraum Sala conferenze/seminari Conference/seminar room |
| | Klimaanlage im Zimmer / Appartement Aria condizionata in camera / appartamento Air conditioning in room / apartment |
| | Bauernhof mit Viehzucht Maso con bestiame Farm with livestock breeding |
| | Bauernhof mit Obst- oder Weinbau Maso con frutticoltura o viticoltura Farm with fruit/wine cultivation |
| | Ruhige Lage Zona tranquilla Quiet location |
| | Minibar / Kühlschrank frigo fridge |
| | Bar / Getränkeservice Bar / servizio bevande Bar / beverage service |
| | Öffentlich zugängliches Restaurant Ristorante pubblico Restaurant open to the public |
| | Restaurant nur für Gäste Ristorante solo per ospiti Restaurant for guests only |
| | Klimahaus A CasaClima A ClimateHouse A certification |
| | Motorradfahrer willkommen Motociclisti benvenuti Motorcyclists welcome |

| | |
|--|-----------------------------------------------------------------------------------------------------------------------------------------------------|
| | Kreditkarte Carta di credito Credit cards accepted |
| | Hunde erlaubt Cani ammessi Dogs allowed |
| | Kinderbetreuung Assistenza ai bambini Childcare |
| | Öffentlicher Skibus / Skibushaltestelle beim Haus Servizio skibus / Fermata skibus presso la casa Ski bus service / Ski bus stop by the house |
| | Hotelbus |
| | Skidepot Deposito sci Ski room |
| | Kinderermäßigungen Riduzione per bambini Discount for children |
| | Skipassverkauf Vendita skipass Skipass purchase |

Piktogramme Freizeit, Sport, Wellness
Pittogrammi per tempo libero, sport e wellness
Pictograms for Recreation, Sports, Wellness

| | |
|--|---------------------------------------------------------------------------------------------------------------------------|
| | Freibad Piscina all'aperto Outdoor pool |
| | Hallenbad Piscina coperta Indoor pool |
| | Freier Eintritt ins öffentl. Freibad / Hallenbad Ingresso libero alla piscina pubblica Free admission to public pool |
| | Geführte Wanderung Escursione guidata Guided hike |
| | Fahrradverleih Noleggio biciclette Bicycle hire |
| | Geführte Radtour Tour in bici con guida Guided bike tour |
| | Skiverleih im Haus Noleggio sci in casa Ski rent in the house |
| | Fitnessraum Sala fitness Fitness room |
| | Reiten Equitazione Horseback riding |
| | Tennis |
| | Liegewiese oder Terrasse Prato o terrazza Sunbathing lawn or terrace |
| | Sauna |
| | Dampfbad Bagno turco Steam bath |
| | Whirlpool |
| | Massagen Massaggi Massages |
| | Beautyabteilung Trattamenti di bellezza Beauty treatments |

Piktogramme nur für Apartments
Pittogrammi solo per appartamenti
Pictograms for apartments only

| | |
|--|--------------------------------------------------------------------------------------------------|
| | Schlaf- und Wohnraum getrennt Camera e soggiorno separati Bedroom and living room separated |
| | Separate Küche Cucina separata Separate kitchen |
| | Endreinigung extra Pulizia finale extra Final cleaning extra |
| | Geschirrspüler Lavastoviglie Dishwasher |
| | Trockner Asciugatrice Drier |
| | Waschmaschine Lavatrice Washing machine |
| | Frühstück auf Anfrage Colazione su richiesta Breakfast upon request |
| | Brötchenservice Servizio pane fresco Baked goods delivered |
| | Geschirr vorhanden Stoviglie disponibili Tableware available |
| | Wäsche vorhanden Biancheria disponibile Laundry facilities |

Piktogramme Partnerbetriebe und Hotelgruppen
Pittogrammi per aziende partner e gruppi di hotel
Pictograms for Partners and Hotel Groups

| | |
|--|--------------------------------------------------------|
| | Golf Clubhotels |
| | Belvita Hotels |
| | Bike Hotels Südtirol / Alto Adige |
| | Familienhotels Südtirol / Alto Adige |
| | Historic Hotel of Europe |
| | Bett+Bike |
| | Südtirol Privat |
| | Bioland Südtirol / Alto Adige |
| | Urlaub auf dem Bauernhof Agriturismo Farm holidays |
| | MoHo Motorrad Hotels |
| | Sustainable Level 1 |
| | Sustainable Level 3 |

Geschäfte | Negozi | Shops

Apotheke | Farmacia | Pharmacy



Apotheke | Farmacia Pharmacy **Engel**

Piazza Floriani Platz 8
T +39 0474 496 566

Lebensmittelgeschäfte | Negozi Alimentari | Grocery



Market **Agstner Despar**
Gutes vom Bauern
Qualità dal contadino
Quality directly from the farmer
Via Hans von Perthalerstraße 7
T +39 0474 496 511
agstner.pp@rolmail.net
www.olang.com/agstner-market



Kaufhaus | Alimentari Department store **Engl**

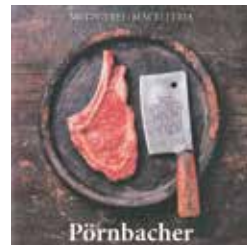
Lebensmittel, Tabakwaren, Zeitungen
Alimentari, tabacchi, giornali
Food, tobacco, newspaper

Piazza Peter Sigmayr Platz 18
T +39 0474 496 228
www.olang.com/market-engl



Metzgerei | Macelleria Butchery **Meatery**

Piazza Floriani Platz 1
T +39 0474 496 216
info@meatery.eu
www.meatery.eu



Metzgerei | Macelleria Butchery **Pörnbacher**

Via Hans von Perthalerstraße 12
T +39 0474 496 435
info@metzgerei-poernbacher.com
www.kronshop.com



Obstmarkt | Fruttivendolo Fruit market **Niederegger**

Piazza Peter Sigmayr Platz 9
T +39 0474 496 628
obstmarkt.niederegger@rolmail.net



Bäckerei | Panificio | Bakery **Trenker**

Piazza Peter Sigmayr Platz 1a
T +39 0474 497 089
info@trenker.com
www.trenker.com

Sport- & Bekleidungsgeschäfte | Negozi di sport & vestiti | Sports & clothing stores



Brugi - Sport More

Piazza Floriani Platz 17
T +39 0474 869 232
brugiolang@gmail.com



Schuhgeschäft | Calzature Shoe store **Mutschlechner**

Piazza Peter Sigmayr Platz 1b
T +39 0474 498 333
schuhemutschlechner@gmail.com



Sport **Sagmeister**

Via Krempe 1a
T +39 0474 496 535
info@sport-sagmeister.com
www.sport-sagmeister.com

For Rent - Contact
T +39 377 089 1927

Friseur | Parrucchiere | Barber



Damensalon | Salone donna
Barber **b.you**

Geiselsberger Straße /
Via Sorafurcia 7
T +39 347 074 37 32
babsi@salon-b-you.com

Sonstige | Diversi | Others



Raumausstattung
Decorazioni di interni
Interiors **Appenbichler**

Dorfstraße / Via del Borgo 7
T +39 0474 498 361
info@appenbichler.it
www.appenbichler.it



Holzschnitzer
Scultore in legno | Wood carver
Bachmann Konrad

Piazza Floriani Platz 17
T +39 0474 498 448
info@holzschnitzerei-bachmann.it
www.holzschnitzerei-bachmann.com



Kosmetik Lumina

Via Krempe 2
M +39 377 330 66 21
kosmetik.lumina@gmail.com



Baumschule | Vivaio piante
Tree nursery **Obojes**

Bahnhofstraße / Via Stazione 6
T +39 0474 496 184
info@obojes.it
www.obojes.it



Pedevilla S.
Home & Textiles

Simon Pedevilla
Piazza Floriani Platz 15F
M +39 347 270 81 78
M +39 340 621 36 37
pedevilla@home-textiles.it
www.home-textiles.it



PunktCH
Online Marketing

Rodelbahnweg /
Via dello Slittino 1
home@tirol.ch
www.tirol.ch



Silvia's Beautysalon

Kirchgasse / Vicolo della Chiesa 1b
Oberolang / Valdaora di Sopra
M +39 377 370 94 92
silviasbeautysalon@hotmail.com



Bergführer
Guida alpina | Guide
Manuel Baumgartner

M +39 347 931 96 78
info@dolotool.com
www.dolotool.com



Bergführer
Guida alpina | Guide
Toni Obojes

M +39 348 826 62 10
toni@obojes.it
www.friends-of-dolomites.com



Topschrift Werbebeschriftungen
Publicità | Advertising

J.-G.-Mahl-Straße / Via J.-G.-Mahl 15
Bruneck / Brunico
T +39 0474 476 211
info@topschrift.it
www.topschrift.it



Raiffeisenkasse
Cassa Rurale | Bank

Bahnhofstraße / Via Stazione 1c
T +39 0474 496 485
www.raiffeisen.it

Handwerker | Artigiani | Tradespeople

Hiermit möchten wir uns bei allen Handwerkern für die tatkräftige Unterstützung bedanken!
Un sentito grazie per il sostegno! / Thank you for the support!



Heizung und Sanitäre
EDUARD JUD
Kirchgasse 2A 39030 Olang
Tel. 0474 498117 Mobil 335 207462
eduard.jud@cmail.it

Heizung und Sanitäre
Idraulico | Hydraulics
Jud Eduard
Kirchgasse / Vicolo della Chiesa 2A
T +39 0474 498 117
info@eduard-jud.com



ELEKTRO
WINKLER


Elektro Winkler GmbH
Bahnhofstraße / Via Stazione 25A
T +39 0474 497 294
info@elektro-winkler.it
www.elektro-winkler.it



JUD & PARTNER
Energy & Consulting
www.jud.bz 39030 Olang info@jud.bz

Planungsbüro:
Heizung / Sanitär / Brandschutz / Klimatechnik
Beratung & Energieförderanträgen

Jud & Partner -
Energy & Consulting
Dorfstraße / Via del Borgo 7
T +39 0474 496 738
info@jud.bz
www.jud.bz



plaikner
BUILDING AUTOMATION & SECURITY

Plaikner
Building Automation & Security
Greitweg / Via Greit 5
M+ 349 505 75 83
info@plaikner-bz.it



rollmark
ROLLLÄDEN - SCHONNENSCHUTZ

Rollmark GmbH - Rollläden
Avvolgibili | Roller blind
Industriezone / Zona industriale 8
T +39 0474 496 049
info@rollmark.it
www.rollmark.it



AMHOF
Günther
SCHLOSSEREI

Bahnhofstr. 26 - 39030 Olang
Tel. 0474 496 487 - Mobil 348 5236015
info@amhof-schlosserei.com - www.amhof-schlosserei.com

Schlosserei | Officina del fabbro
Metalworking shop
Amhof
Bahnhofstraße / Via Stazione 26
M +39 348 523 60 15
info@amhof-schlosserei.com
www.amhof-schlosserei.com



untergassmair.com
Heizung und Sanitäre



Untergassmair GmbH -
Heizung und Sanitäre
Idraulico | Hydraulics
Industriezone / Zona industriale 10
T +39 0474 496 340
info@untergassmair.it
www.untergassmair.it



ZIMMEREI
DAVERDA
ZIMMERN MIT HERZ & VERSTAND.
Bahnhofstraße 22 - 39030 Olang (BZ) Tel.: 348-8423451 - Fax: 0474-971199
www.zimmerer-daverda.com

Zimmerer
Carpenteria | Carpentry
Daverda
Bahnhofstraße / Via Stazione 22
M +39 348 842 34 51
info@zimmerer-daverda.com
www.zimmerer-daverda.com



ZMO GmbH

Zimmerer
Carpenteria | Carpentry
ZMO GmbH
Bahnhofstraße / Via Stazione 17A
T +39 0474 592 024
info@zmo.bz
www.zimmerer-mutschlechner.it

Hofladen | Botteghe del maso | Farm shop's



Hofladen | Bottega del maso
Farm shop **Pittola**
Rodelbahnweg / Via dello Slittino 11
M +39 327 432 13 36
info@pittola.com
www.pittola.com

Autowerkstatt & Taxi | Officina e taxi | Garage & taxi



Autowerkstätte | Officina Auto Sepp

Bahnhofstraße / Via Stazione 25c
M +39 348 444 95 11
info@autosepp.it
www.autosepp.it



Taxi Holzer Josef

Rasen / Rasun
M +39 348 727 95 09
holzerj@rolmail.net
www.auto-rasenanholz.it



Nonstop GmbH

Kerlastraße / Via Kerla 1C
M +39 340 238 34 50
info@taxi-nonstop.it
www.taxi-nonstop.it

Reiterhof | Maneggio | Riding Stable



Reitstall Tharerhof

Via Brechelweg 6
M +39 348 473 14 92
steuerer.anna@yahoo.com
www.landhotel.it



Reitschule Tolderhof

Wiesenweg / Via dei Prati 14
M +39 334 620 11 80
info@hotelpost-tolderhof.com
www.hotelpost-tolderhof.com
Ruhetag / giorno di riposo / day off:
Sonntag / Domenica / Sunday

Radverleih | Noleggio bici | Bike rental



Papin Sport Oberolang Alpnhotel Keil

Via Hans von Perthalerstraße 20
T +39 0474 496 716
info@papinsport.com
www.papinsport.com



Rent and Go Bike Rent

Piazza Floriani Platz 15a
T +39 0474 498 038
info@sportrent.it
www.sportrent.it



Skiverleih | Noleggio sci | Ski rental



CIMA School Rental & Service

Piazza Floriani Platz 17
Mitterolang / Valdaora di Mezzo
T +39 0474 497 190
info@cimaschool.com
www.cimaschool.com



Kronschoool Rental

Mitterolang / Valdaora di Mezzo &
Gipfel Kronplatz
Cima Plan de Coronas
T +39 0474 592 091
info@kronschoool.com
www.kronschoool.com



rent and go
SPORT YOURSELF

Rent and Go Rental, Depot & Service

Gassl 21
T +39 0474 592 111
info@sportrent.it
www.sportrent.it



Skisalon

Rental, Depot & Service

Gassl 23 - Talstation
Stazione a Valle / Valley station
T +39 0474 592 106
info@skisalon.it
www.skisalon.it

Ski - & Snowboardschool



CIMA School

Mitterolang / Valdaora di Mezzo
Gipfel Kronplatz /
Cima Plan de Coronas
T +39 0474 497 190
info@cimaschool.com
www.cimaschool.com



Kronschoool

Gassl 23
T +39 0474 592 091
info@kronschoool.com
www.kronschoool.com

Restaurants | Ristoranti

Oberolang | Valdaora di Sopra



Jausenstation | Locanda Snack bar Oberriedl

Via Riedl 2
T +39 0474 498 088
info@oberriedlhof.it
www.oberriedlhof.it



Restaurant | Ristorante Pizzeria Panorama

Rodelbahnweg / Via dello Slittino 3
T +39 0474 498 393



Hotel Rainegg

Via Aue 14
T +39 0474 496 084
info@hotelrainegg.it
www.hotelrainegg.it

Mitterolang | Valdaora di Mezzo



Restaurant | Ristorante
Pizzeria Christl

Via Kerla Straße 1a
T +39 0474 498 212
info@christl.bz



Restaurant | Ristorante
Pizzeria Friedheim

Via Hans-von-Perthaler Straße 10
T +39 0474 831 091



Restaurant | Ristorante
Lamp

Bahnhofstraße / Via Stazione 9
T +39 0474 773 370



Minigrill Floriani

Piazza Floriani Platz 8
T +39 0474 498 207

Geiselsberg | Sorafurcia



Restaurant | Ristorante
Alprès Kronplatz

nur im Winter geöffnet / aperto
solo d'inverno / only open in winter

Via Prackenweg 6A
M +39 371 610 78 88
info@alpres.it, www.alpres.it



Restaurant **Gassl**

nur im Winter geöffnet / aperto
solo d'inverno / only open in winter

Talstation / Stazione a Valle /
Valley station Gassl
T +39 0474 592 087
info@gassl.bz, www.gassl.bz



Rifugio | Hut **Lorenzihütte**

Via Egger Weg 22
T +39 0474 592 100
michi.lorenzi@gmail.com
www.olang.com/lorenzihuette



Malga | Hut
Niederegger Hütte

nur im Winter geöffnet / aperto
solo d'inverno / only open in winter

Talabfahrt Olang / Discesa a valle
Valdaora / Valley run Valdaora
T +39 0474 592 029
www.niedereggerhof.it



Malga | Hut
Oberegger Alm

Via Egger Weg 21
M +39 347 522 01 22
info@obereggeralm.com
www.obereggeralm.com



Hotel **Olangerrhof**

Via Prackenweg 27
T +39 0474 496 193
info@olangerhof.com
www.olangerhof.com

Bar | Cafè | Pub

Oberolang | Valdaora di Sopra



Messnerwirt

Kirchgasse / Vicolo della Chiesa 7
T +39 0474 496 178
info@messnerwirt.com
www.messnerwirt.com



Cafè Bar Pfiff

Dorfstraße / Via del Borgo 7
T +39 348 725 85 15

Mitterolang | Valdaora di Mezzo



Cafè Bistro Bacher

Piazza Peter Sigmayr Platz 5
T +39 0474 496 699
cafebistro.bacher@rolmail.net



Bar Krempe

Via Krempe 1d
M +39 349 449 40 96



Parc Cafè MarLen

Via Kerla Straße 2a
M +39 339 569 20 20
parccafe.marlen@gmail.com



Cocktailbar Tolderclub

St. Ägidius-Weg / Via S. Egidio
M +39 348 228 32 27
info@tolderclub.com

nur im Sommer geöffnet /
aperto solo d'estate /
only open in summer hinzufügen



Villa Colli Lounge

Piazza Peter Sigmayr Platz 13
T +39 0474 592 091
info@colli-lounge.com
www.colli-lounge.com

Niederolang | Valdaora di Sotto



Sunset - Bar & Swim

Bahnofstraße / Via Stazione 29
M +39 377 307 14 92
sunsetolang@gmail.com

nur im Sommer geöffnet /
aperto solo d'estate /
only open in summer hinzufügen

Geiselsberg | Sorafurcia



Bar Gassl

Talstation / Stazione a Valle /
Valley station Gassl
T +39 0474 592 087
info@gassl.bz, www.gassl.bz

Sommer und Winter geöffnet /
aperto d'estate e d'inverno /
open in summer and winter

Skihütten | Rifugi | Après Ski



Restaurant | Ristorante Après Ski **Alprès Kronplatz**

Talstation / Stazione a valle /
Valley station **Alpen**
M +39 371 610 78 88
info@alpres.it
www.alpres.it



Après Ski „**Gassl**“

Talstation Olang
Stazione a valle Valdaora
Valley station Valdaora
M +39 348 228 32 27
info@gassl.bz
www.gassl.bz



Rifugio | Hut **Geiselsbergerhütte**

Mittelstation Olang /
Stazione intermedia Valdaora /
Middle station Valdaora
M +39 348 440 96 45



Restaurant | Ristorante **Kron**

Bergstation Olang II /
Stazione a monte Valdaora II /
Mountain station Valdaora II
T +39 0474 548 414
gastro@kronplatz.group



Rifugio | Hut **Lorenzihütte**

Talstation / Stazione a valle /
Valley station **Arndt**
T +39 0474 592 100
michi.lorenzi@gmail.com
www.olang.com/lorenzihutte



Malga | Hut **Niederegger Hütte**

Talabfahrt Olang /
Discesa a valle Valdaora /
Valley run Valdaora
T +39 0474 592 029
www.niedereggerhof.it



Malga | Hut **Oberegger Alm**

Talabfahrt Olang /
Discesa a valle Valdaora /
Valley run Valdaora
M +39 347 522 01 22
info@obereggeralm.com
www.obereggeralm.com



Almhütten | Malghe | Mountain huts



Malga | Hut Angerer Alm

> Restaurant | Ristorante Panorama
Oberolang / Valdaora di Sopra
Ⓞ 22
⌚ ¾ h
M +39 333 994 74 77
info@angereralm.it
www.angereralm.it



Malga | Hut Brunst Alm

> Via Aue,
Oberolang / Valdaora di Sopra
Ⓞ 20b oder / o / or 20
⌚ 2½ h
M +39 371 162 30 20



Malga | Hut Lanzwiesen Alm

> Restaurant | Ristorante Panorama
Oberolang / Valdaora di Sopra
Ⓞ 22 + 6 ⌚ 2 h
> Bad Bergfall / Bagni di Pervalle
Ⓞ 6b ⌚ 1¾ h
M +39 340 218 83 57



Rifugio | Hut Lorenzihütte

> Geiselsberg / Sorafurcia
Ⓞ 3
⌚ ¾ h
T +39 0472 592 100
michi.lorenzi@gmail.com
www.olang.com/lorenzihutte



Malga | Hut Oberegger Alm

> Geiselsberg / Sorafurcia
Ⓞ 3 ⌚ ½ h
> Rifugio Marchner Hütte,
Geiselsberg / Sorafurcia
Ⓞ 4a ⌚ ½ h
M +39 347 522 01 22
info@obereggeralm.com
www.obereggeralm.com

> Ausgangspunkt | punto di ritrovo | starting point
Ⓞ Wegnummerierung | segnaletica | path number
⌚ Gehzeit | tempo previsto | expected time



Nichtmitglieder · Non membri · Non-members

| | | | |
|---------------------------|---------------------------------------------------------------------------------|---------------------|--------------------|
| Alpine View | Gassl 5, 39030 Geiselsberg / Sorafurcia | M +39 351 614 68 11 | IT021106B4VQFIDJF2 |
| Bärenhotel | Furkelstraße / Via Furcia 11, 39030 Geiselsberg / Sorafurcia | T +39 0474 592 001 | IT021106A1MMXUNJNF |
| Chalet Alpen | Via Prackenberg 8, 39030 Geiselsberg / Sorafurcia | M +39 347 275 21 80 | |
| Chalet Hubertus | Via Prackenberg 20, 39030 Geiselsberg / Sorafurcia | T +39 0474 592 104 | IT021106B4NHUJJ7PI |
| Eledda | Geiselsberger Straße / Via Sorafurcia 12, 39030 Mitterolang / Valdaora di Mezzo | M +39 347 875 02 82 | IT021106B4VQV4N95S |
| Haus Wendlinger | Via Hans von Perthalerstraße 2, 39030 Mitterolang / Valdaora di Mezzo | T +39 0474 498 013 | IT021106B5X8RS2M7S |
| Jud Markus | Via Feldweg 2, 39030 Niederolang / Valdaora di Sotto | T +39 0474 496 610 | IT021106B5QOGK28F8 |
| Kondominium TRIO 1 | Durnbrunnweg / Via Durnbrunn 5, 39030 Mitterolang / Valdora di Mezzo | M +39 348 740 20 28 | IT021106C2K9GDSDRD |
| Kondominium TRIO 2 | Durnbrunnweg / Via Durnbrunn 5, 39030 Mitterolang / Valdora di Mezzo | M +39 348 354 86 78 | |
| Apartment Nonstop | Via Kerla Straße 1C, Mitterolang / Valdaora di Mezzo | M +39 340 238 34 50 | IT021106B42R5LWIN |
| Piotto Roberta | Pfarrstraße / Via Parocchia 8, 39030 Niederolang / Valdora di Sotto | M +39 328 867 93 60 | IT021106B4TS7IGV5D |
| Raffl Elisabeth | Via Palmpeinten 10, Mitterolang / Valdaora di Mezzo | T +39 0474 496 420 | |
| Apartment Seir | Via Oberrain 6, Niederolang / Valdaora di Sotto | T +39 0471 836 227 | IT021106B4JJXBPI36 |
| Staggl Gerhard | Via Prackenberg 17, Geiselsberg / Sorafurcia | M +39 348 741 97 70 | IT021106B4WFIYMG1 |
| Wetterkreuzpichl | Via Prackenberg 5, Geiselsberg / Sorafurcia | M +39 335 571 12 41 | IT021106B4NPW723Q4 |
| Zangobbo Daniela | Via Steinwallweg 15, Mitterolang / Valdaora di Mezzo | M +32 485 890 294 | |





HÜTTEN & ALMEN · BAITE E MALGHE · HUTS & PASTURES

- | | |
|---------------------------------|------------------------------------|
| 01 ALPRES RESTAURANT | 06 BAITA GEISELBERGER HÜTTE |
| 02 GASSL | 07 KRON RESTAURANT |
| 03 BAITA NIDEREGER HÜTTE | 08 MALGA BRUNST ALM |
| 04 BAITA OBEREGER HÜTTE | 09 MALGA ANGERER ALM |
| 05 BAITA LORENZI HÜTTE | 10 MALGA LANZWIESEN ALM |

Raiffeisen MIEH WERT LEBEN
 Raiffeisenkasse Bruneck
 Cassa Raiffeisen di Brunico

WINTERWANDERTOUREN · ESCURSIONI INVERNALI · WINTER HIKING TRAILS

- | | | | | |
|----------------------------------------|---------------------------------------------------------------------------------|---------------------------------------|--------------------------------------------------------------------------|----------------------------------------|
| 01 SEEFELDER 1,7 km (30 min) | 02 OBERLANG/VALDAORA DI SOPRA > WELSBERG/MONGUELFO 5,6 km (1h 50 min) | 03 SALLA 3,8 km (1h 30 min) | 04 RUNDWEG OBERLANG/SENTIERO VALDAORA DI SOPRA 2,3 km (50 min) | 05 MÜHLENWEG 1,1 km (15 min) |
|----------------------------------------|---------------------------------------------------------------------------------|---------------------------------------|--------------------------------------------------------------------------|----------------------------------------|



- SKITOURENWEG
PERCORSO DI SCI ALPINISMO
SKI TOURING TRAIL
- EISLAUFPLATZ
PISTA DA PATTINAGGIO
ICE SKATING
- SCHNEESCHUHWANDERWEG
PERCORSO PER CIASPOLATA
SNOWSHOE HIKING TRAIL
- RODELBAHN
PISTA DA SLITTINO
SLEDDING SLOPE
- DOLOMITES LIGHT ZOO
- PARKPLATZ
PARCHEGGIO
PARKING
- TOURISMUSBÜRO
UFFICIO TURISTICO
TOURIST OFFICE
- BANCOMAT
- POSTAMT
UFFICIO POSTALE
POST OFFICE
- ZUGBAHNHOF
STAZIONE FERROVIARIA
TRAIN STATION
- SKISCHULE
SCUOLA SCI
SKI SCHOOL
- FAHRZEUGE LADESTATION
STAZIONE RICARICA AUTOVETTURE
CAR CHARGING STATION
- SKI VERLEIH
NOLEGGIO SCI
SKI RENTAL
- CITYBUS NR. 435.1 & 435.2
- CITYBUS & SKIBUS NR. 21 & 22
- SKIBUS NR. 21 & 22
- GESCHLOSSEN
CHIUSO
CLOSED

- 06 GASSL
1,0 km (20 min)
- 07 PANORAMAWEG/SENTIERO PANORAMICO
2,7 km (1h)
- 08 STEINMEILE/SENTIERO DELLE PIETRE
0,9 km (20 min)
- 09 HÜTTENWEG/SENTIERO DELLE MALGHE
3,0 km (1h 20 min)
- 10 PRACKENDORF
4,5 km (2h)

DOLOMITES UNESCO



SEEKOFEL
CRODA DEL BECCO
2.810 m

KASERKOPF
PUNTA CASERA
2.414 m

HOCHALPENKOPF
COL ALT
2.542 m

MAURERKOPF
MUNT DE MUR
2.567 m

FLATSCHKOFEL
COL VALACIA
2.409 m

PRAGSER WILDSEE
LAGO DI BRAIES

LEVEL B

Malga Brunst Alm
1.900 m

Sentiero Almsteig
2.000 m

Malga Lanzwiesen Alm
1.820 m

20
20B
2 h 30 min

Malga Angerer Alm
1.400 m

6

Malga Brunst Alm: 2 h
Pragser Wildsee / Lago di Braies: 6 h

VIEW POINT

Grillstelle
Zona barbecue

KRON ARC ADVENTURE PARC

22
45 min

TRAMPOLINE

Malga Angerer Alm: 45 min
Lanzwiese: 2 h 30 min

MTB
SKILL AREA

KINDERWELT
MONDO BIMBI
KIDS WORLD

PUMP TRACK

KIDS AREA
PANORAMA

NACH WELSBERG
PER MONGUELFO

Olang Stausee
Diga di Valdaora

NACH TOBLACH
PER DOBBIACO

GOSTE

OBERLANG
VALDAORA DI SOPRA

NACH TAISTEN
PER TESIDO

INDUSTRIEZONE
ZONA INDUSTRIALE

NACH RASEN ANTHOLZ/PER RASUN ANTERSELVA
ANTHOLZERSEE/LAGODI ANTERSELVA

EDMUNDNAGLER
DESIGN

WORLD HERITAGE



NACH BRUNECK
PER BRUNICO
▽

NACH REISCHACH
PER RISSONE
▽



TOURISMUSVEREIN | ASSOCIAZIONE TURISTICA | TOURIST INFO
OLANG/VALDAORA

Piazza Floriani Platz 19 | I-39030 Olang/Valdaora
T +39 0474 496 277 | info@olang.com

OLANG.COM | KRONPLATZ.COM

